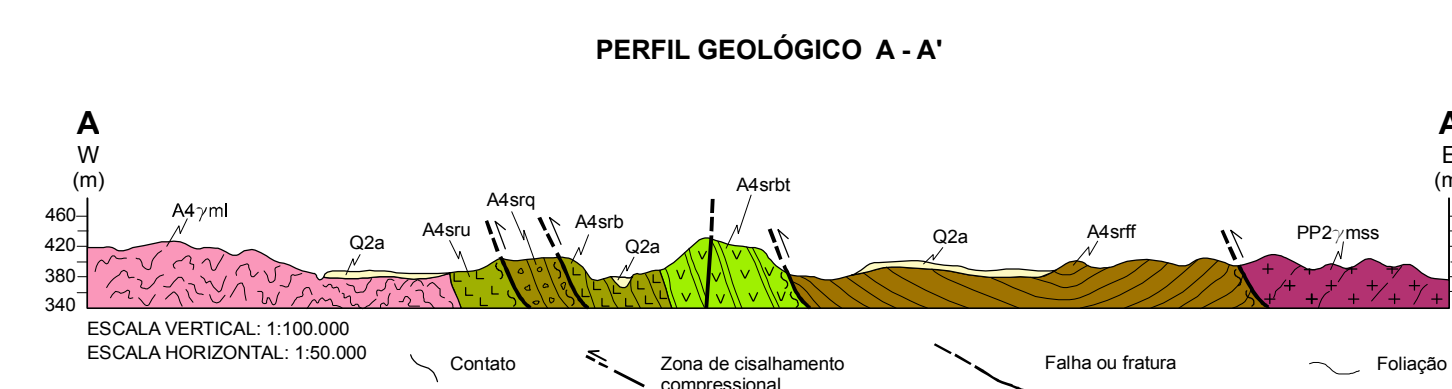
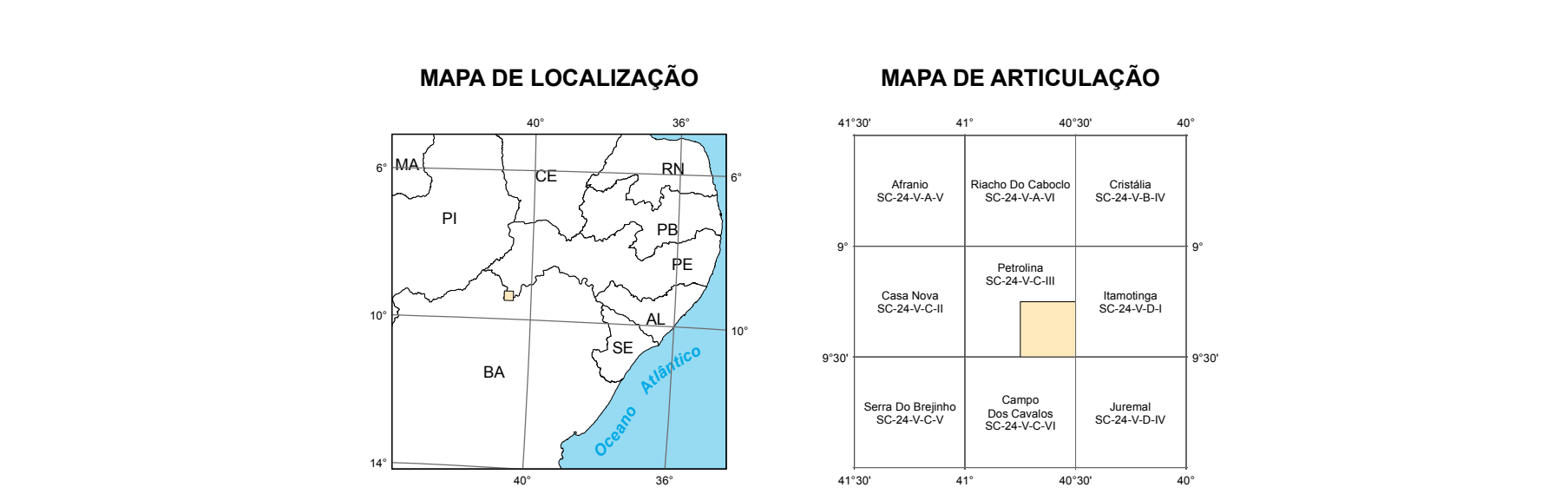
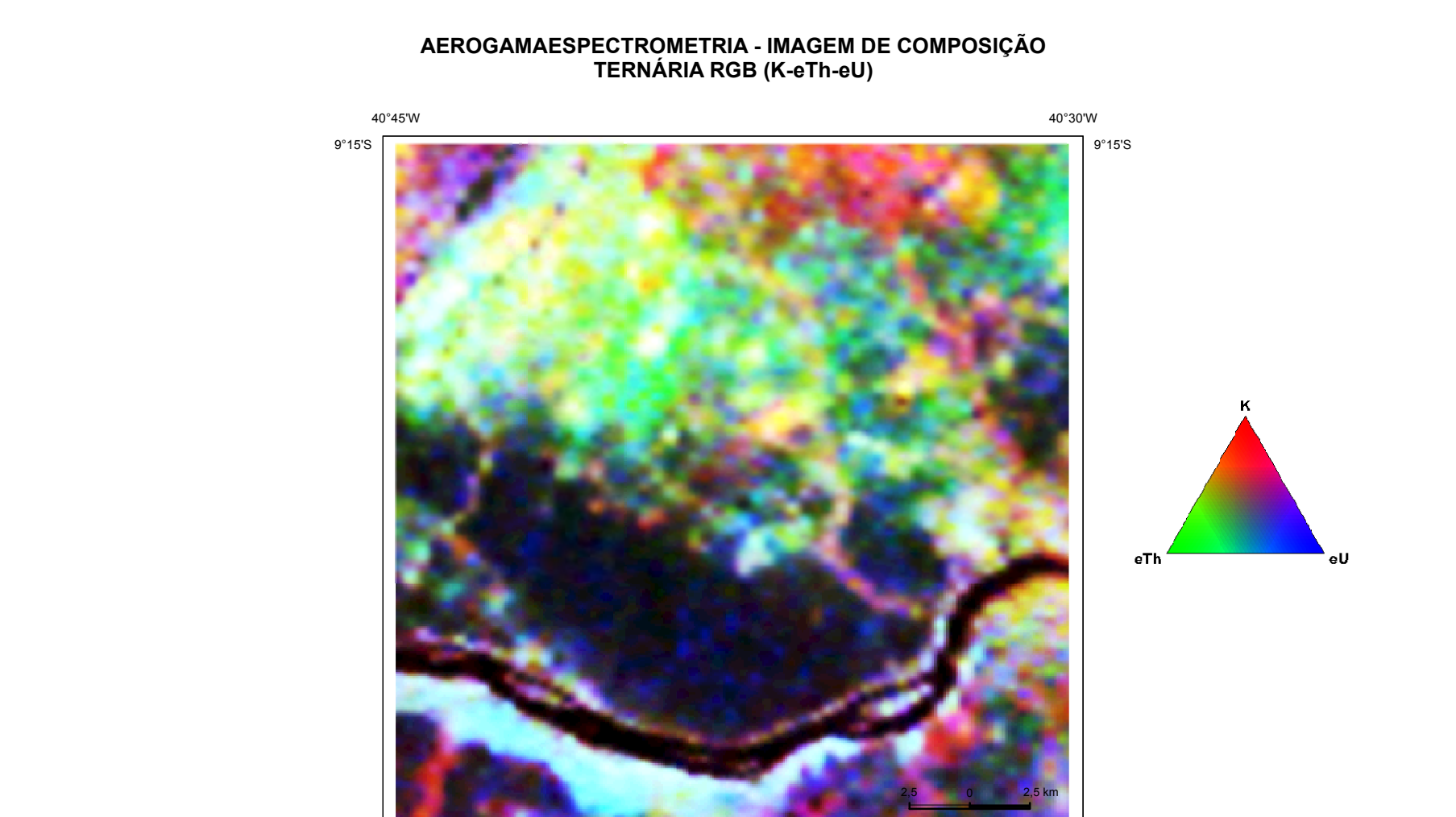
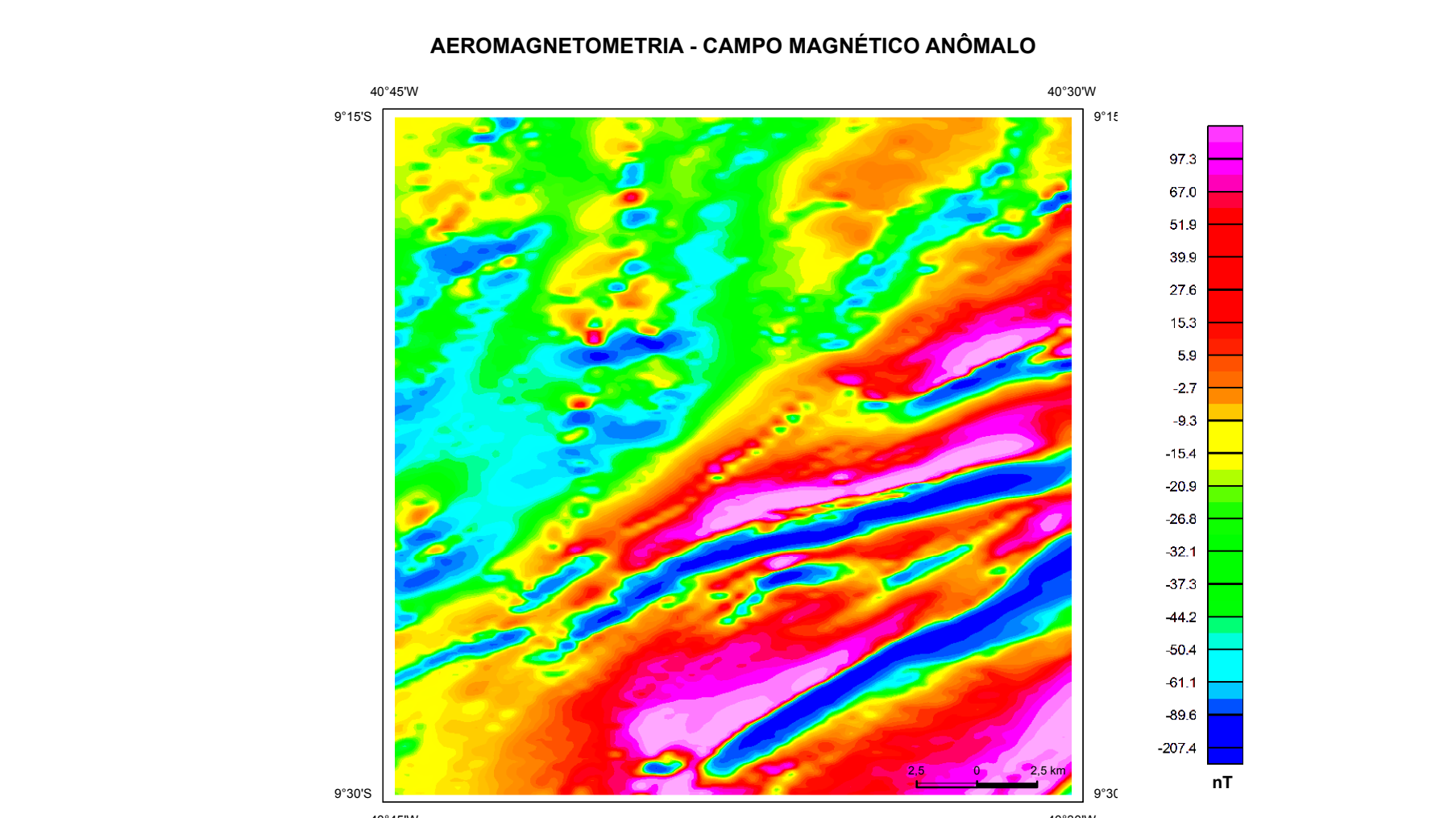


Legend for geological units and rock types, including CENOZOICO, MESOPROTEROZOICO, and NEOPROTEROZOICO units.



RELACIONES TECTONO-ESTRATIGRAFICAS: A stratigraphic correlation chart showing the relationship between geological units across different time periods.

UNIDADES LITOESTRATIGRAFICAS: A detailed lithostratigraphic column listing units such as Q2a, Q2b, Q1a, N1292, PP3, PP23, A4, A3, A2, A1, and A0, along with their descriptions.

CONVENÇÕES GEOLÓGICAS and CONVENÇÕES CARTOGRÁFICAS: Symbols and conventions for geological features and cartographic elements used on the map.

Textual information including project details, authorship, and contact information for the CPRM (Serviço Geológico do Brasil).