

RELAÇÕES TECTONO-ESTRATIGRÁFICAS COBERTURAS SUPERFICIAIS

Table with columns: ERA, PERÍODO, IDADE (Ma), CONTINENTE. Rows include Cenozoico (Quaternário, Neógeno) and Paleoproterozoico (Cromiáceo, Sideriano).

Table showing geological periods from Cambrian to Siderian, with corresponding geological units and their descriptions.

UNIDADES LITOESTRATIGRÁFICAS

Table of lithostratigraphic units categorized by geological period: Quaternário, Paleógeno-Neógeno, Paleoproterozoico, and Neoproterozoico.

CONVENÇÕES CARTOGRÁFICAS

Table of cartographic conventions including geological features like faults, folds, and tectonic zones, as well as urban areas and roads.

Text describing the geological base and the project's objectives, including the role of the Geological and Mineral Resources Directorate.

Text regarding the cartographic base, mentioning the use of digital maps and the SUDENE project.

Text describing the geological base, detailing the use of field data and geological maps for the study.

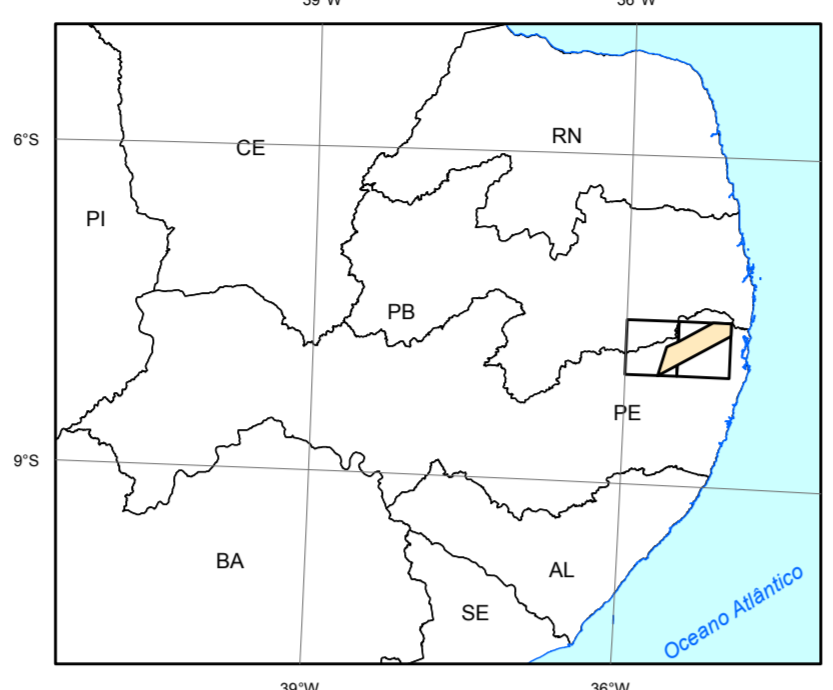
Credits section listing the authors and technical staff involved in the project, including the project manager and geologists.

Technical coordinates for the regional and national scales, including UTM and UTM coordinates.

Bibliographic information for the project, including the title, authors, and publication details.

Legal notice regarding the use of the map, stating that it is a public domain work and that the user assumes responsibility for its use.

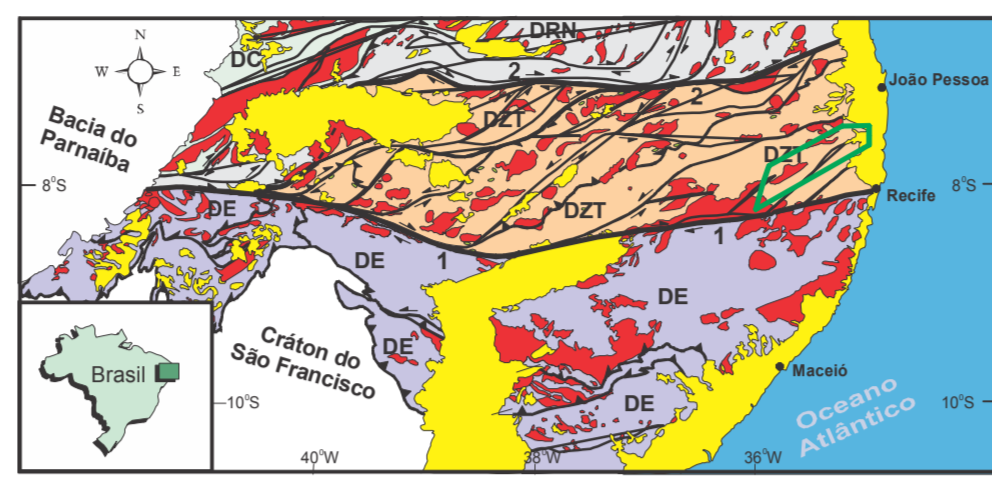
LOCALIZAÇÃO DA ÁREA



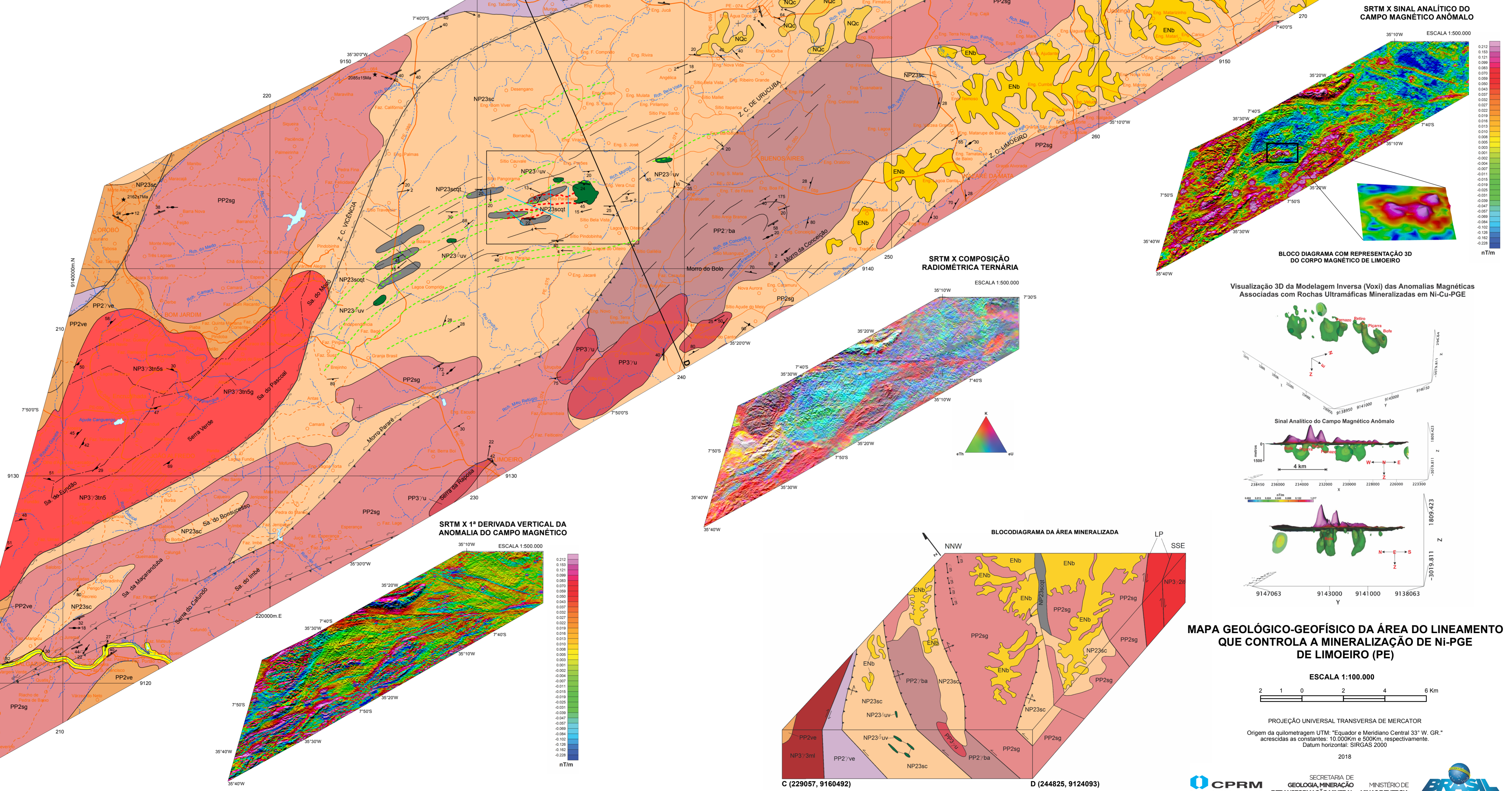
ARTICULAÇÃO DAS FOLHAS

Table showing the arrangement of geological sheets, with columns for sheet names and their corresponding coordinates.

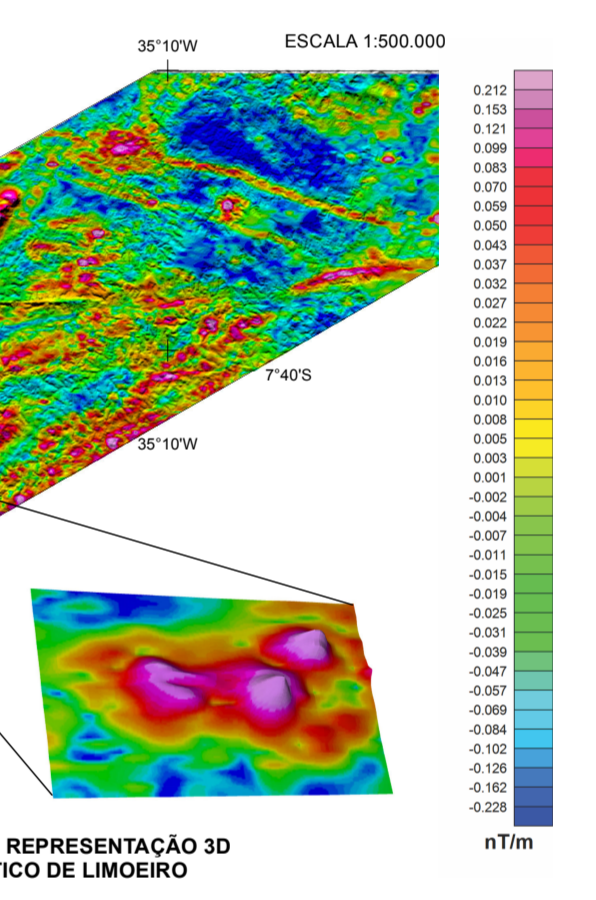
ENCARTE TECTÔNICO



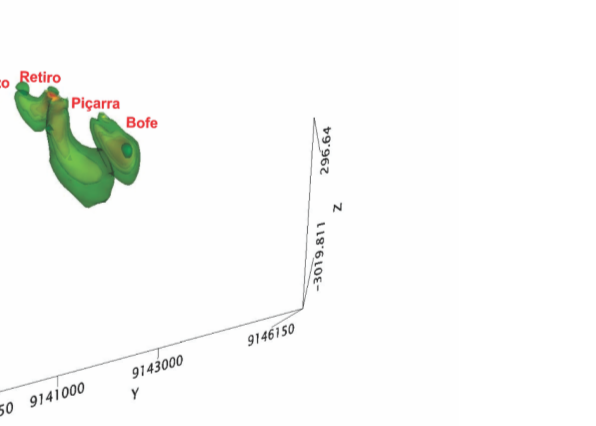
Legend for the tectonic map, defining symbols for faults, plate boundaries, and domains.



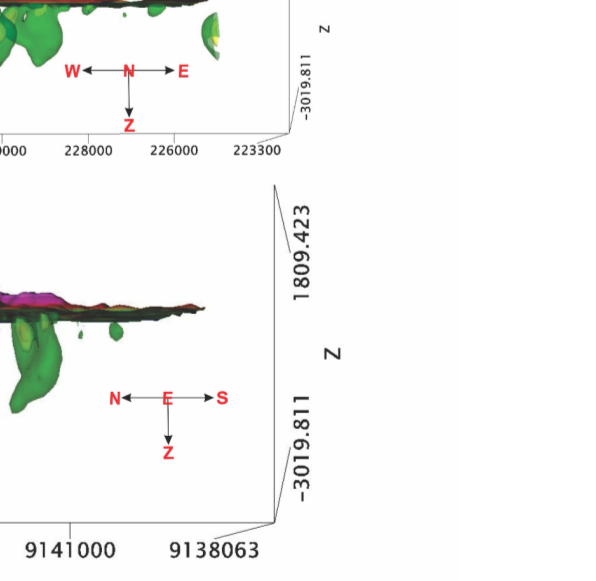
SRTM X SINAL ANALÍTICO DO CAMPO MAGNÉTICO ANÔMALO



BLOCOGRAMA COM REPRESENTAÇÃO 3D DO CORPO MAGNÉTICO DE LIMOEIRO



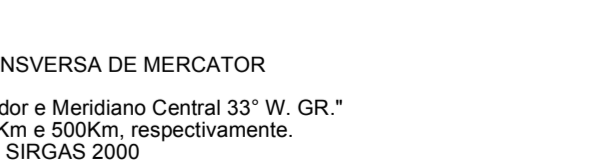
Visualização 3D das Rochas Inversas (Vox) das Anomalias Magnéticas Associadas com Modelos Ultramáficos Mineralizados em Ni-Cu-PGE



Sinal Analítico do Campo Magnético Anômalo



Sinal Analítico do Campo Magnético Anômalo



Sinal Analítico do Campo Magnético Anômalo

Sinal Analítico do Campo Magnético Anômalo

MAPA GEOLÓGICO-GEOFÍSICO DA ÁREA DO LINEAMENTO QUE CONTROLA A MINERALIZAÇÃO DE NI-PGE DE LIMOEIRO (PE)

