




CPRM Serviço Geológico do Brasil

RIO 2018  49°
CONGRESSO BRASILEIRO DE
GEOLOGIA



SERVIÇO GEOLÓGICO DO BRASIL – CPRM

Diretoria de Geologia e Mineração –
SUREG-Porto Alegre

REVISÃO ESTRATIGRÁFICA DO BATÓLITO PELOTAS

*Jorge Henrique Laux,
Lucy Takehara,
José Luciano Stropker,
Carlos Augusto Provenzano,
Oscar L. Bertoldo Scherer*



SECRETARIA DE
GEOLOGIA, MINERAÇÃO
E TRANSFORMAÇÃO MINERAL

MINISTÉRIO DE
MINAS E ENERGIA

GOVERNO
FEDERAL

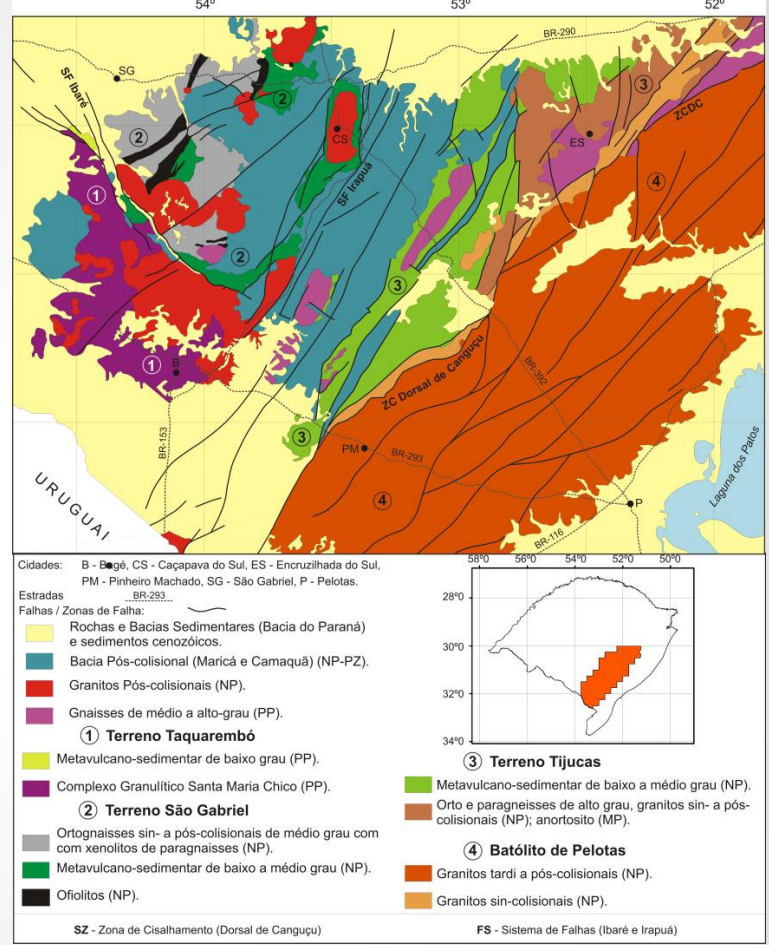
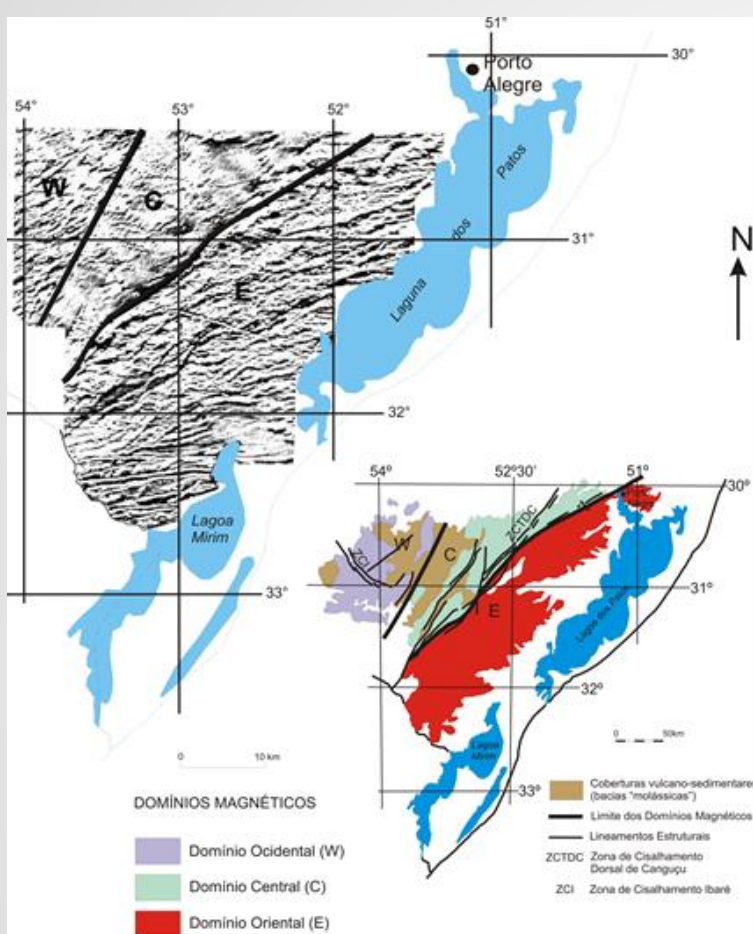
Dois Projetos de Integração Geológico-Geofísico da CPRM

- Batólito Pelotas-Terreno Tijucas
 - 1:500.000
- Sudoeste do RS
 - 6 Folhas 1:100.000

OBS: Mapas já disponíveis na página GEOSGB (CPRM), relatórios em fase final de revisão externa

Mapas foram construídos

- Revisão da Bibliografia
- Geofísica
 - Aeromagnetometria
 - Aerogamaespectrometria
 - Gravimetria Terrestre
 - Levantamento completo do ESRGS (Complemento)
- Perfis Regionais



Usava como base

Primeiros resultados U-Pb

Folhas CPRM

-1:250.000

-Cachoeira do Sul

-Porto Alegre

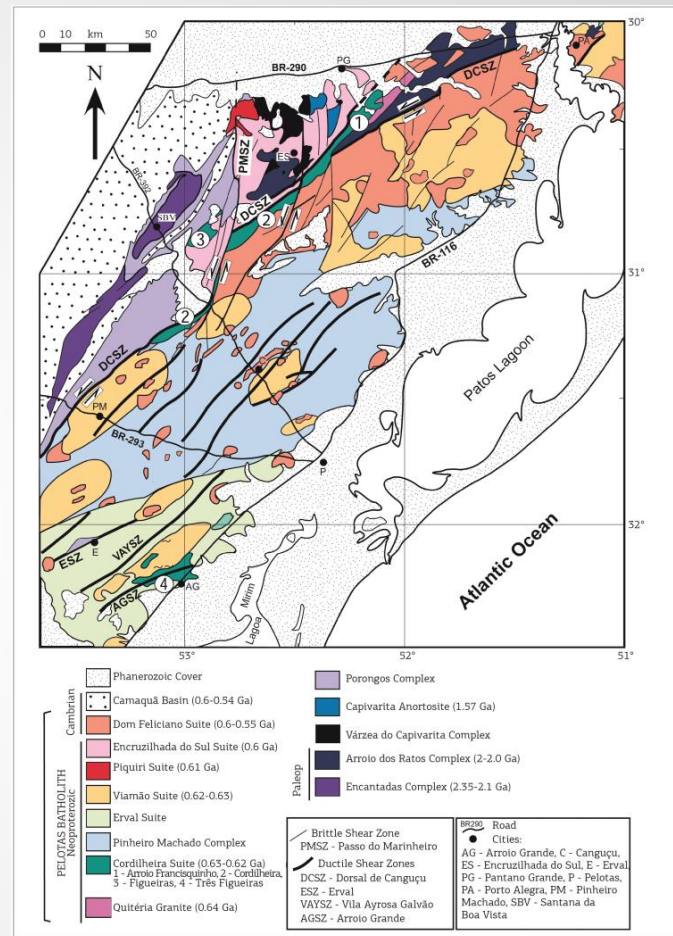
-Pedro Osório

1:100.000

-Piratini

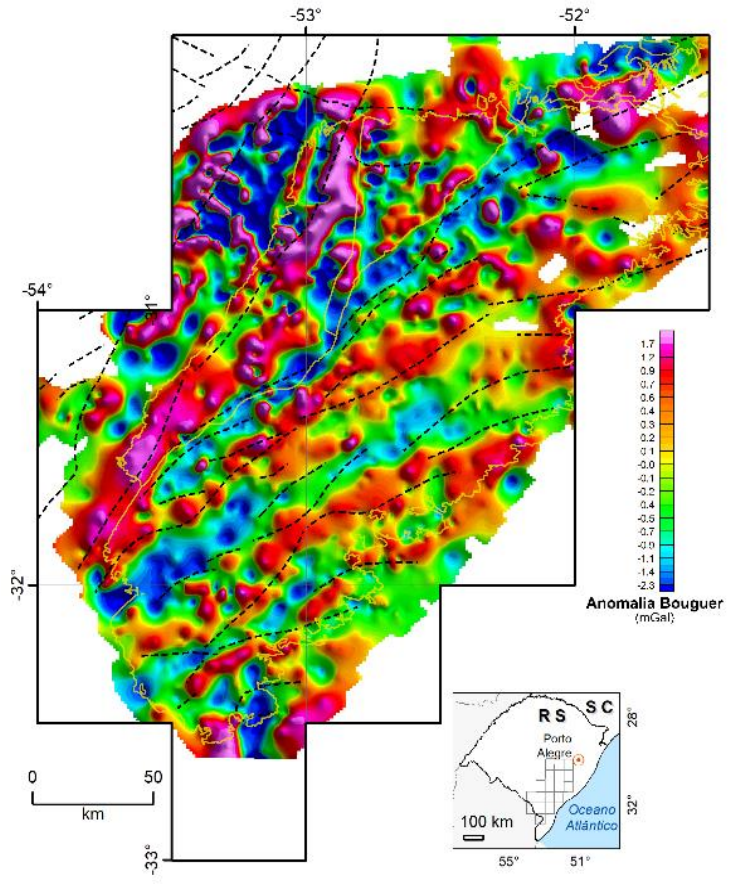
Fragoso-Cesar *et al.* 1986

Philipp, 1989

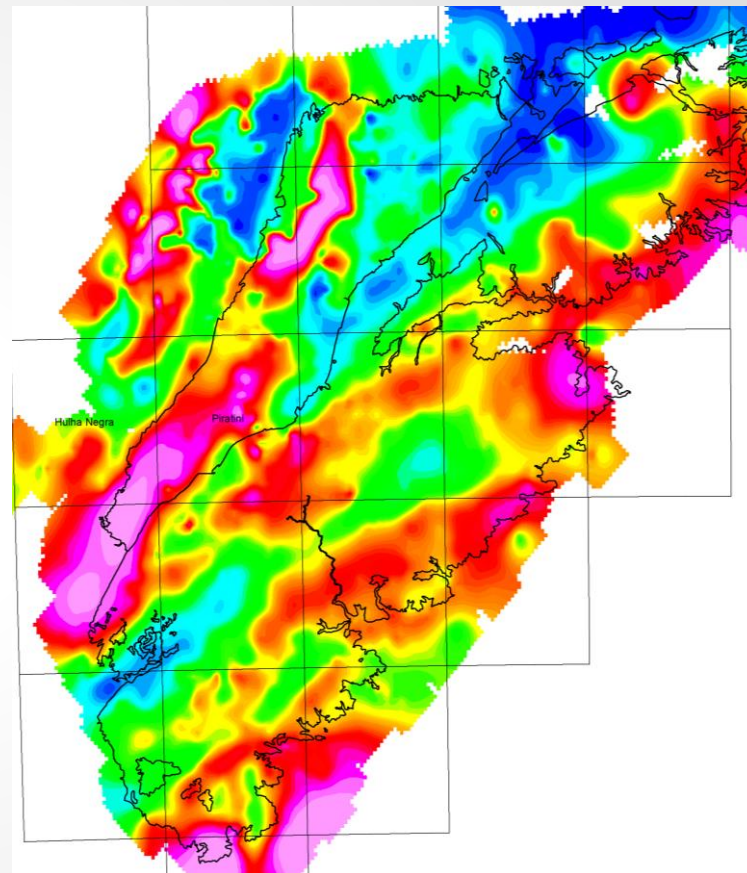


Construção da nova estratigrafia

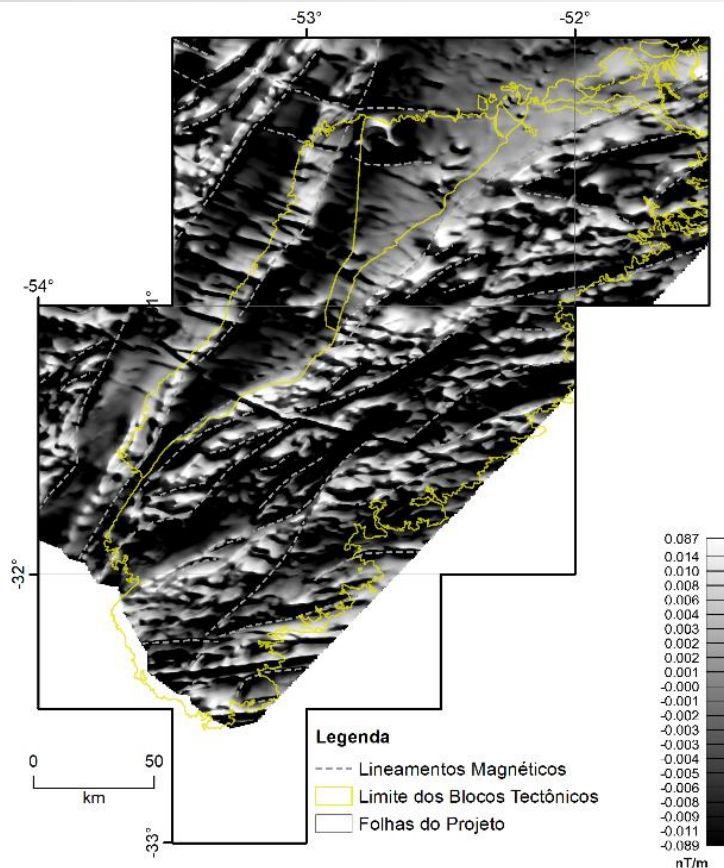
Mapa gravimétrico de anomalia Bouguer Residual



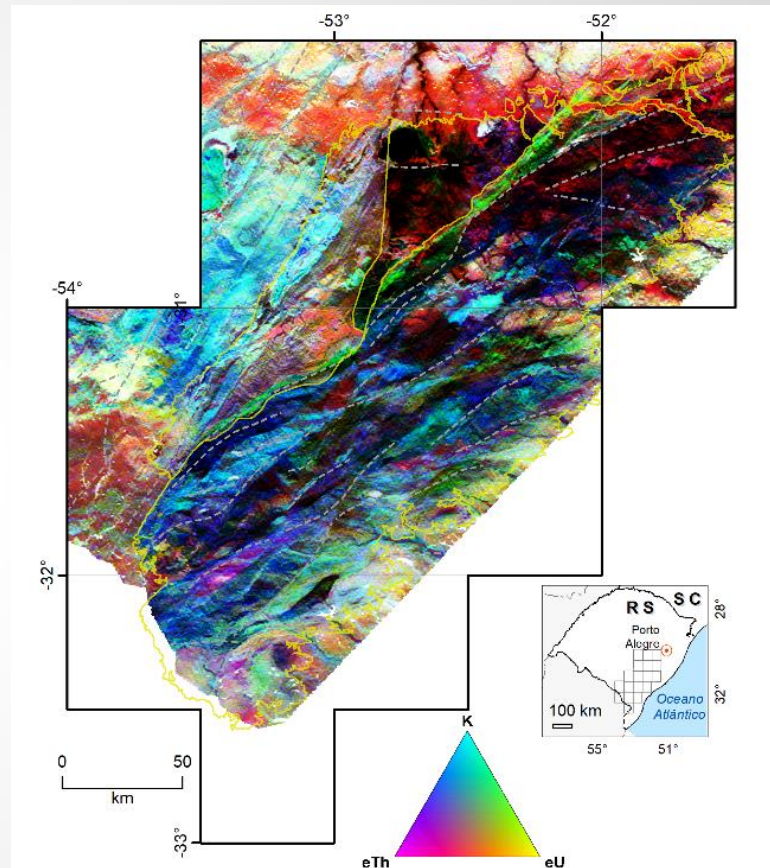
Mapa gravimétrico de anomalia Bouguer

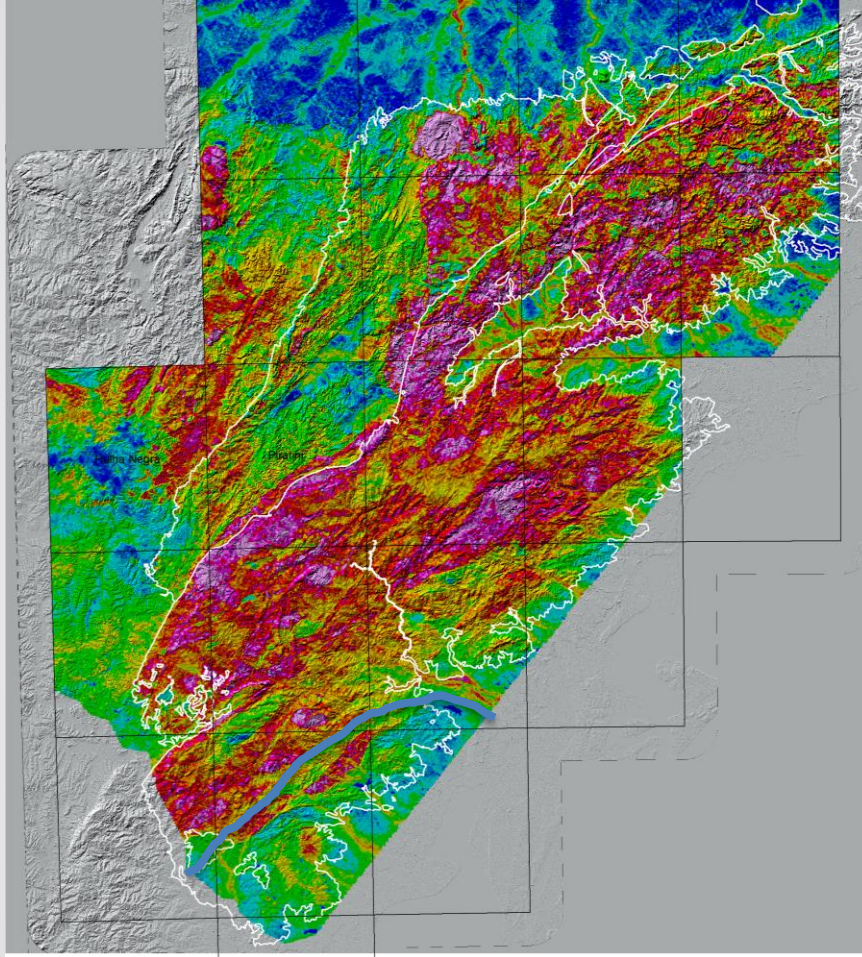


Primeira derivada (magnetométrico)



Mapa de composição ternária CMY



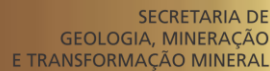
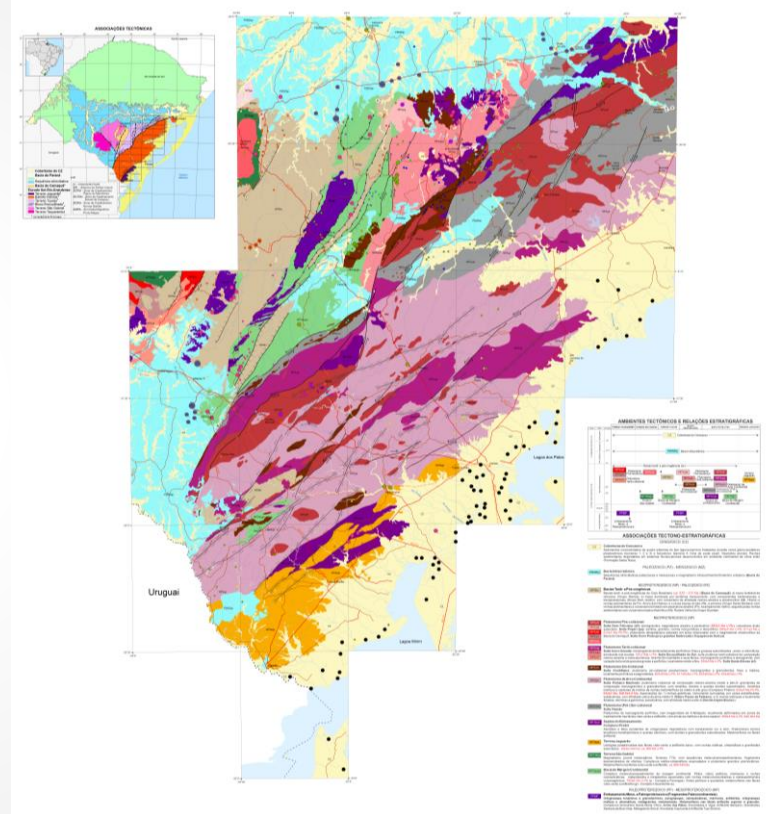
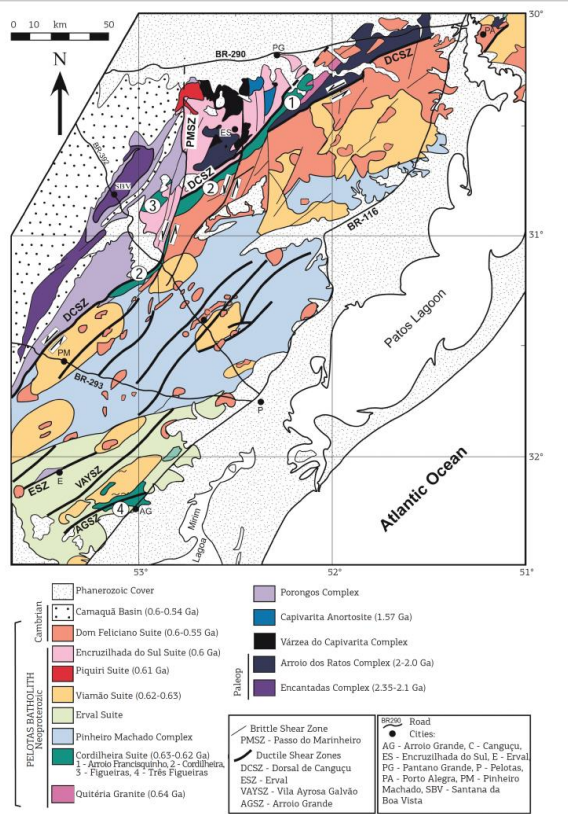


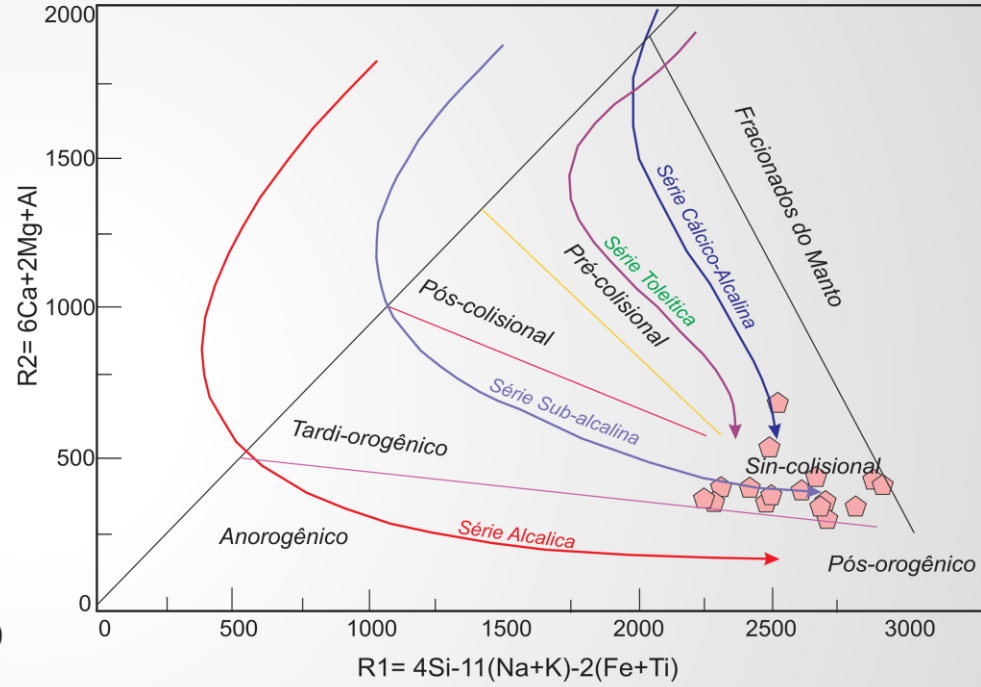
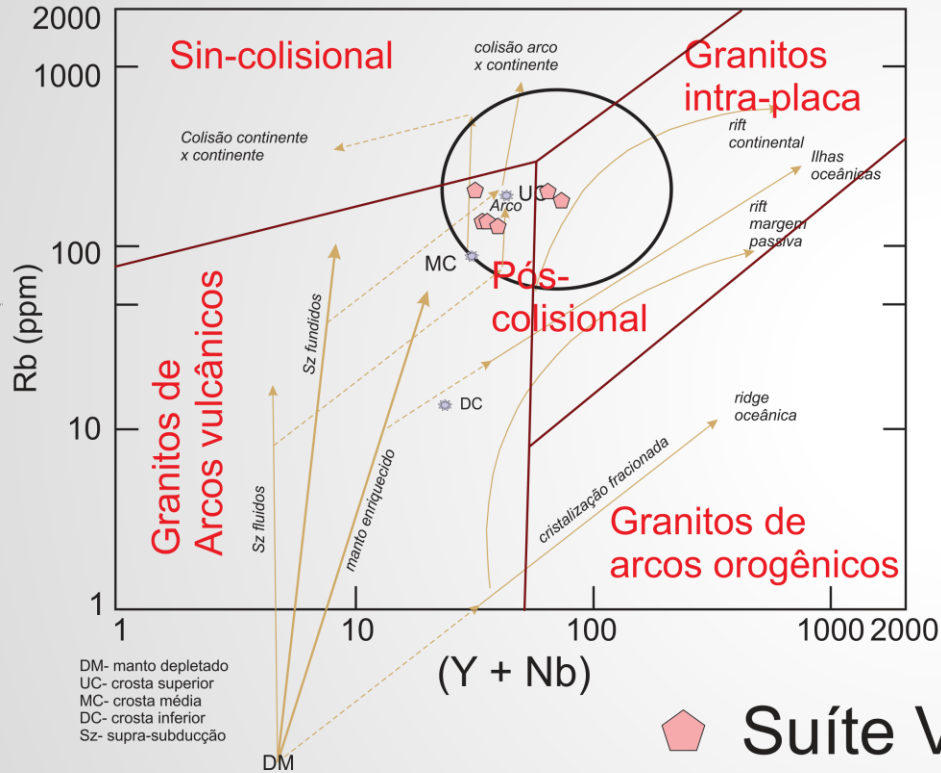
Gamaespectrometria não é o melhor produto para trabalhar
≈ 70% de granitoides

Bloco/Terreno Jaguarão
não será discutido na apresentação

Suíte Viamão

- ca. 635 Ma
- shoshonítica a cálcico-alcalina
- monzogranitos

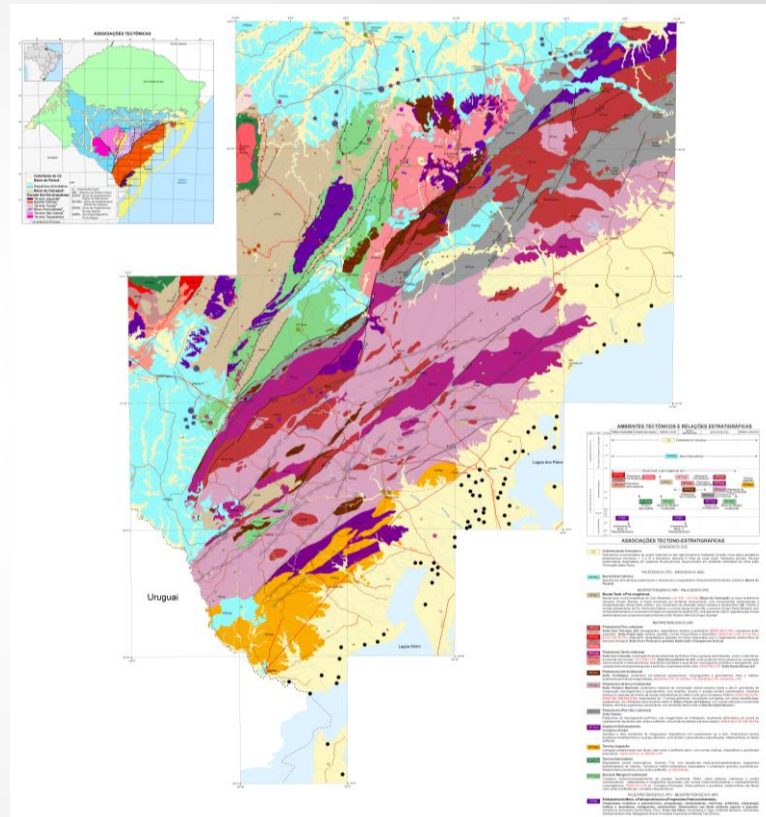
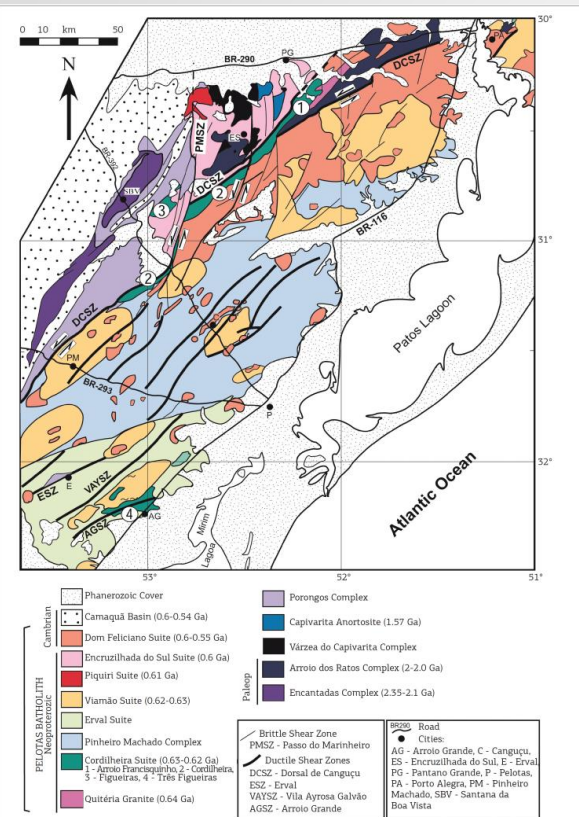


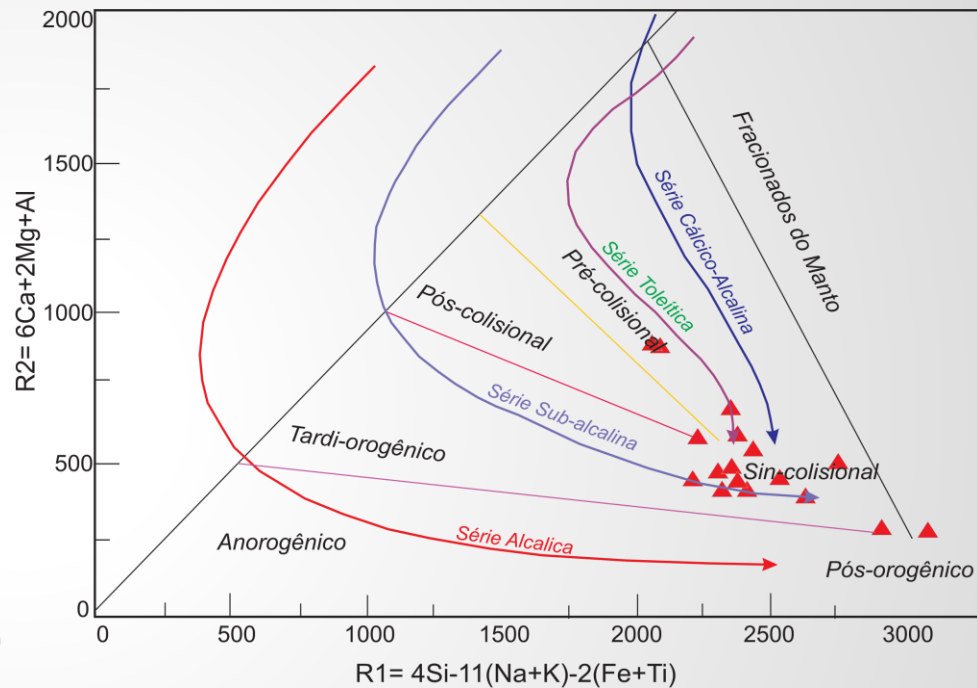
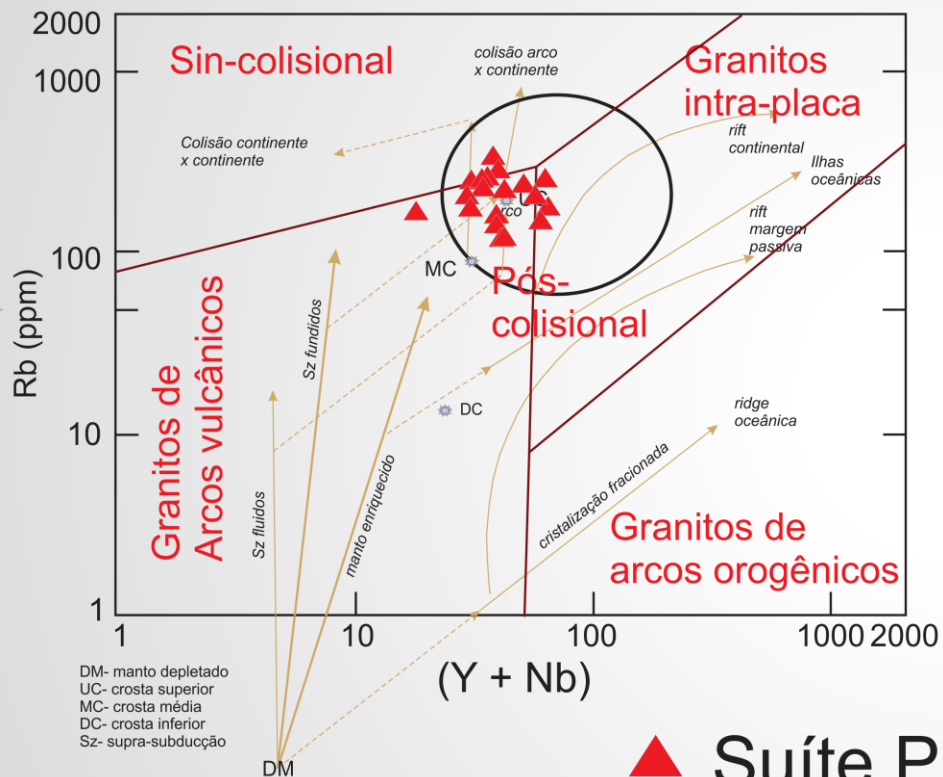


● **Suíte Viamão**

Suíte Pinheiro Machado

- ca. 625 Ma
- cálcico-alcálica
- tonalitos a granodioritos



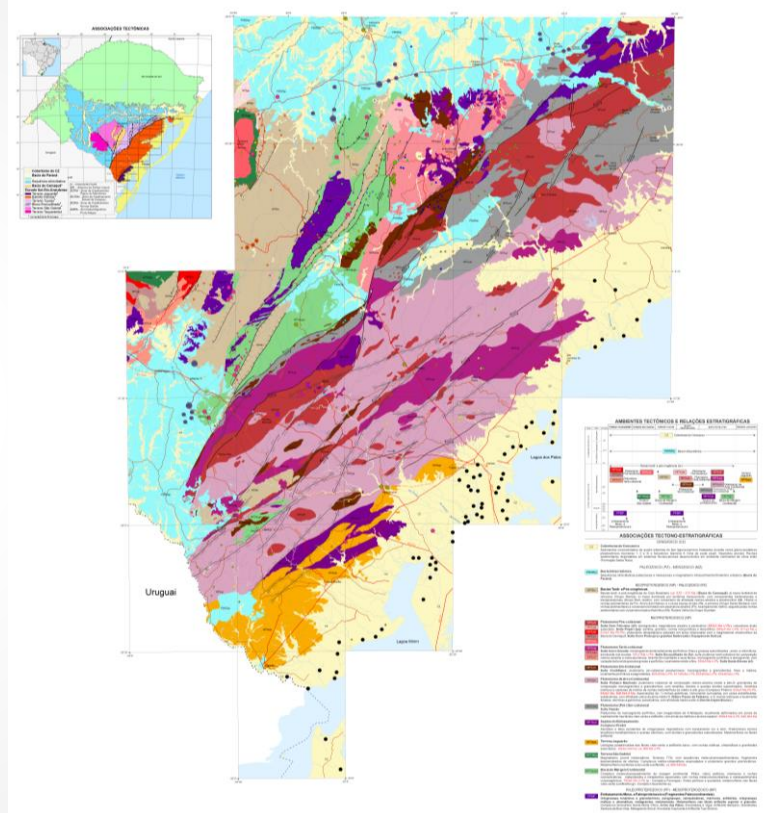
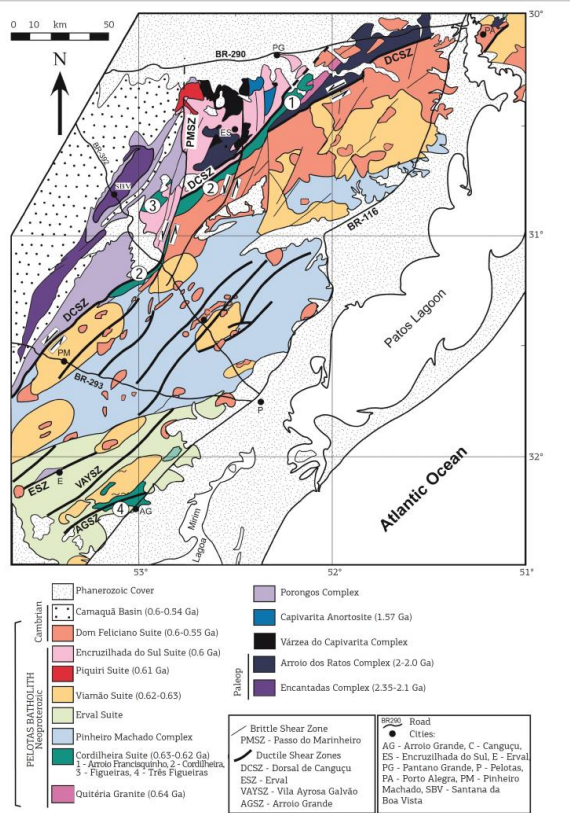


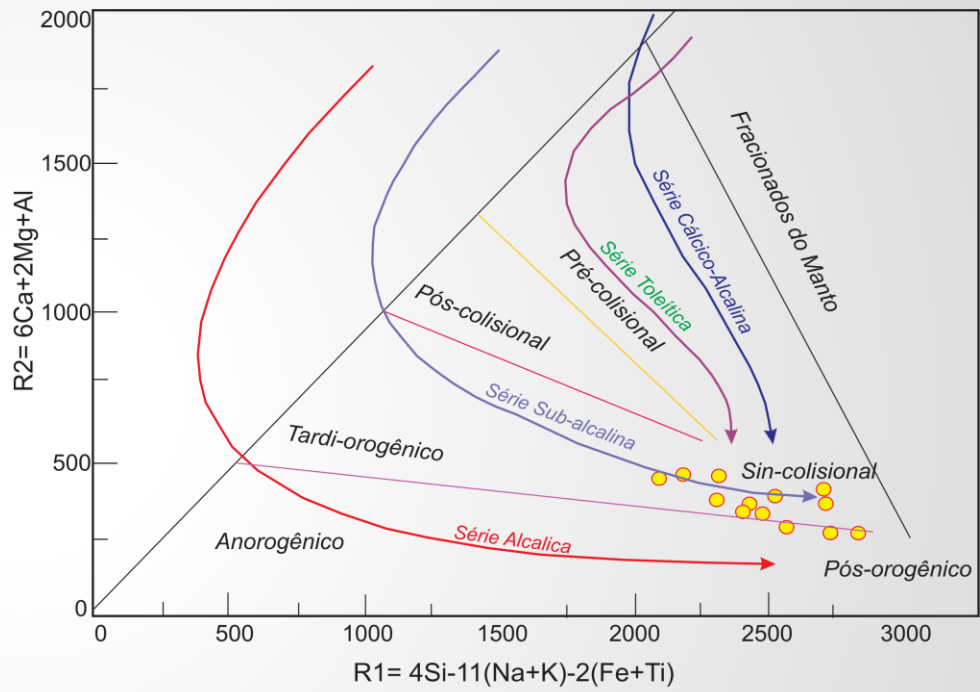
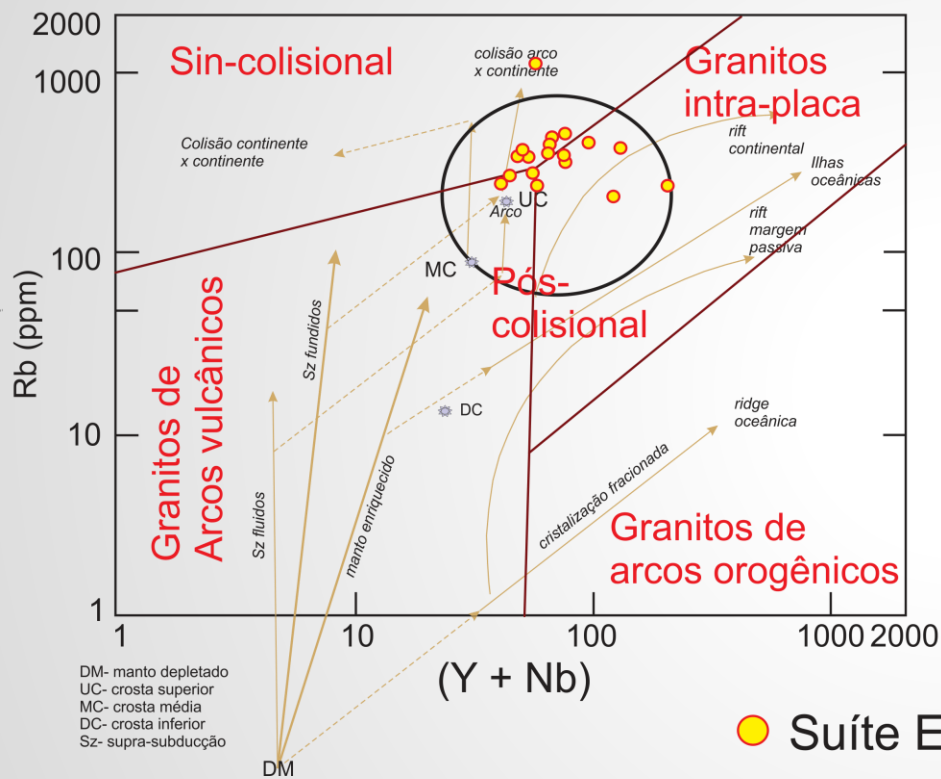
▲ Suíte Pinheiro Machado

- Neste bloco inicial formado
 - Restos de arcos antigos
 - *ca.* 770 Ma gnaisses Porto Alegre e Canguçu
 - Restos do embasamento
 - *ca.* 2,0-2,3 Ga Complexo Arroio dos Ratos
- Na “junção” com o Terrenos Tijucas
 - *ca.* 605 Ma Suíte Cordilheira (granitos colisionais)
 - *ca.* 600 Ma Suíte Piquiri
 - *ca.* 598 Ma Suíte Encruzilhada do Sul

Suíte Encruzilhada do Sul

- ca. 595 Ma
- Monzo a sienogranitos
- cálcico-alcalina

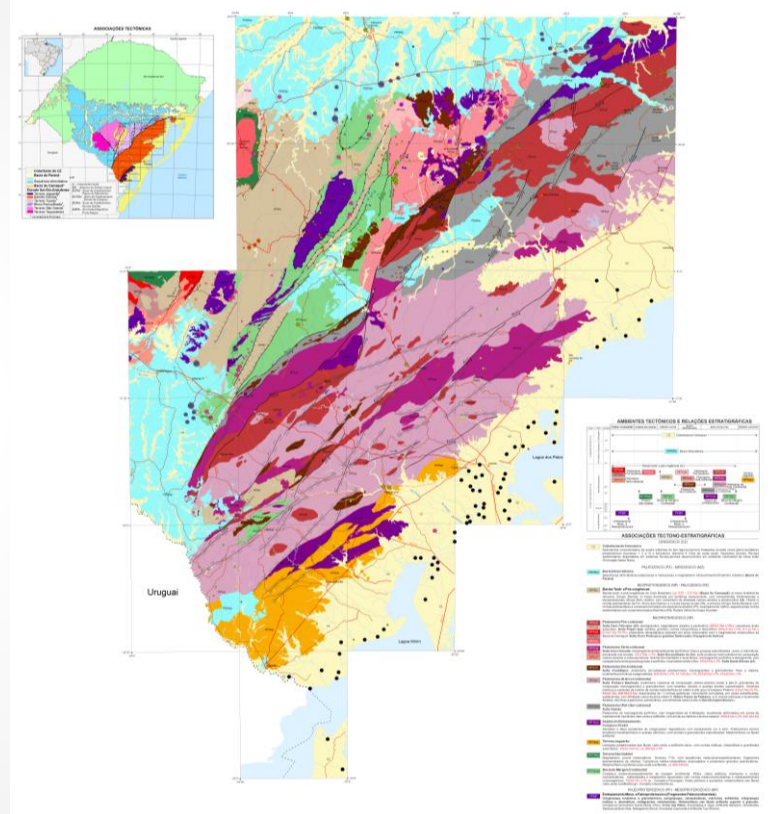
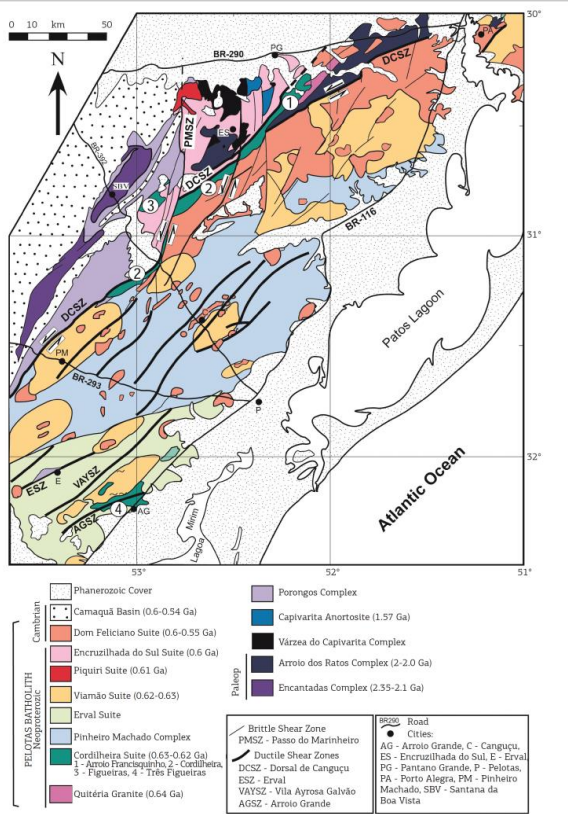


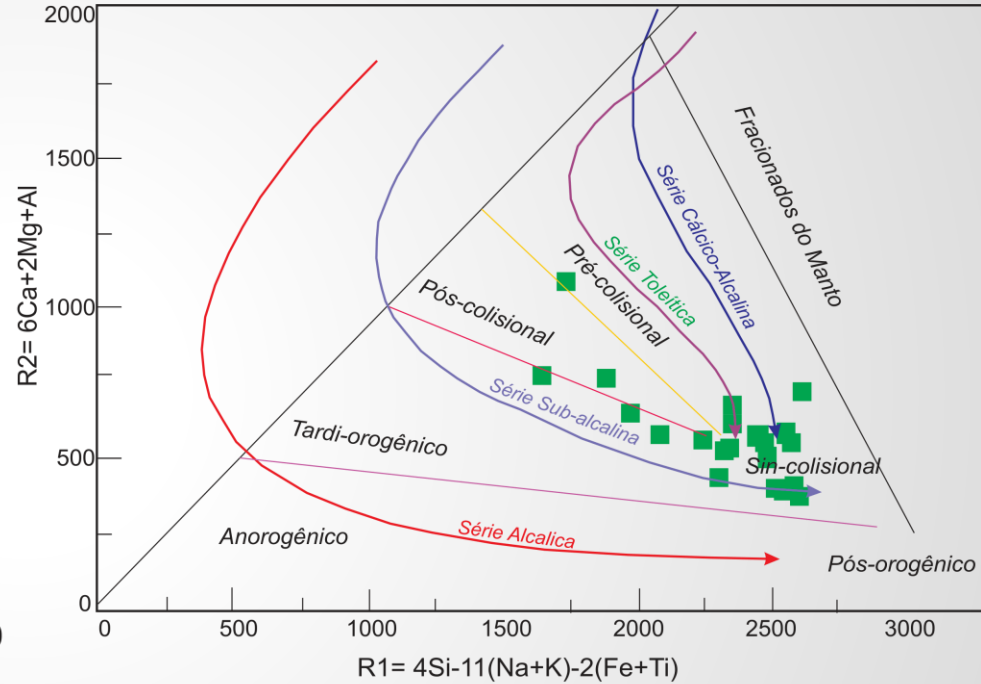
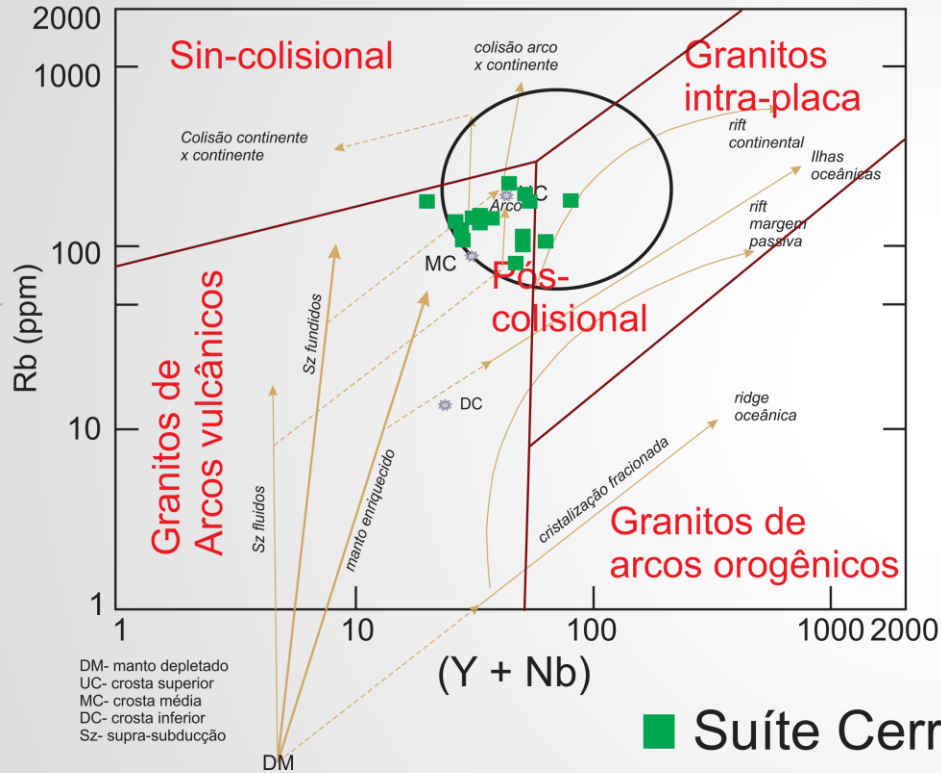


● **Suíte Encruzilhada**

Suíte Cerro Grande

- *ca.* 585 Ma
- cálcico-alcaina
- Monzogranitos

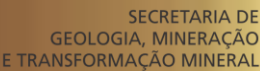
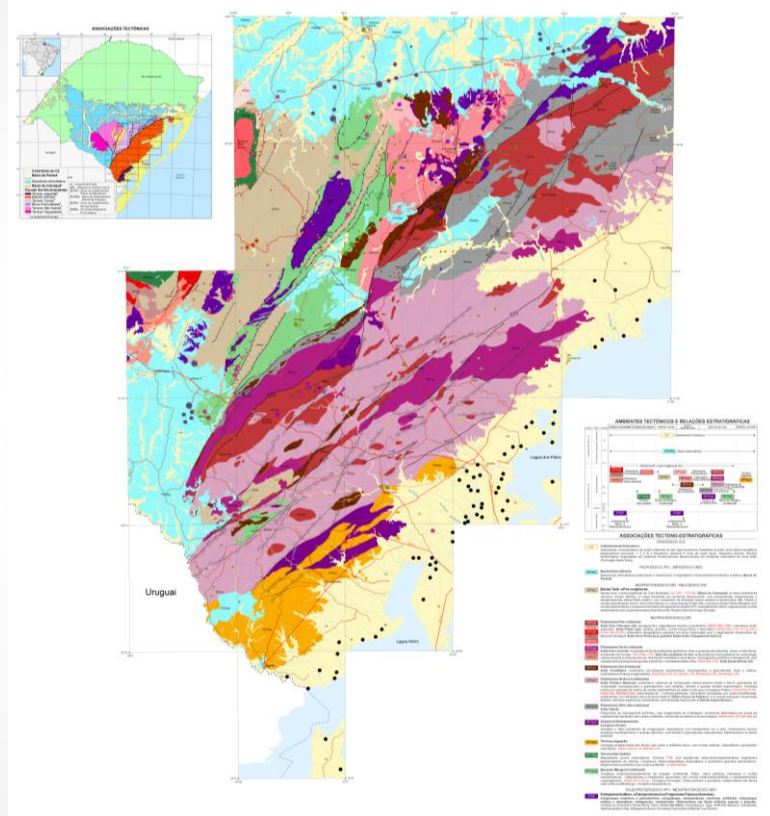
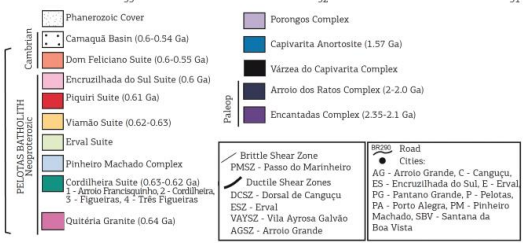
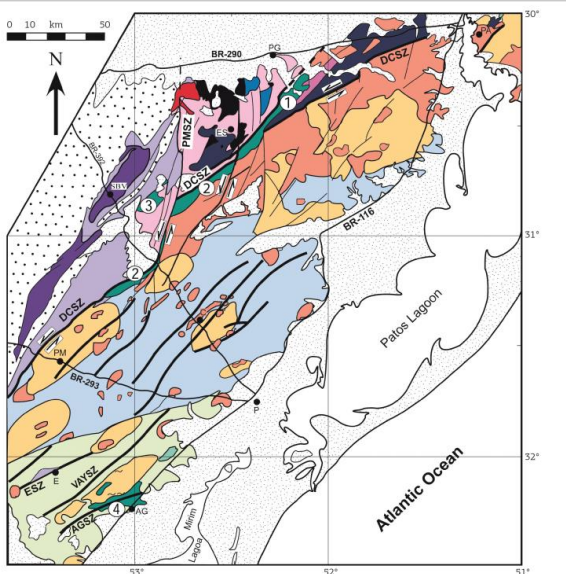


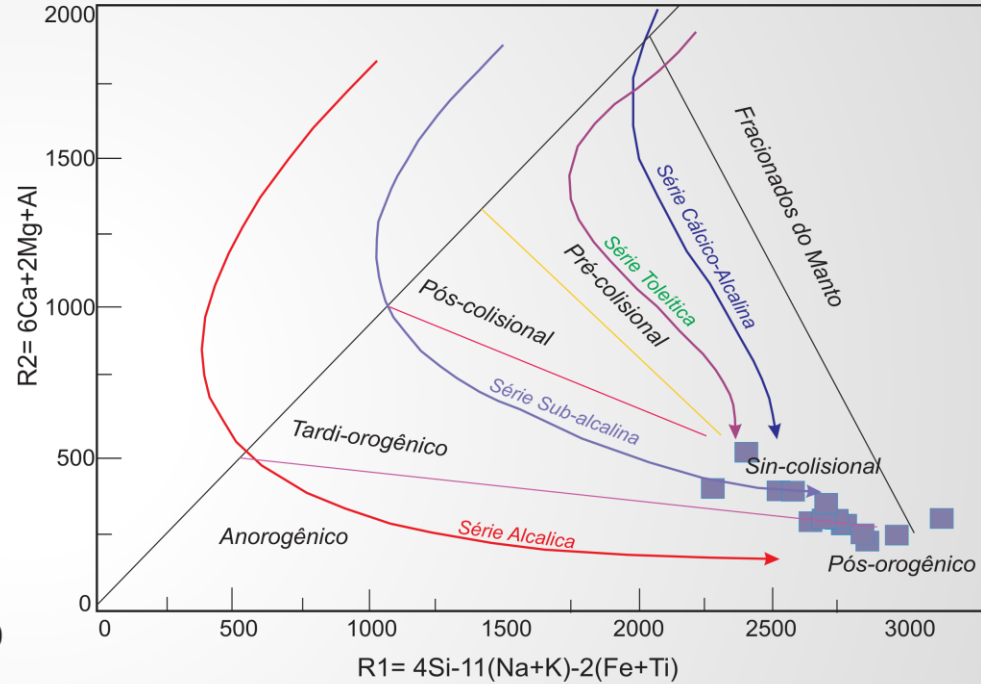
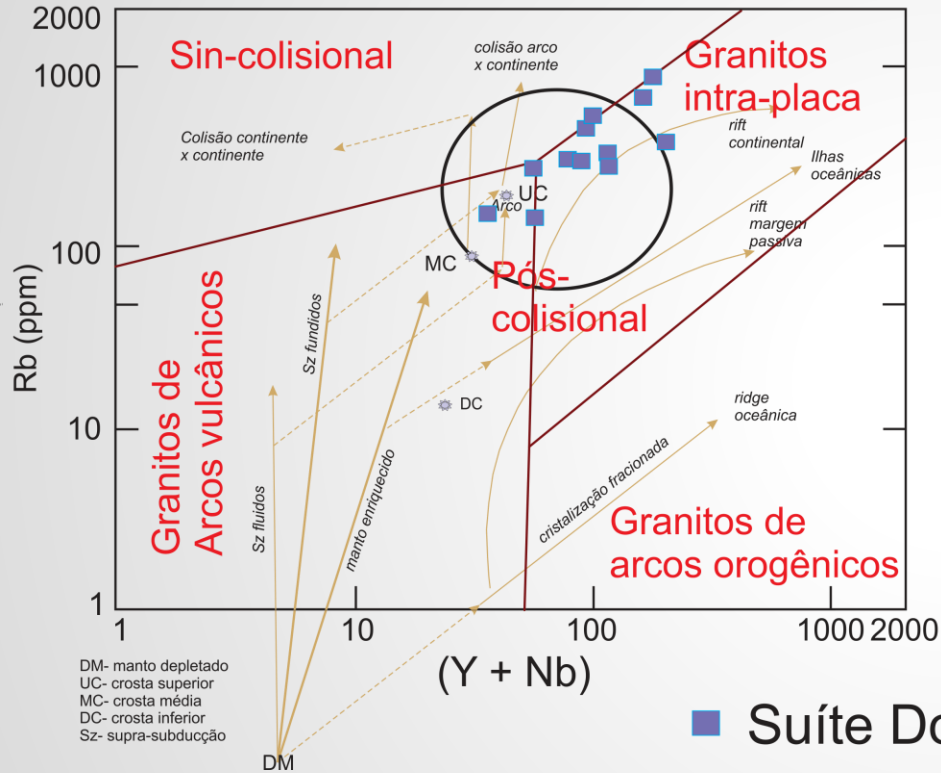


■ **Suíte Cerro Grande**

Suíte Dom Feliciano

- ca. 580 Ma (?)
- alcalina
- Sienogranitos
 - a Suíte Dom Feliciano também apresenta uma fase vulcânica (riolítica)





■ Suíte Dom Feliciano

No processo de estabilização

- *ca.* 540 Ma é gerado vulcanismo alcalino, plutonismo peralcalino, além de corpos máficos.

La geología tiene una tristeza apabullante que nunca podrá sacarse de encima.
Esta tristeza proviene de la idea de que el tiempo trabaja en su contra.

[Salvador Dali](#)



Obrigado