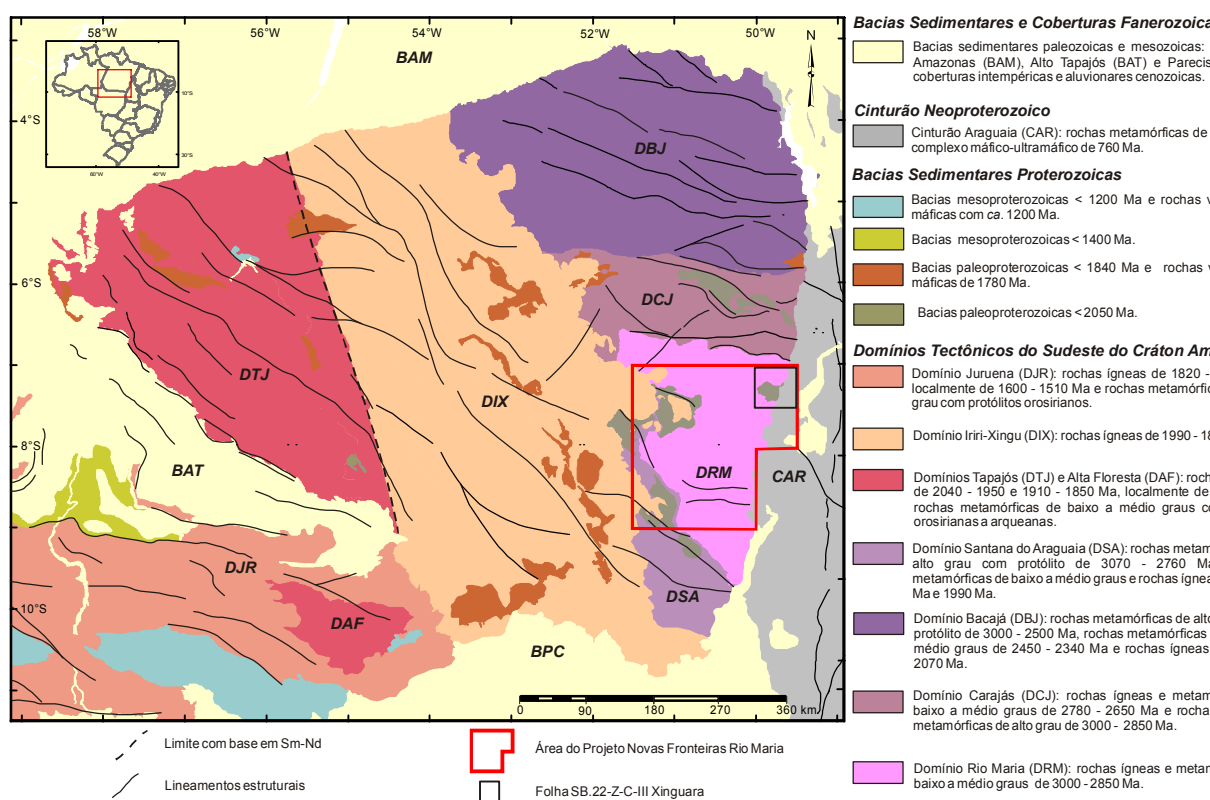
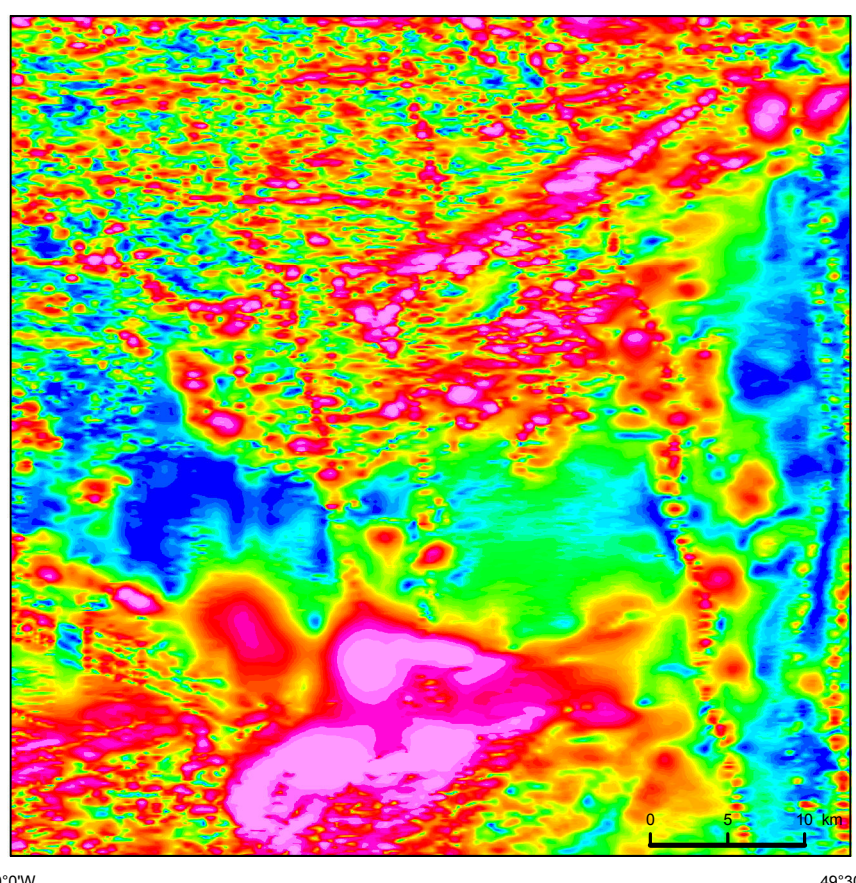




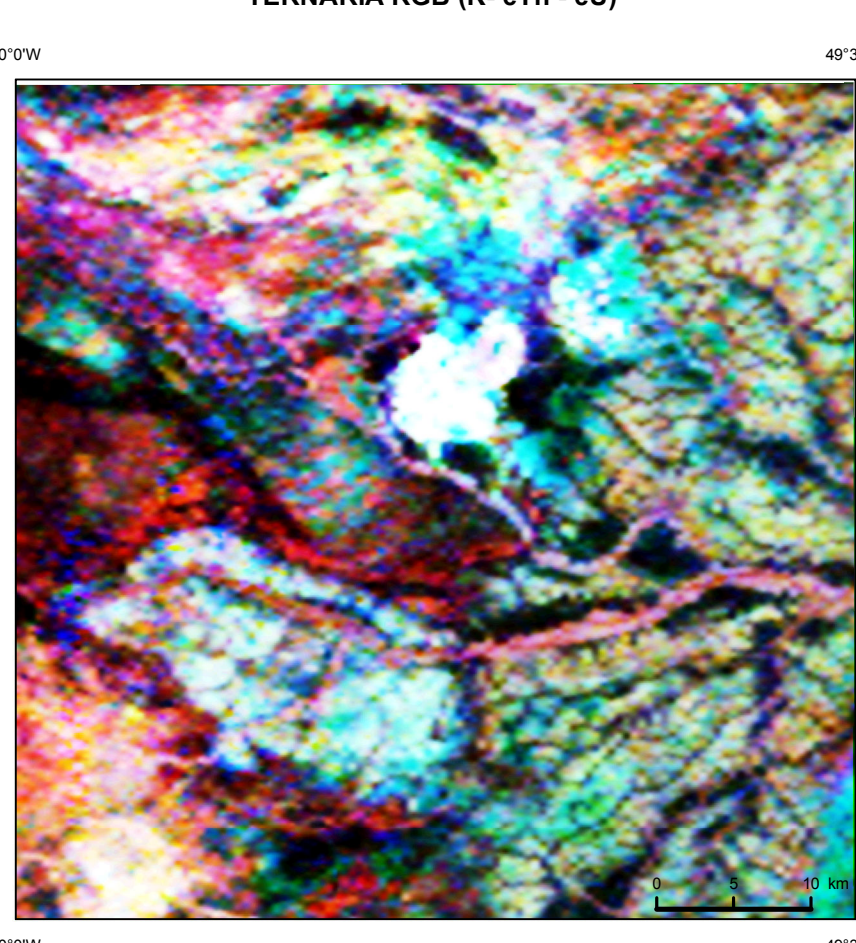
CARTA GEOLOGICA-GEOFISICA FOLHA SB 22-Z-C-III XINGUARA ESCALA 1:100.000 - CPRM 2019



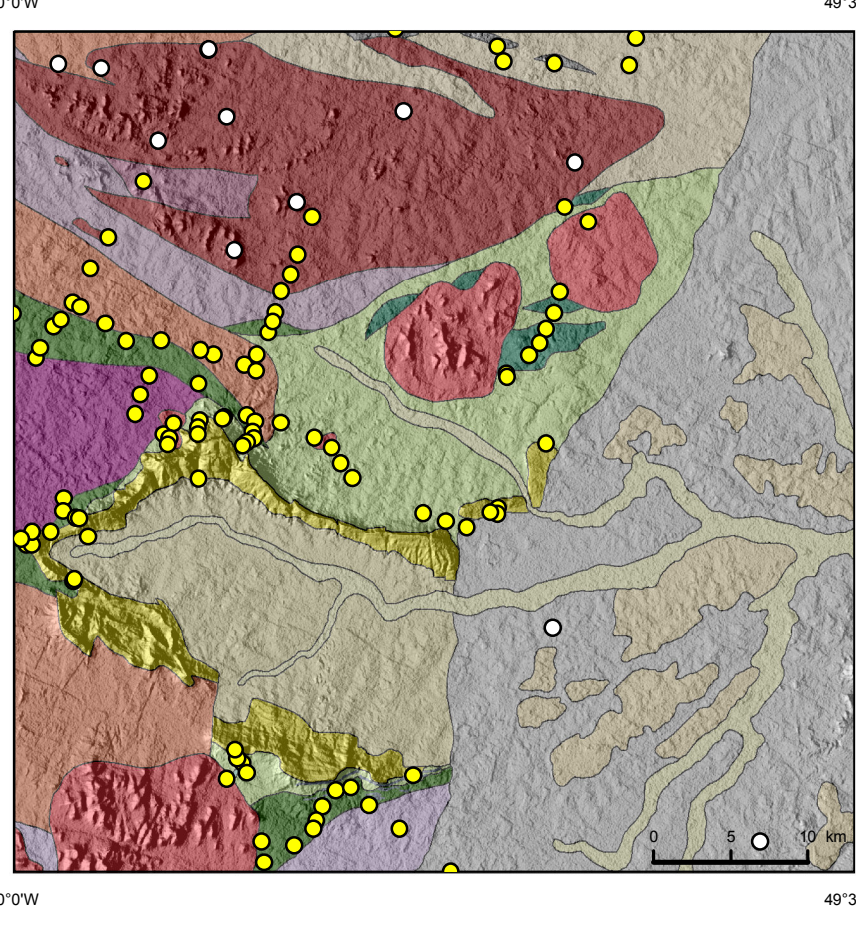
AEROMAGNETOMETRIA - GRADIENTE TOTAL



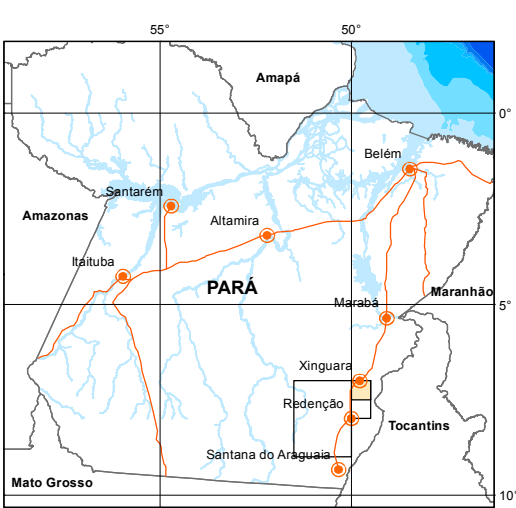
AEROGAMAESPECTROMETRIA - IMAGEM DE COMPOSIÇÃO TERNÁRIA RGB (K-eTh - eU)



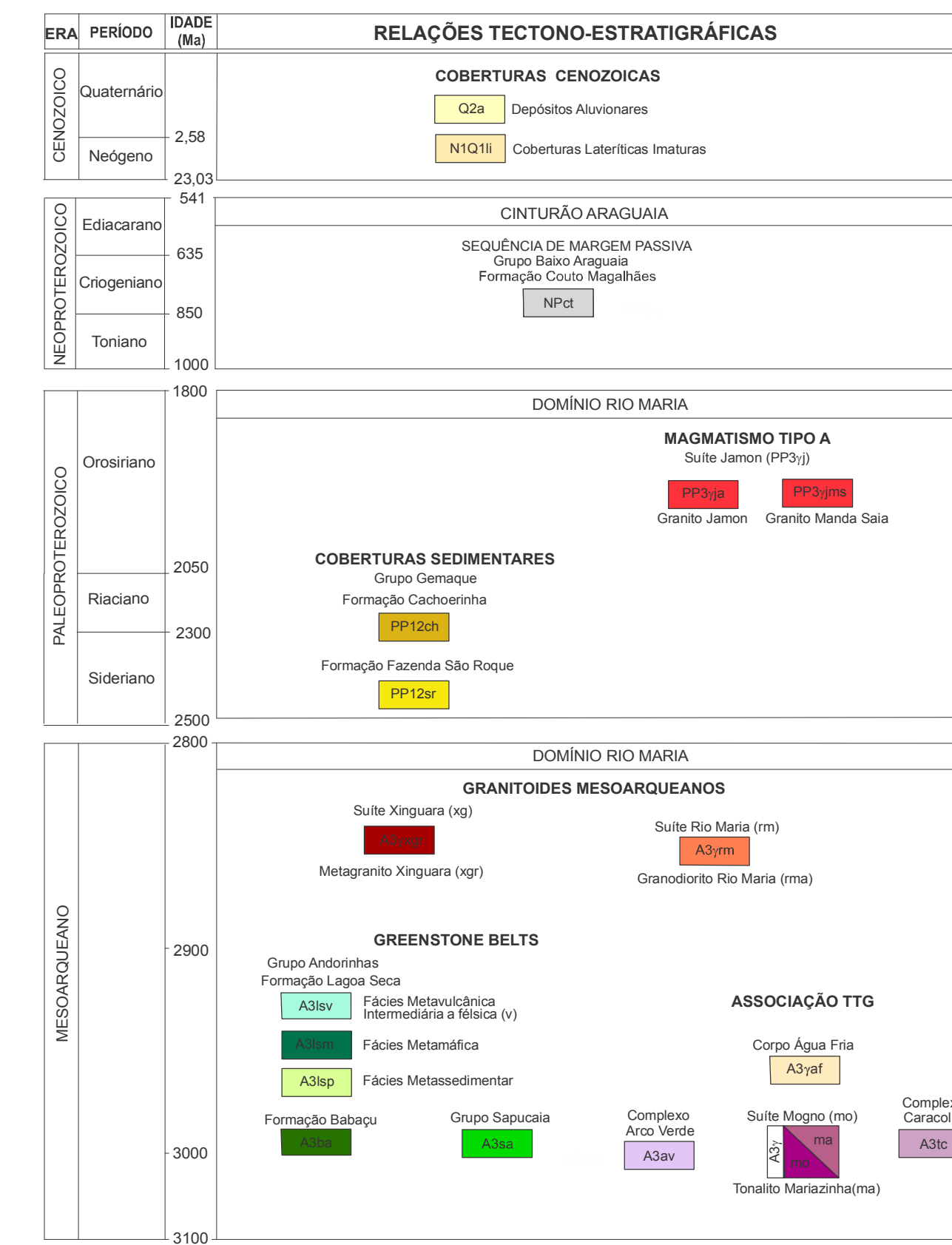
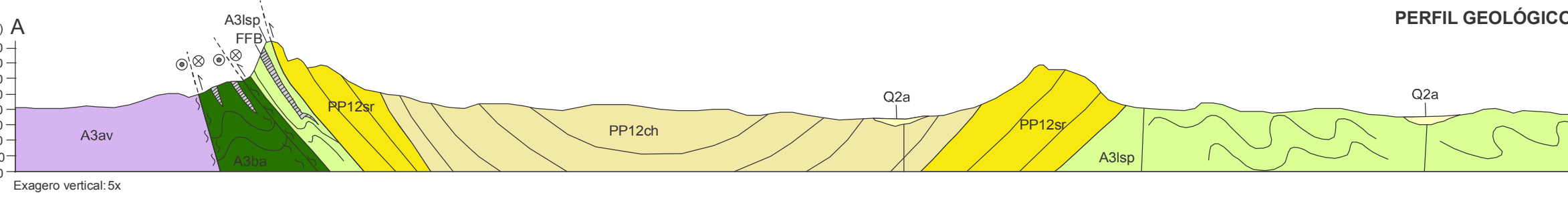
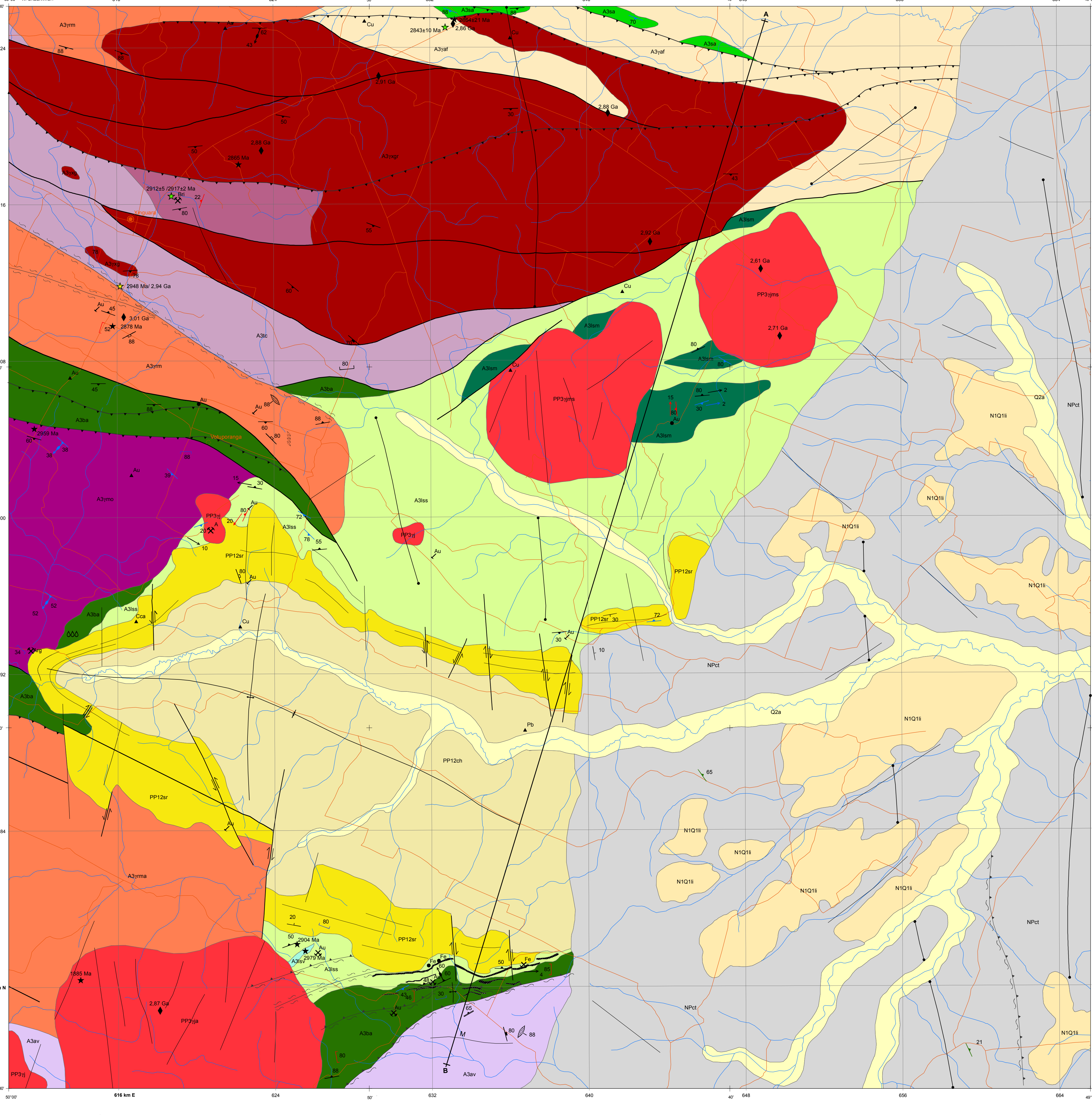
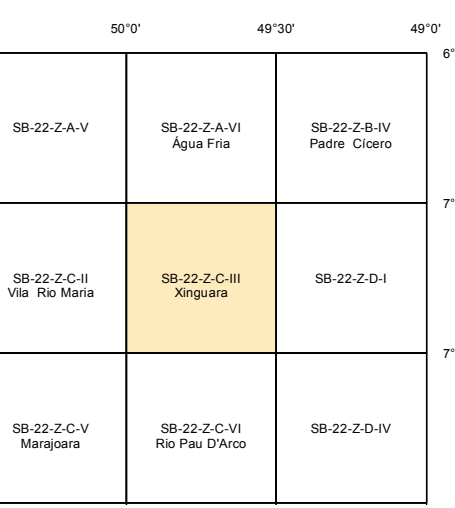
FUSÃO GEOLOGIA + RELEVO SOMBREADO



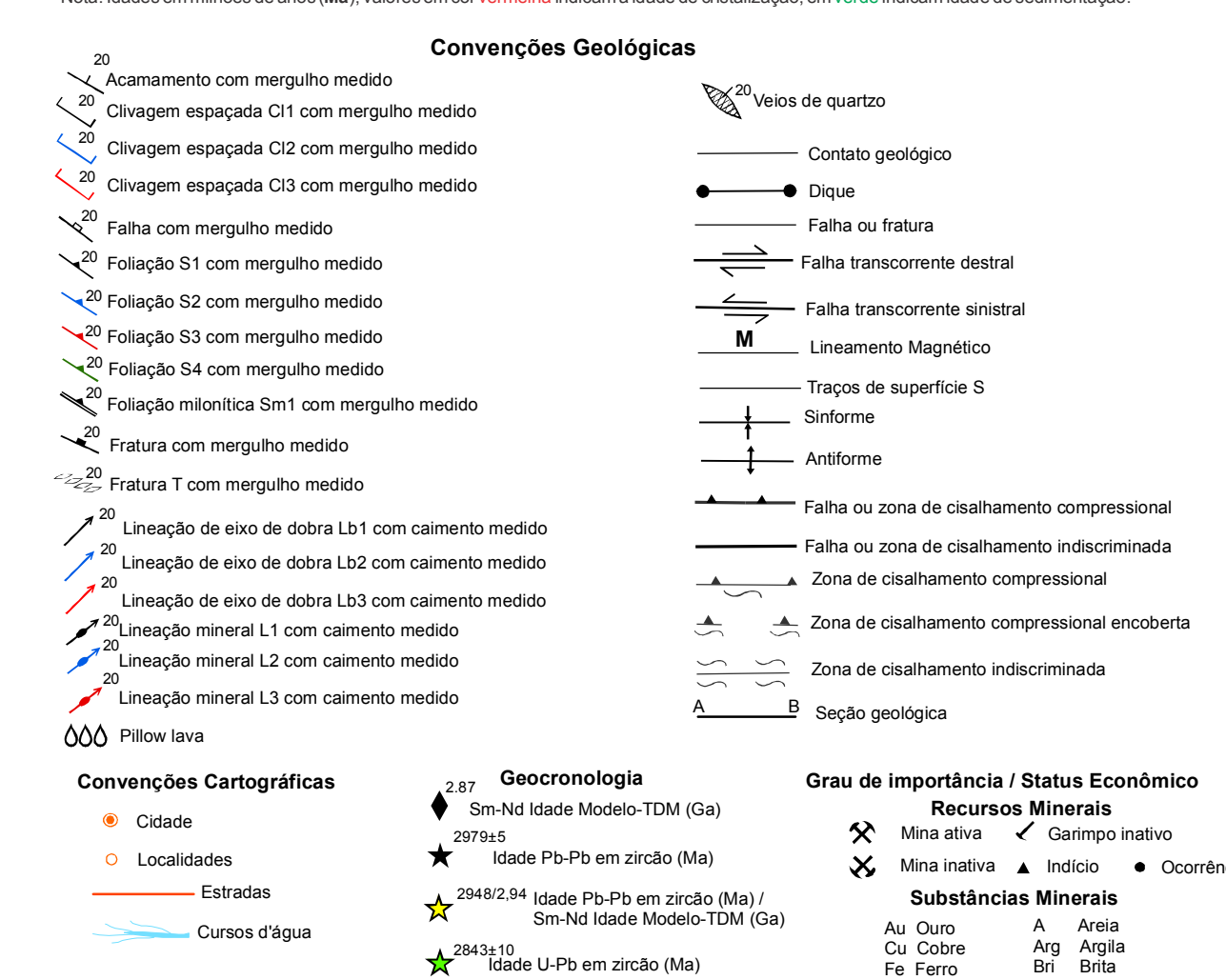
LOCALIZAÇÃO DA FOLHA



ARTICULAÇÃO DA FOLHA



UNIDADES LITOESTRATIGRÁFICAS: Detailed descriptions of geological units including their lithology, age, and structural characteristics.



AVISO LEGAL: Legal notice regarding the use and reproduction of the map's content.

CRÉDITOS DE AUTORIA: Acknowledgments to the authors and technical staff involved in the project.

COORDENAÇÃO TÉCNICA REGIONAL: Regional technical coordination details.

COORDENAÇÃO TÉCNICA NACIONAL: National technical coordination details.

COOPERAÇÃO TÉCNICA: Technical cooperation details.

BASE CARTOGRÁFICA: Cartographic base information including projection and datum.

BASE GEOLOGICA: Geological base information and scale details.

CARTA GEOLOGICA-GEOFISICA FOLHA SB 22-Z-C-III XINGUARA ESCALA 1:100.000

PROJECÇÃO UNIVERSAL TRANSVERSA DE MERCATOR

Origem da QUILÔMETRAGEM UTM: Equador e Meridiano Central 51°W

acrescidas as constantes 10 000 000 e 500 000, respectivamente.

Dados em horizontal: SIRGAS 2000

Declinação magnética do centro da folha em 2017 = 20°32' W, variação anual 0'07"

FONTE: NOAA National Geophysical Data Center

