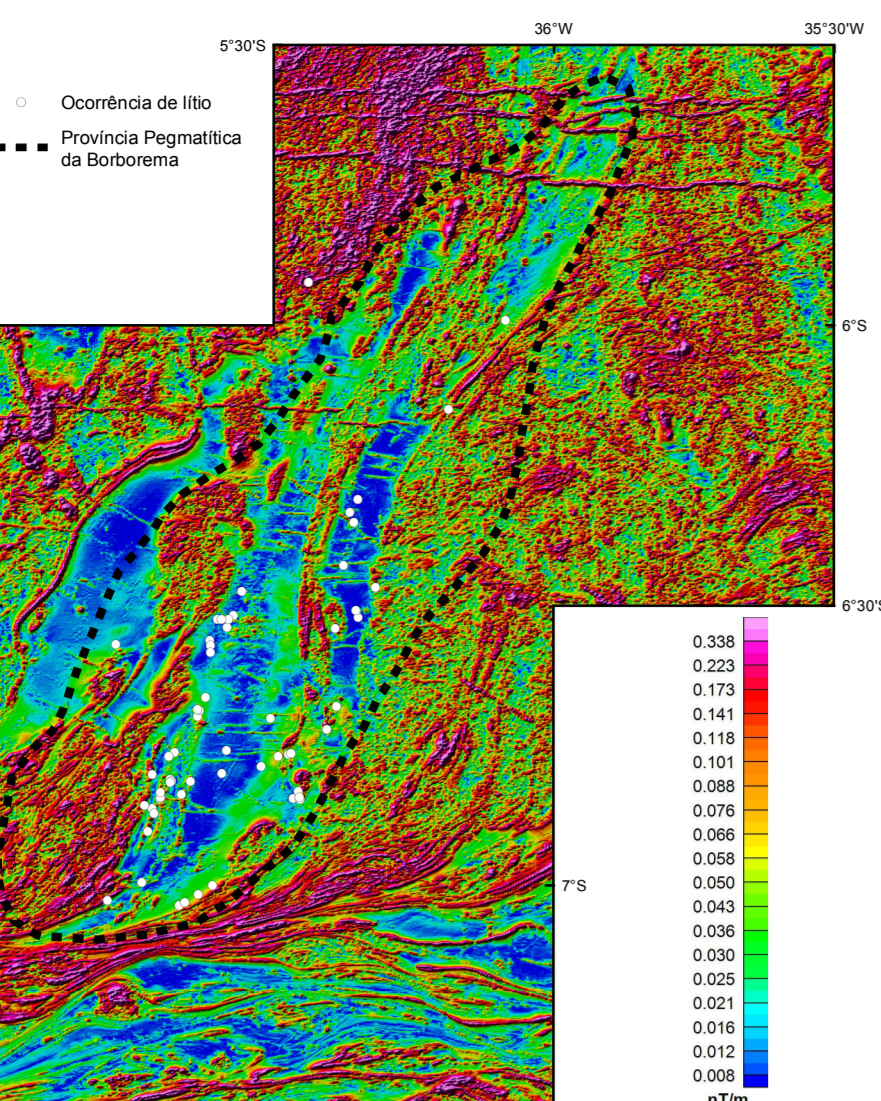
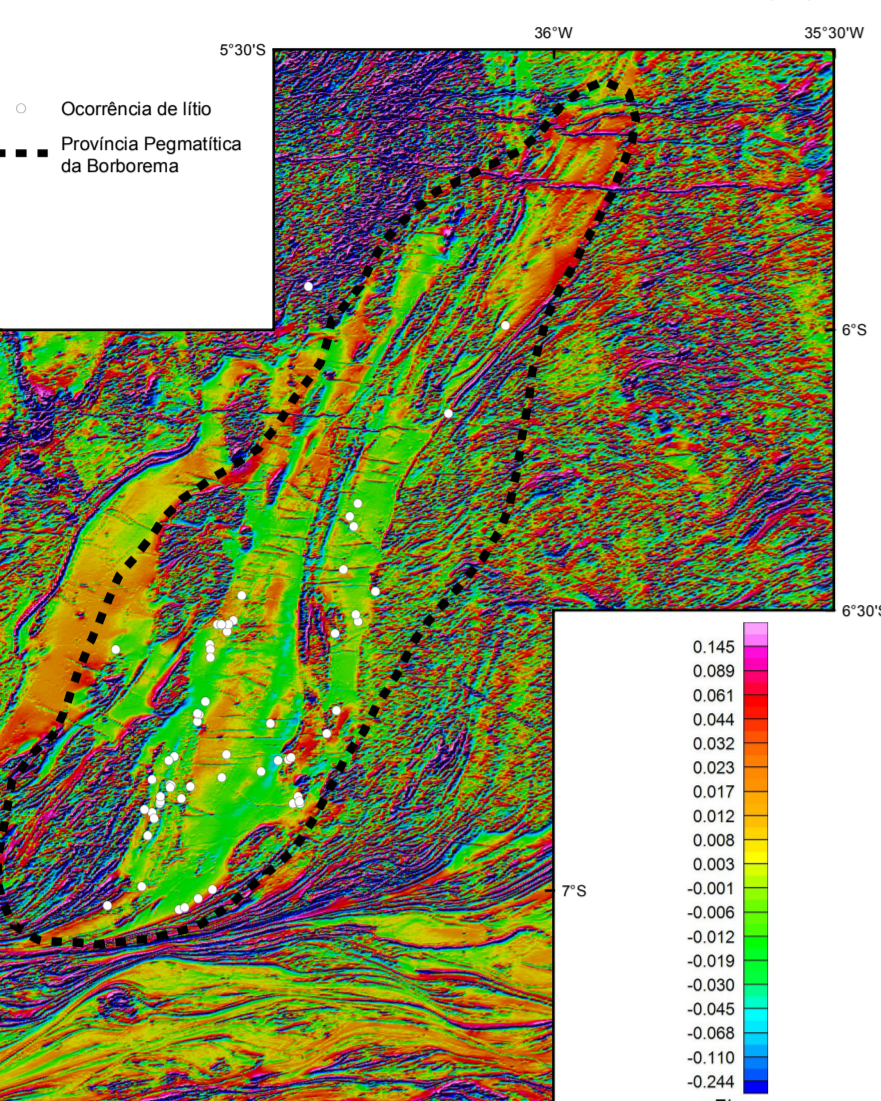


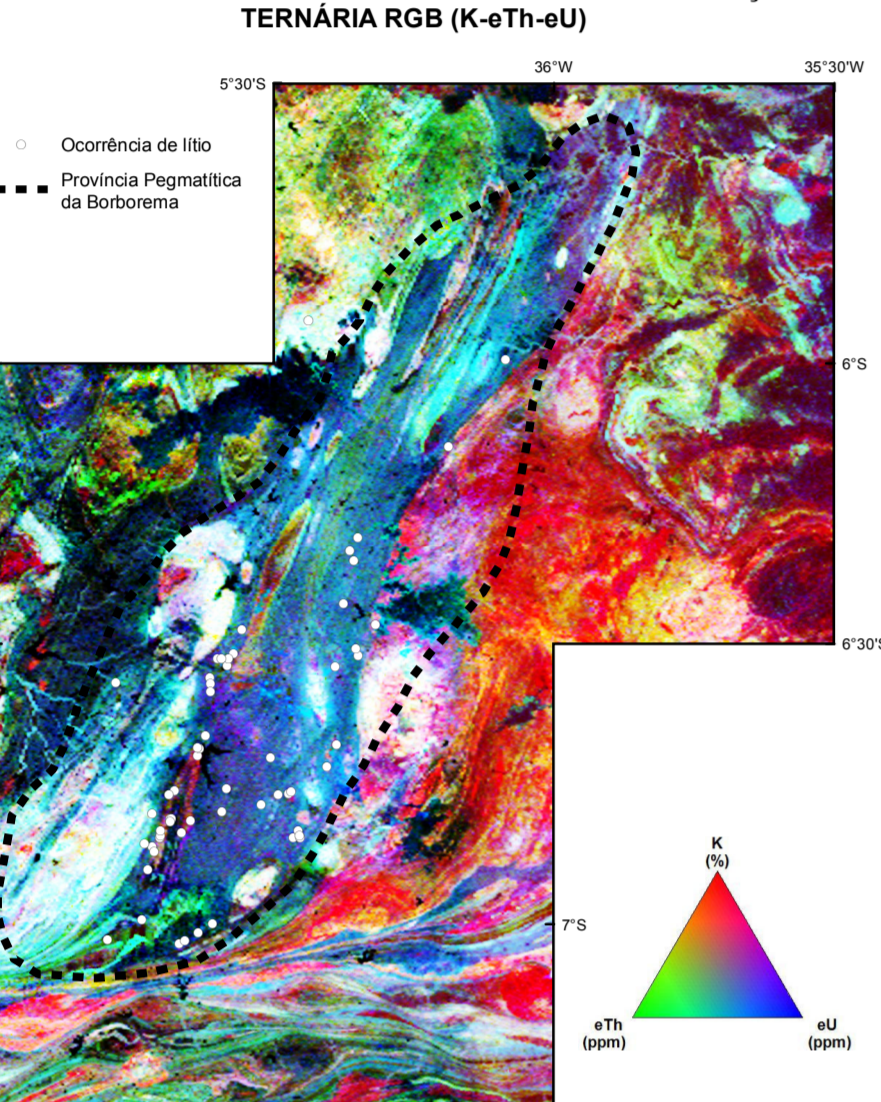
AEROMAGNETOMETRIA - INCLINAÇÃO DO SINAL ANALÍTICO



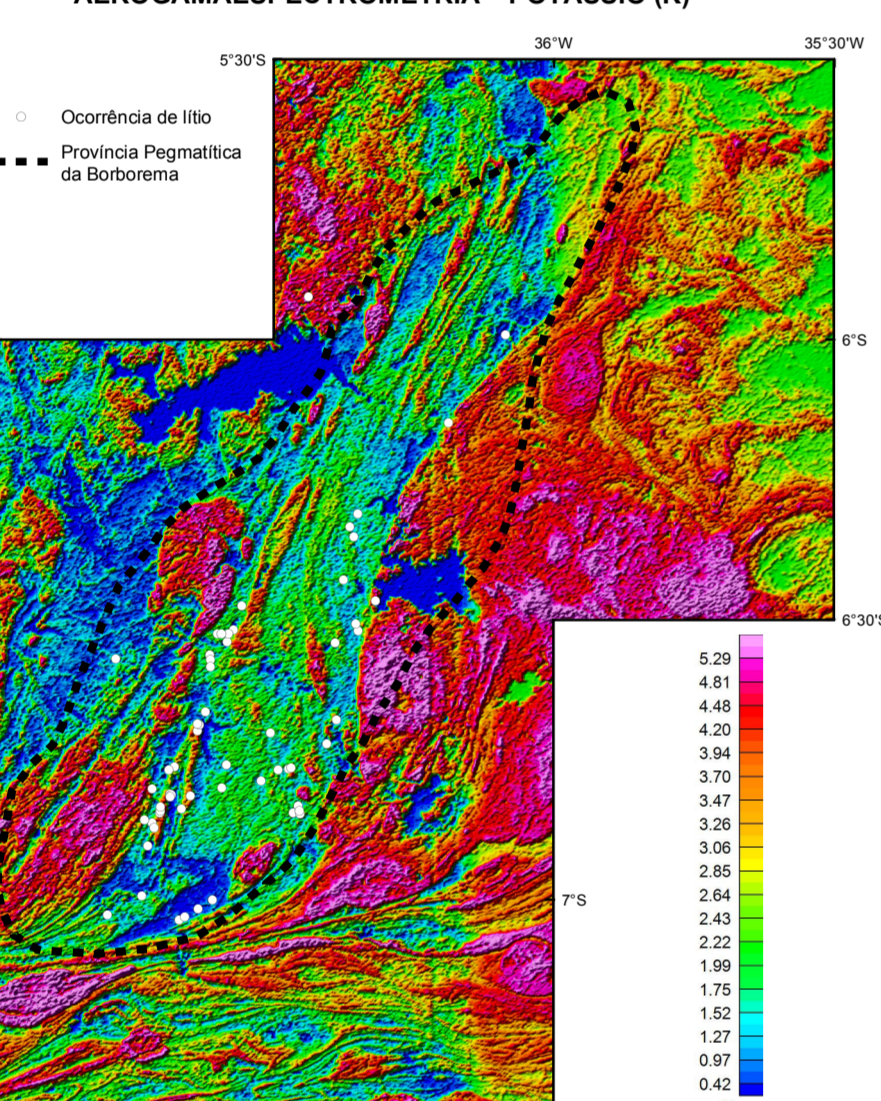
AEROMAGNETOMETRIA - PRIMEIRA DERIVADA VERTICAL (Dz)



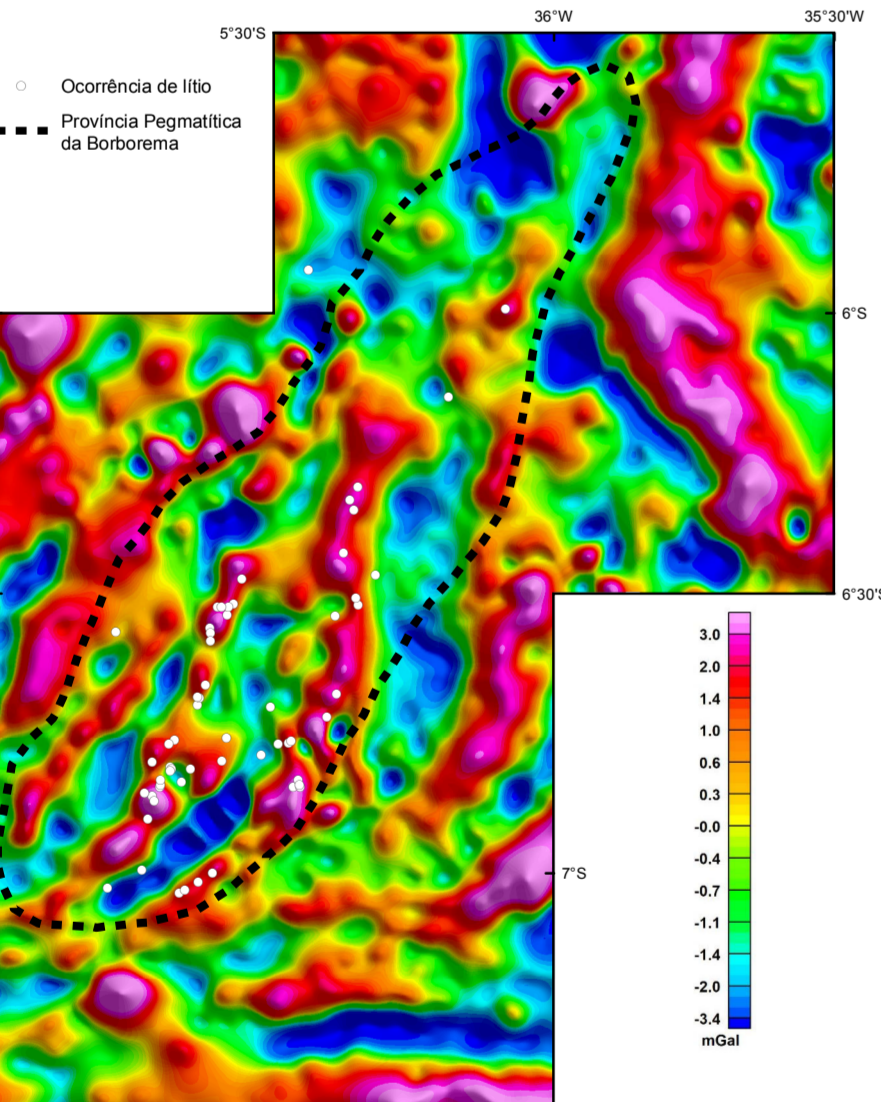
AEROGAMASPECTROMETRIA - IMAGEM DE COMPOSIÇÃO TERNÁRIA RGB (K-Th-U)



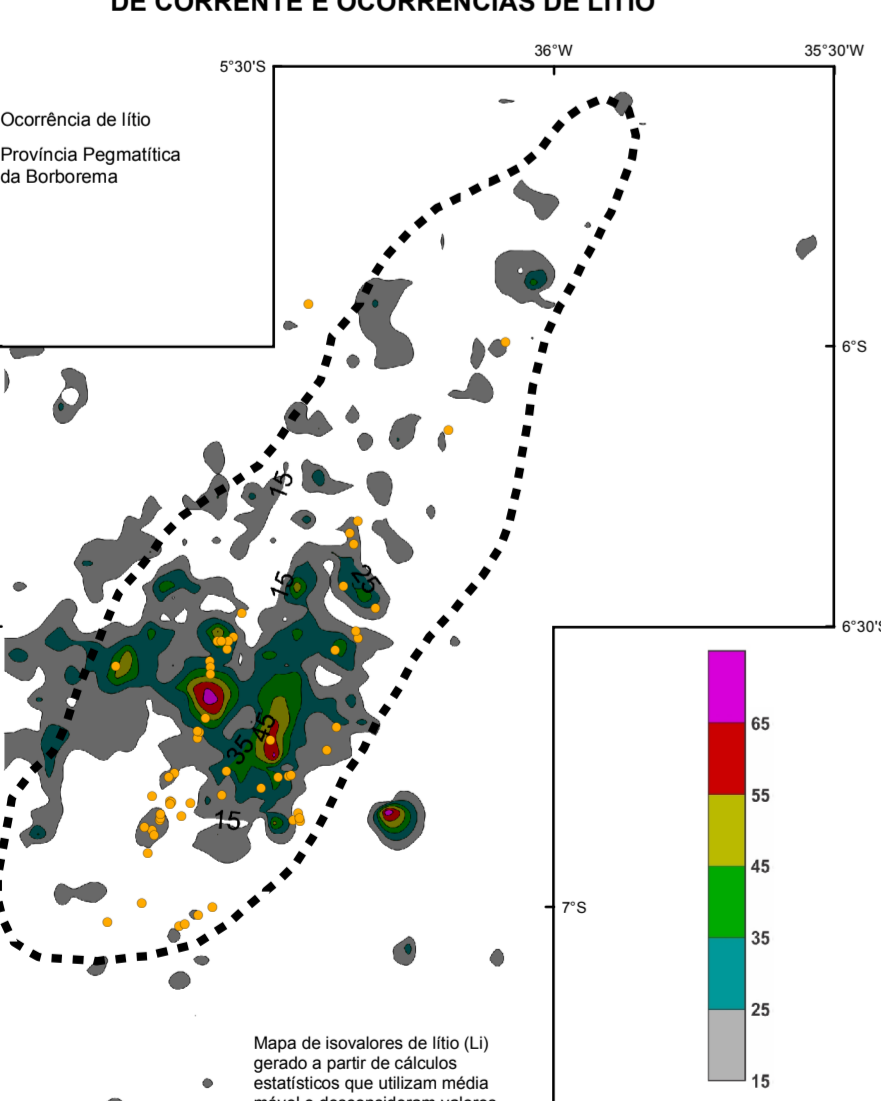
AEROGAMASPECTROMETRIA - POTÁSSIO (K)



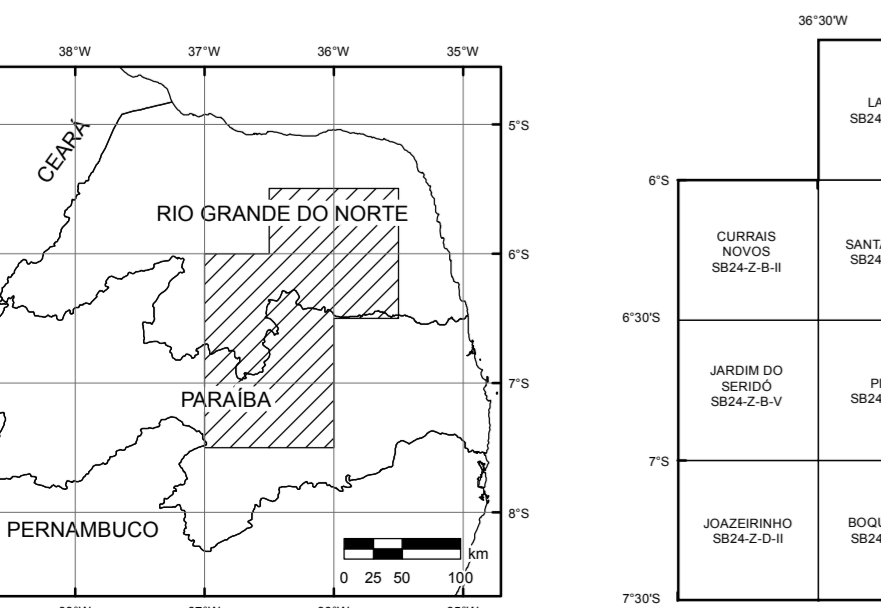
GRAVIMETRIA - ANOMALIA BOUGUER



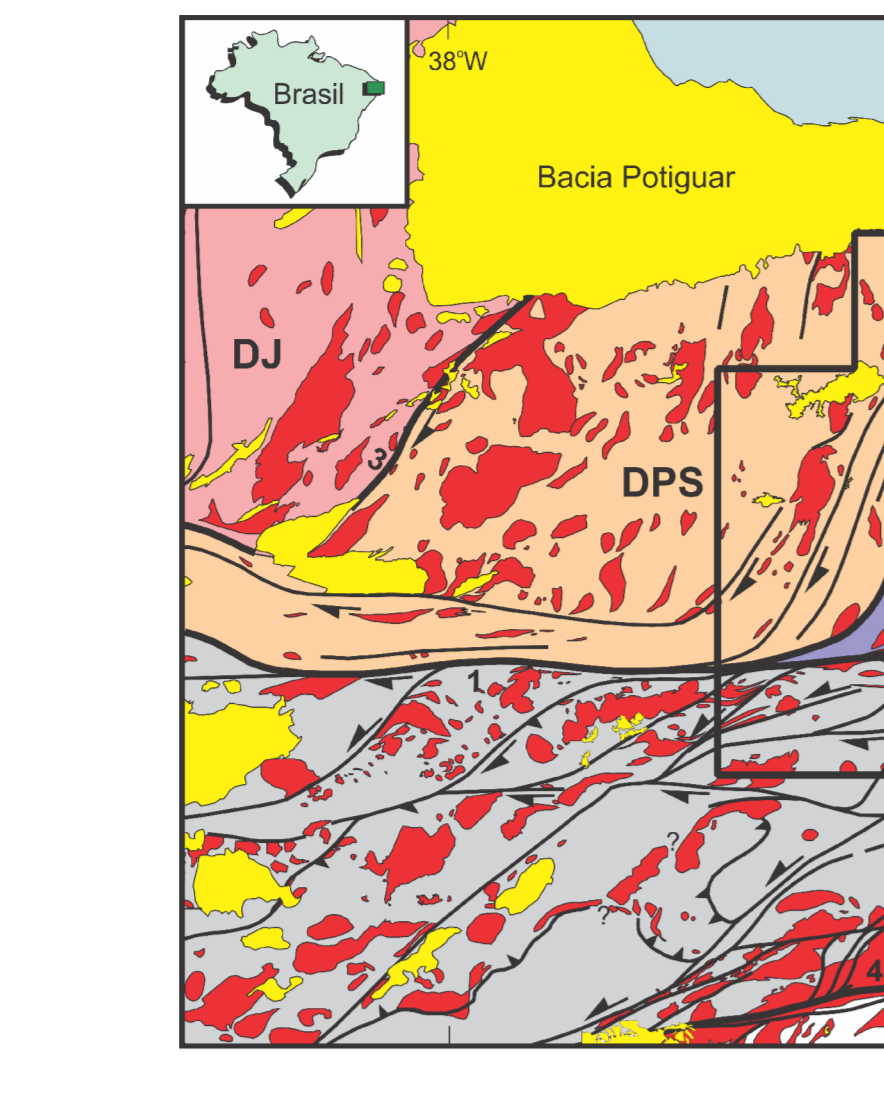
MAPA DE ISOVALORES GEOQUÍMICOS (LI) DE SEDIMENTOS DE CORRENTE E OCORRÊNCIAS DE LITO



LOCALIZAÇÃO DA ÁREA DE TRABALHO



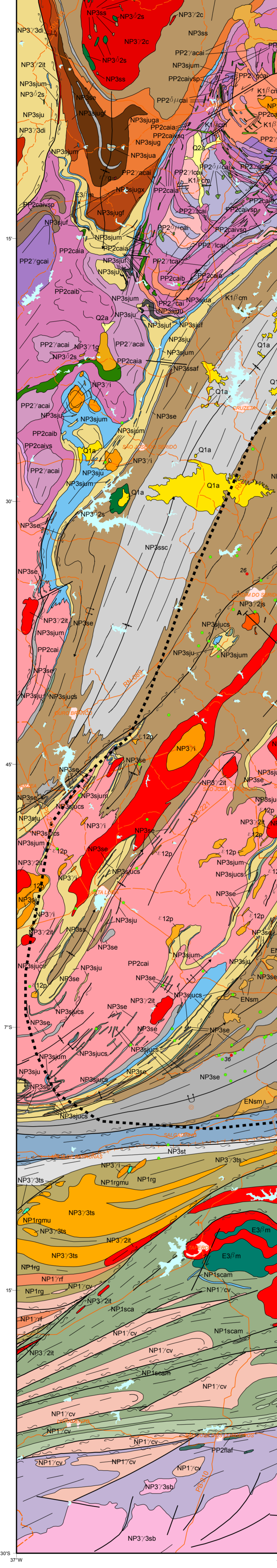
ENCARTE TECTÔNICO



LEGENDA
Coberturas Ferozoicas
Granitos Brasilianos
DJ - Dominio Jaguaribeano
DPS - Dominio Rio Piranhas-Seridó
DJC - Dominio São José do Campestre
DZT - Dominio da Zona Transversal
DPA - Dominio Pernambuco-Alagoas

Zonas de cisalhamento
1) Pátios 2) Pico-João Câmara 3) Portalegre 4) Pernambuco
Limites de domínios
Intervalos batimétricos (metros)
Cidade
Área do projeto

Fonte: Medeiros (2011).

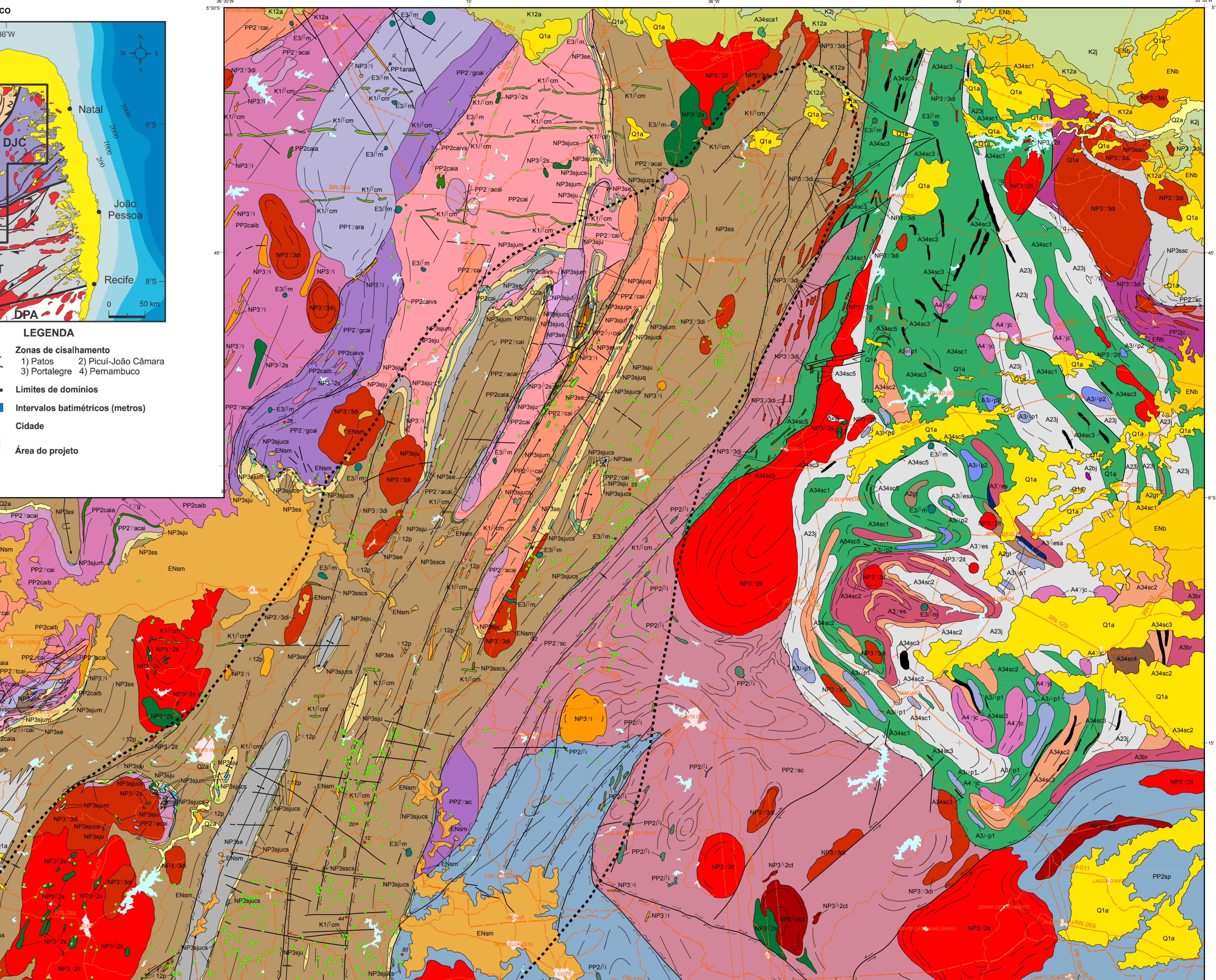


Perfil A-B

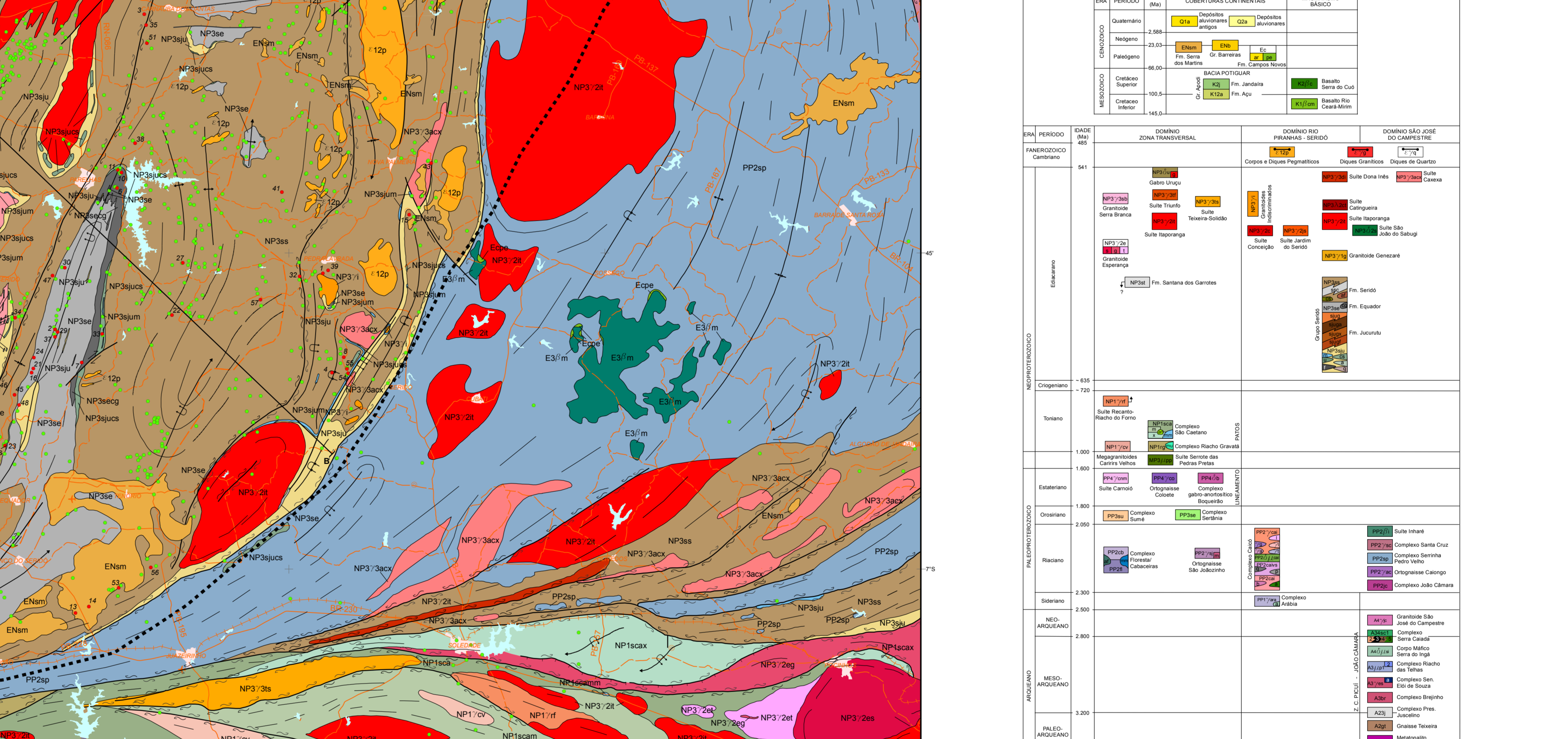


Table with 4 columns: ID, Topografia, Litologia, and Fatores. Lists various geological units and their characteristics.

Table with 4 columns: Convenções Cartográficas, Convenções Geológicas, and Convenções Geográficas. Lists symbols and codes for geological features.



RELAÇÕES TECTONO-ESTRATIGRÁFICAS



UNIDADES LITOESTRATIGRÁFICAS

Large table describing lithostratigraphic units, including names, descriptions, and stratigraphic positions.

MAPA GEOLOGICO E DE RECURSOS MINERAIS DE LITO
PROVÍNCIA PEGMÁTICA DA BORBOREMA
ESCALA 1:250.000