

TECTONIC-GEOCHRONOLOGICAL MAP OF THE STATE OF BAHIA

- METALLOGENETIC IMPLICATIONS

SCALE 1: 1,000,000

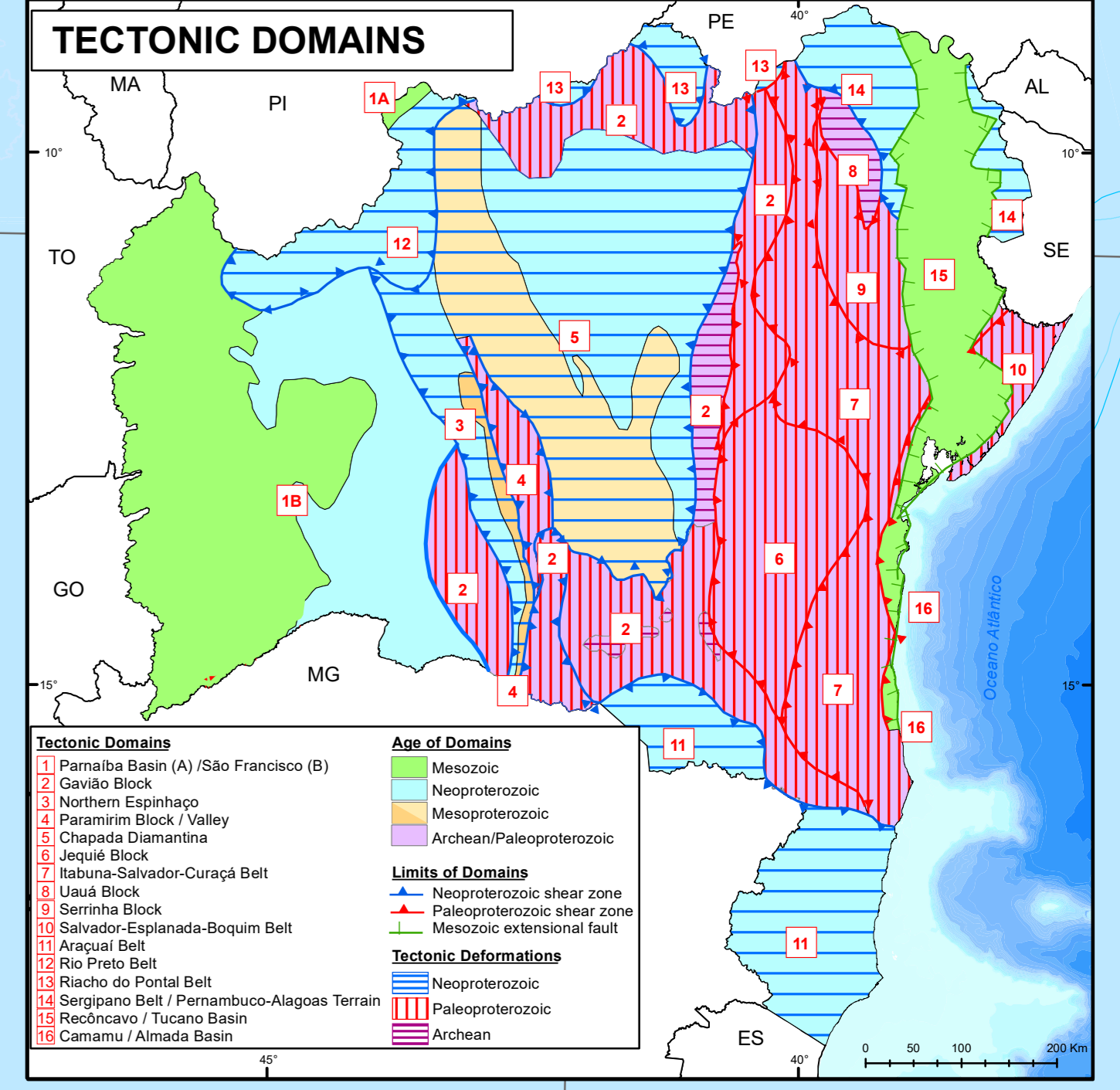
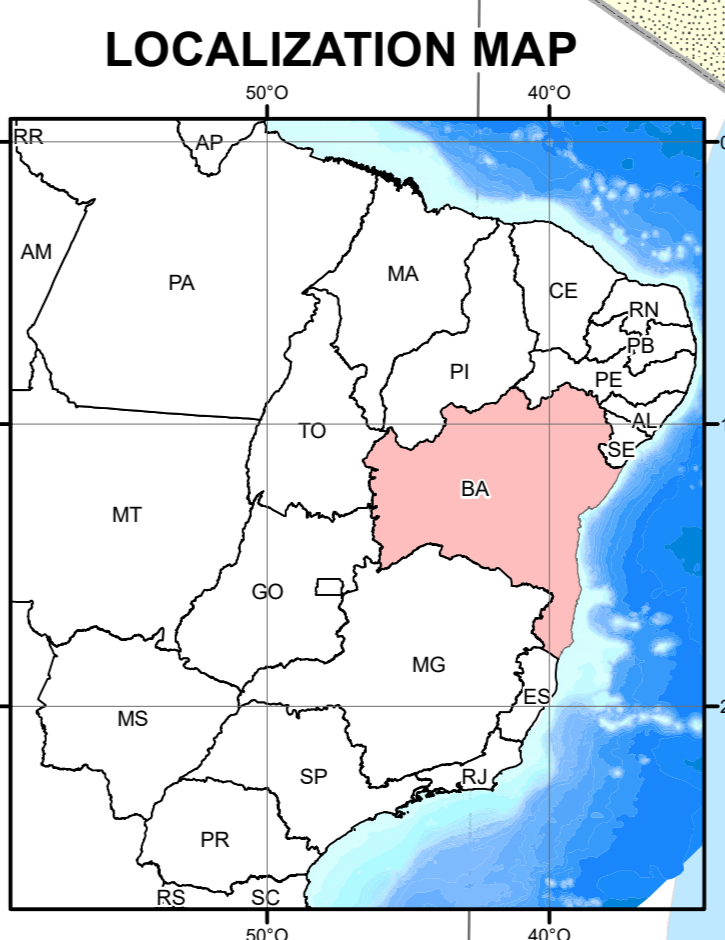
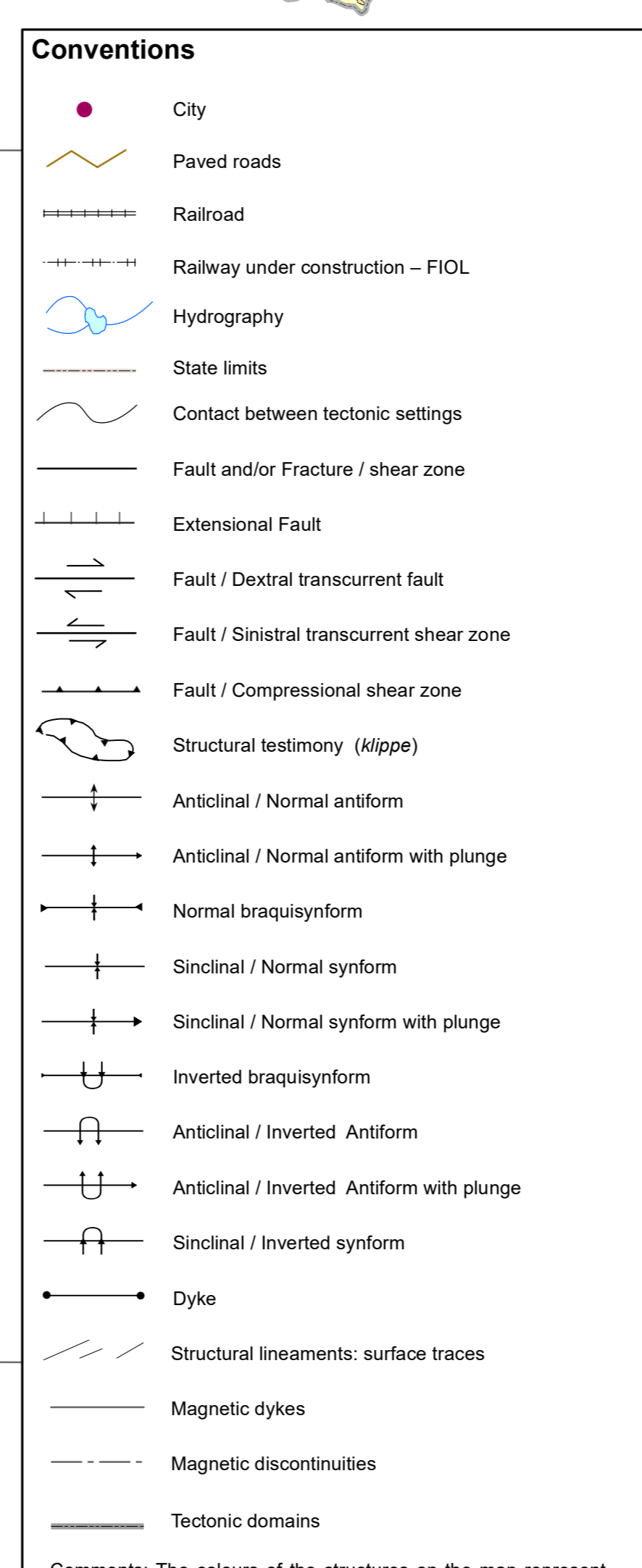
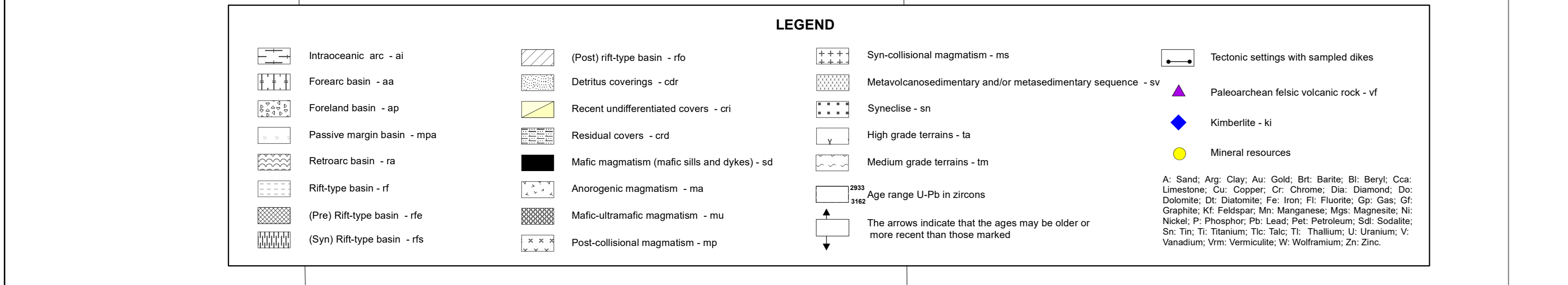
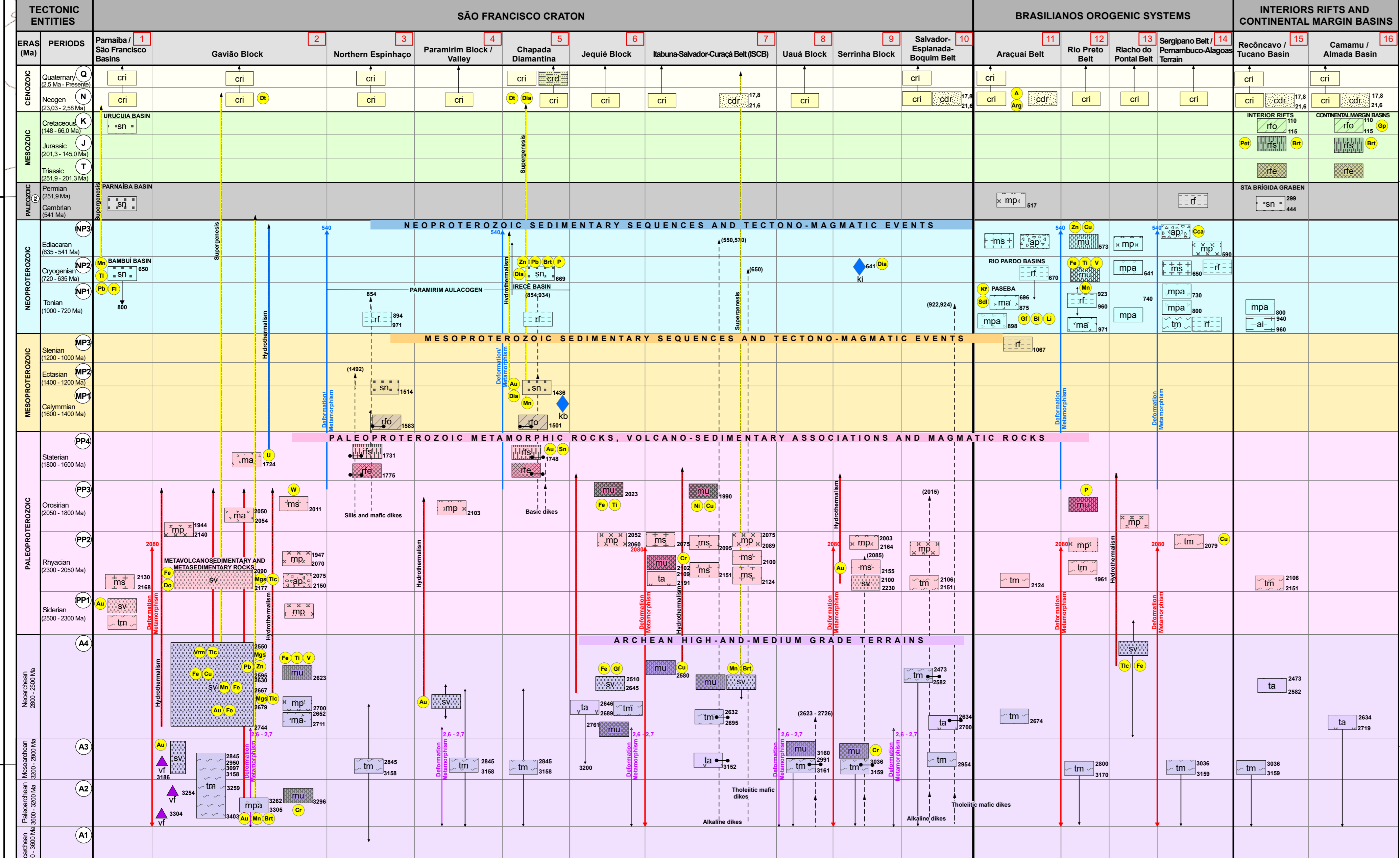
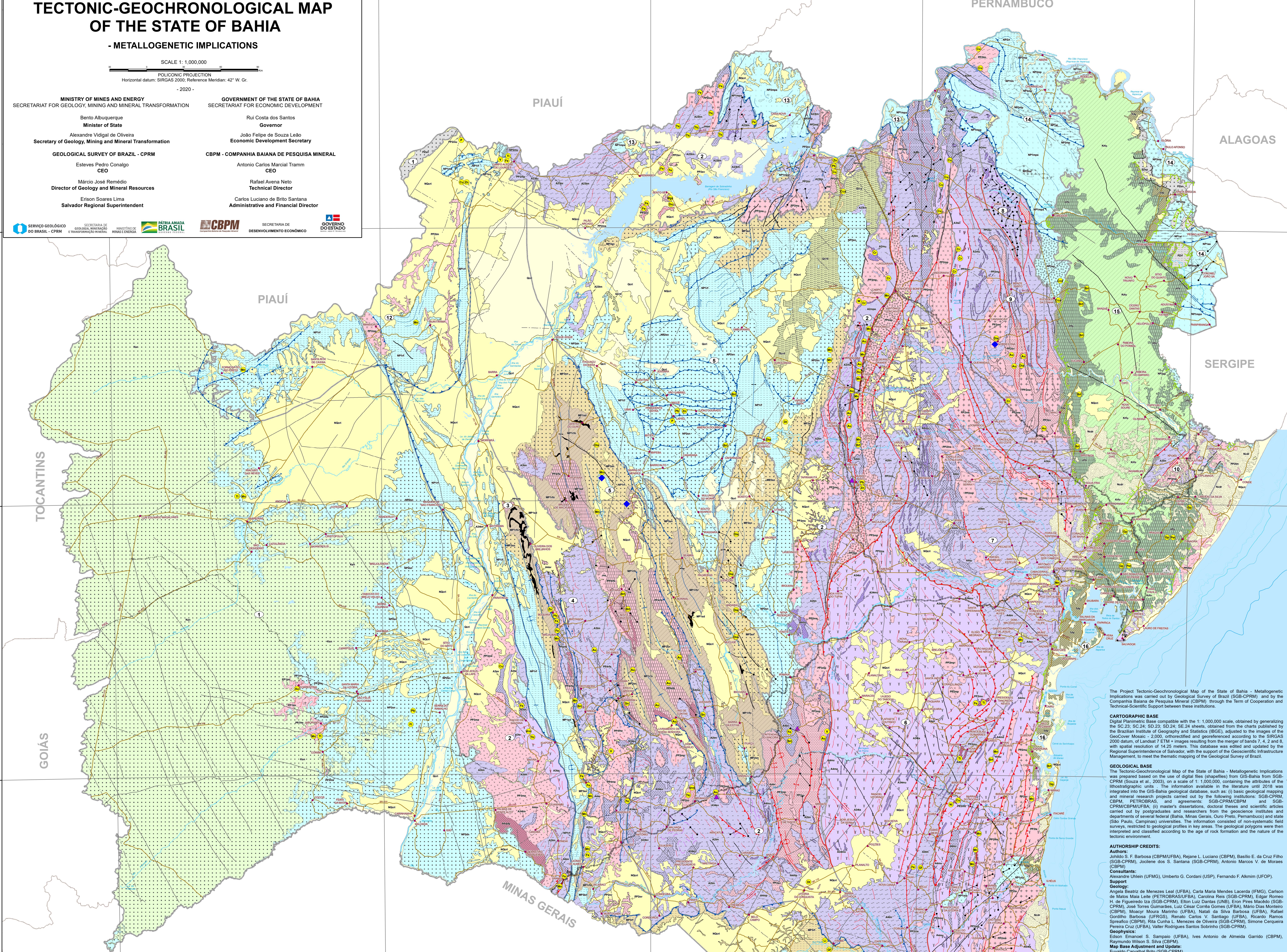
POLICENIC PROJECTION
Horizontal datum: SIRGAS 2000, Reference Meridian: 42° W. Gr.
- 2020 -

MINISTRY OF MINES AND ENERGY
SECRETARIAT FOR GEOLOGY, MINING AND MINERAL TRANSFORMATION
Bento Albuquerque
Minister of State
Alexandre Vidigal de Oliveira
Secretary of Geology, Mining and Mineral Transformation

GOVERNMENT OF THE STATE OF BAHIA
SECRETARIAT FOR ECONOMIC DEVELOPMENT
Rui Costa dos Santos
Governor
João Felipe de Souza Leão
Economic Development Secretary

GEOLOGICAL SURVEY OF BRAZIL - CPRM
Estêves Pedro Conalço
CEO
Márcio José Remédio
Director of Geology and Mineral Resources
Erison Soares Lima
Salvador Regional Superintendent

CBPM - COMPANHIA BAIANA DE PESQUISA MINERAL
Antonio Carlos Marcial Tramm
CEO
Rafael Avena Neto
Technical Director
Carlos Luciano de Brito Santana
Administrative and Financial Director



The Project Tectonic-Geochronological Map of the State of Bahia - Metallogenic Implications was carried out by Geological Survey of Brazil (SGB-CPRM) and by the Companhia Baiana de Pesquisa Mineral (CBPM) through the Term of Cooperation and Technical-Scientific Support between these institutions.

CARTOGRAPHIC BASE
Digital Planimetric Base compatible with the 1:1,000,000 scale, obtained by generalizing the SC.23, SC.24, SD.23, SD.24, SE.24 sheets, obtained from the charts published by the Brazilian Institute of Geography and Statistics (IBGE), adjusted to the images of the GeoCover Mosaic - 2000, orthorectified and georeferenced according to the SIRGAS 2000 datum, of Landsat 7 ETM+ images resulting from the merge of bands 7, 4, 2 and 6, with spatial resolution of 14.25 meters. This database was edited and updated by the Regional Superintendence of Salvador, with the support of the Geoscientific Infrastructure Management, to meet the thematic mapping of the Geological Survey of Brazil.

GEOLOGICAL BASE
The Tectonic-Geochronological Map of the State of Bahia - Metallogenic Implications was prepared based on the use of digital files (shapefiles) from GIS-Bahia from SGB-CPRM (Souza et al., 2003), on a scale of 1:1,000,000, containing the attributes of the lithostratigraphic units - the information available in the literature until 2015 was integrated into the GIS-Bahia geological database, such as: (i) basic geological mapping and mineral research projects carried out by the following institutions: SGB-CPRM, CBPM, PETROBRAS and agreements: SGB-CPRM/CBPM and SGB-CPRM/UFBA; (ii) master's dissertations, doctoral theses and scientific articles carried out by postgraduates and researchers from the geoscience institutes and departments of several Federal (Bahia, Minas Gerais, Ouro Preto, Pernambuco) and state (São Paulo, Ceará) universities. The information consisted of non-systematic field surveys, restricted to geological profiles in key areas. The geological polygons were then interpreted and classified according to the age of rock formation and the nature of the tectonic environment.

AUTHORSHIP CREDITS:
Authors: João S. F. Barbosa (CBPM/UFBA), Rejane L. Luciano (CBPM), Basílio E. da Cruz Filho (SGB-CPRM), Joliane dos S. Santana (SGB-CPRM), Antonio Marcos V. de Moraes (CBPM)
Consultants: Alexandre Uchlein (UFMG), Umberto G. Cordani (USP), Fernando F. Alkmim (UFOP)
Support Geology: Angélica Beatriz de Menezes Leal (UFBA), Carla Maria Mendes Lacerda (FMG), Carlson de Mello Maia Leão (PETROBRAS/UFBA), Carolina Reis (SGB-CPRM), Edgley Ribeiro H. da Figueiredo Iza (SGB-CPRM), Elton Luiz Dantas (UNB), Eron Fries Machado (SGB-CPRM), José Torres Guimarães Luz César Cordeiro Gomes (UFBA), Mano Dias Monteiro (CBPM), Moacyr Moura Matinho (UFBA), Natália da Silva Barbosa (UFBA), Rafael Gorilho Barbosa (UFPGS), Renato Carlos V. Santiago (UFBA), Ricardo Ramos Sponchião (CBPM), Rita Cunha L. Menezes de Oliveira (SGB-CPRM), Simone Cecília Pereira Cruz (UFBA), Valter Rodrigues Santos Sobrinho (SGB-CPRM)
Geophysicists: Edson Emanuel S. Sampaio (UFBA), Ives Antonio de Almeida Garrido (CBPM), Raimundo Wilson S. Silva (CBPM)
Map Base Adjustment and Update: Edivaldo Carnevali Brito (SGB-CPRM)
Digital Cartography and Layout: Davi C. Grilo, Elaine A. Barbosa de Souza (CBPM), Euvádo Carnevali Brito (SGB-CPRM), Joliane dos S. Santana (SGB-CPRM)
Technical Assistants CBPM: Francinaldo da Silva, José Roberto Dias
Interns/CBPM: Livia Sacramento, Francine Pereira, Aldo Perrotti, Jasmim Cruz, Tarsila de Jesus e Gamile Regis
Translation to English: Paulo Henrique Macedo Varão, Rafael Gonçalves Barbosa, Antonio Marcos V. de Moraes
Overall Coordination: João Salomão de Figueiredo Barbosa
Technical Coordination: SGB - CPRM
DEGEI: Lúcia Travenço da Rosa Costa
DEREM: Marcelo Estevão Almeida
DIGEOR: Vladimir Cruz de Medeiros
GEMEM: Valter Rodrigues Santos Sobrinho
Technical Supervision: Basílio Estelbo da Cruz Filho, Edgar R. H. de Figueiredo Iza
CBPM
GEBAP: Ricardo Ramos Sponchião
CEPRG: Lúcia Travenço da Rosa Costa
GEMAM: Albert Hartmann
GERED: Lailson Dourado Ribeiro
SEGEI: Eliane Barbosa Almeida de Souza
SEGET: Tereza Cristina Brito Ramos
Citation: Barbosa et al., 2020
Reference: BARBOSA, S.F.F.; LUCIANO, R.L.; CRUZ FILHO, B.E.; SANTANA, J.S.; MORAES, A.M.V. Mapa Tectônico-Geocronológico do Estado da Bahia - Implicações Metallogênicas. Salvador: SGB-CPRM, CBPM, 2020. 1 mapa, color. Escala 1:1.000.000. Programa Geologia, Mineração e Transformação Mineral. (Série publicações especiais, 24). Acordo de Cooperação Técnico-Científica SGB-CPRM/CBPM.
Legal Notice: Legal Notice: The content made available on this map ("Content") was prepared by SGB-CPRM/CBPM based on data obtained through its own works and information in the public domain. The institutions do not guarantee: (i) that the Content meets or adapts to the needs of all users; (ii) that the Content and access to it are completely free from failures; (iii) the total accuracy of any data or information contained in the Content, despite the precautions taken by the institutions. Thus, SGB-CPRM/CBPM, its representatives, officers, employees and shareholders cannot be held responsible for any inconsistencies or omissions contained in the Content. Institutions suggest that users use their experience in handling the information contained in the Content, or seek advice from independent professionals capable of evaluating the information contained therein. The Content does not constitute investment, financial, tax or legal advice, nor does it provide recommendations regarding instruments for geoscientific analysis, investments or possible products. Finally, any work, study and/or analysis that uses the Content must make the appropriate bibliographic reference.