

SUBSTÂNCIAS REQUERIDAS - ANM

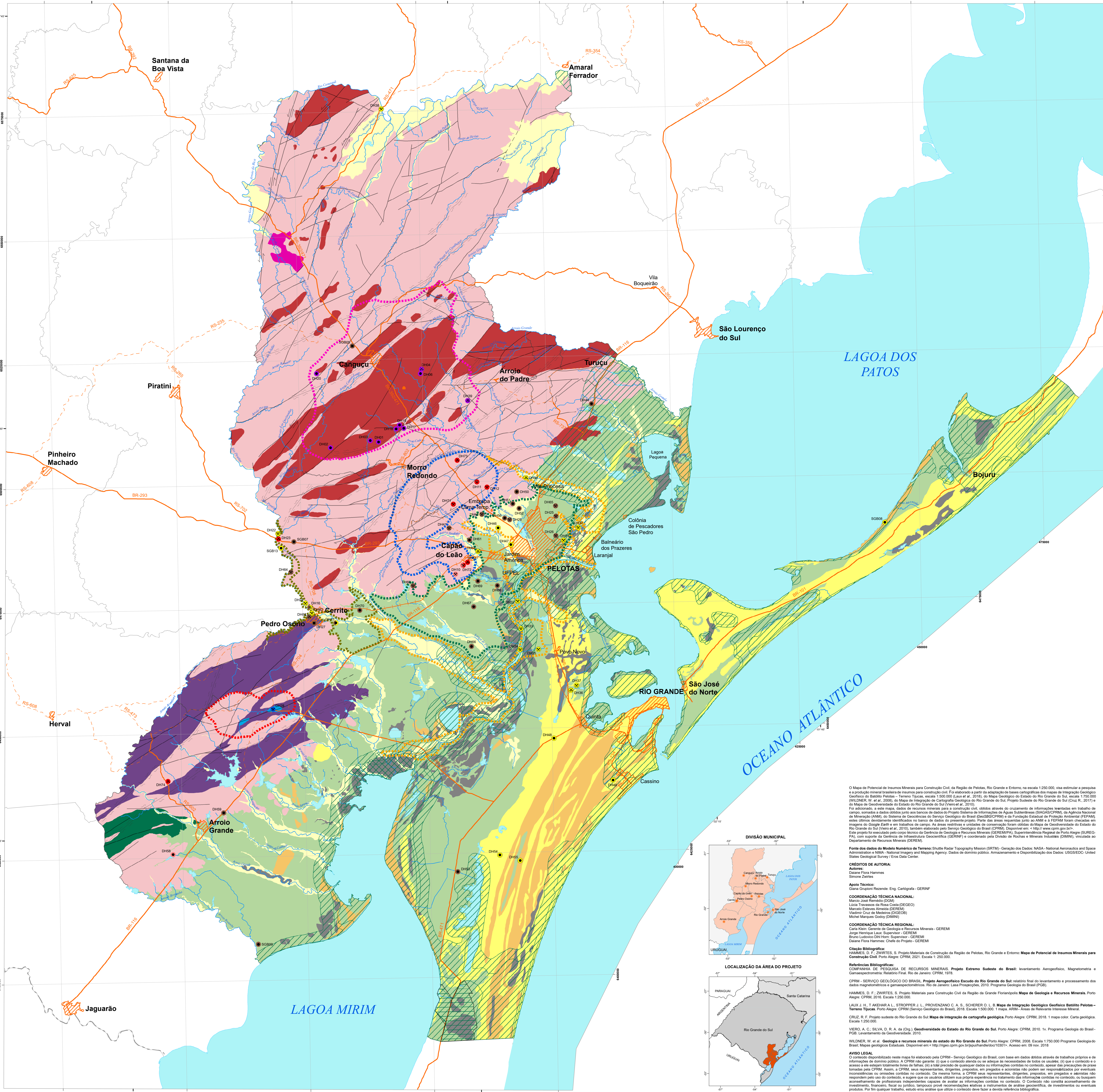
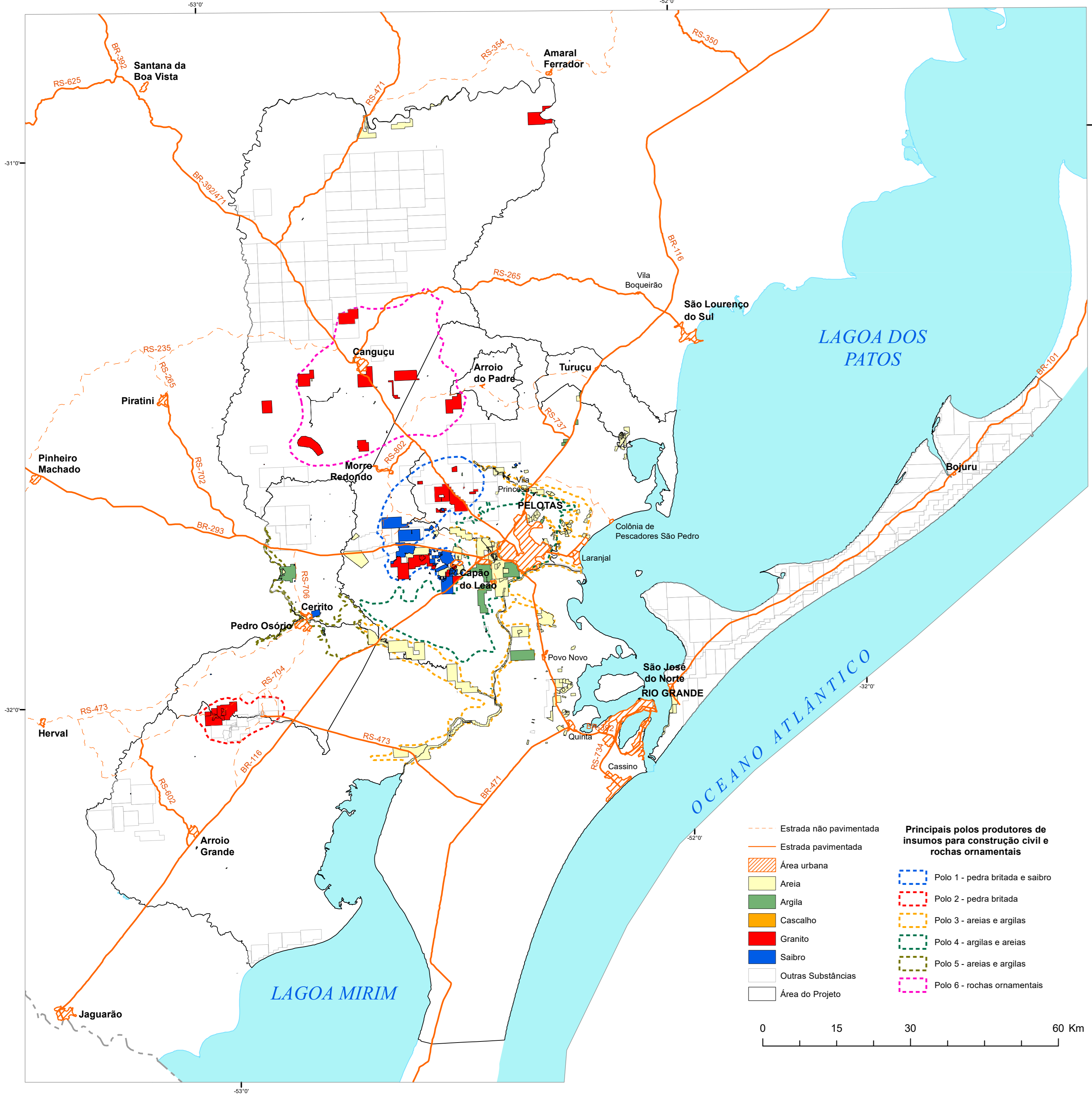


Table with 11 columns: Classes, Litologias, Insumos principais, Área, Argila, Brita, Areia, Cascalho, Rocha ornamental. It lists various geological classes and their associated materials.

Observação: * potencial contaminação salina.

Table with 4 columns: INSUMO, TIPOLOGIA, CARACTERÍSTICAS, USO. It details the characteristics and uses of various construction materials like sand, gravel, and brick.

Principais pólos produtores de insumos para construção civil e rochas ornamentais

- List of key production poles for construction materials and ornamental rocks, including locations like Pelotas, Rio Grande, and São José do Norte.

Tables for geological and cartographic conventions. Geological conventions include fault types and zones. Cartographic conventions include symbols for indigenous areas, roads, and water bodies.

Tables for mineral resources and environmental protection areas. Mineral resources table lists types like sand and gravel. Environmental protection areas table lists categories like Ecological Station and Biosphere Reserve.

Tables for economic status and situation. Economic status table lists mineral deposits. Situation table lists economic activities like mining and agriculture.

MATERIAIS DE CONSTRUÇÃO DA REGIÃO DE PELOTAS, RIO GRANDE E ENTORNO



Technical notes and credits for the map. Includes contact information for the project, a list of authors and technical coordinators, and a disclaimer.