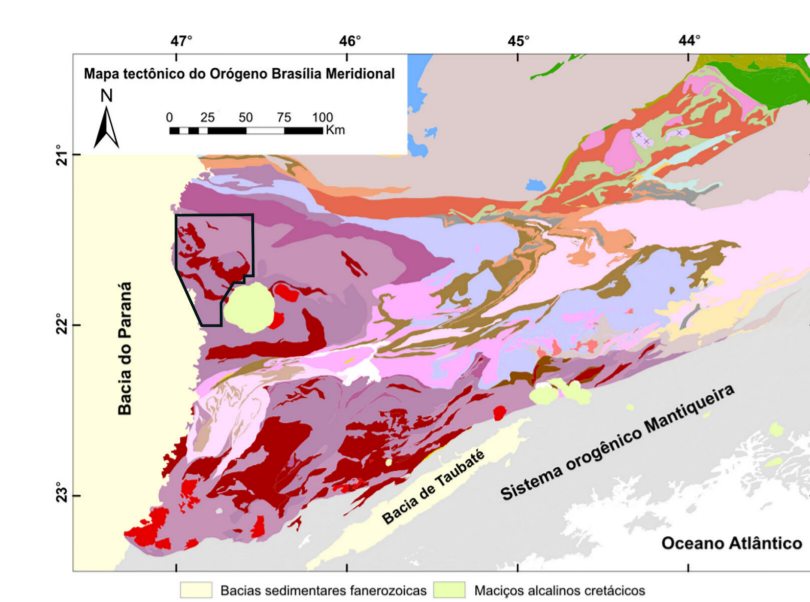


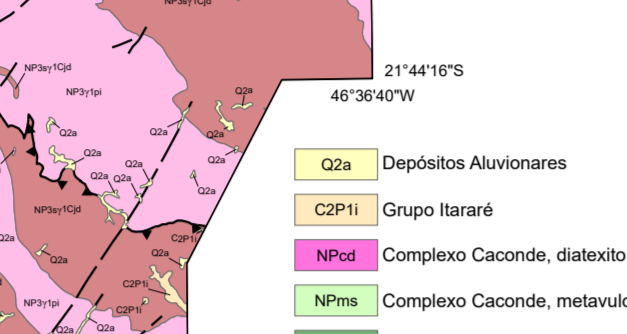
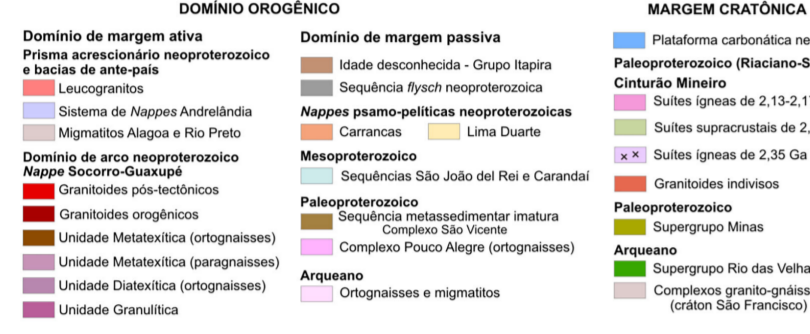
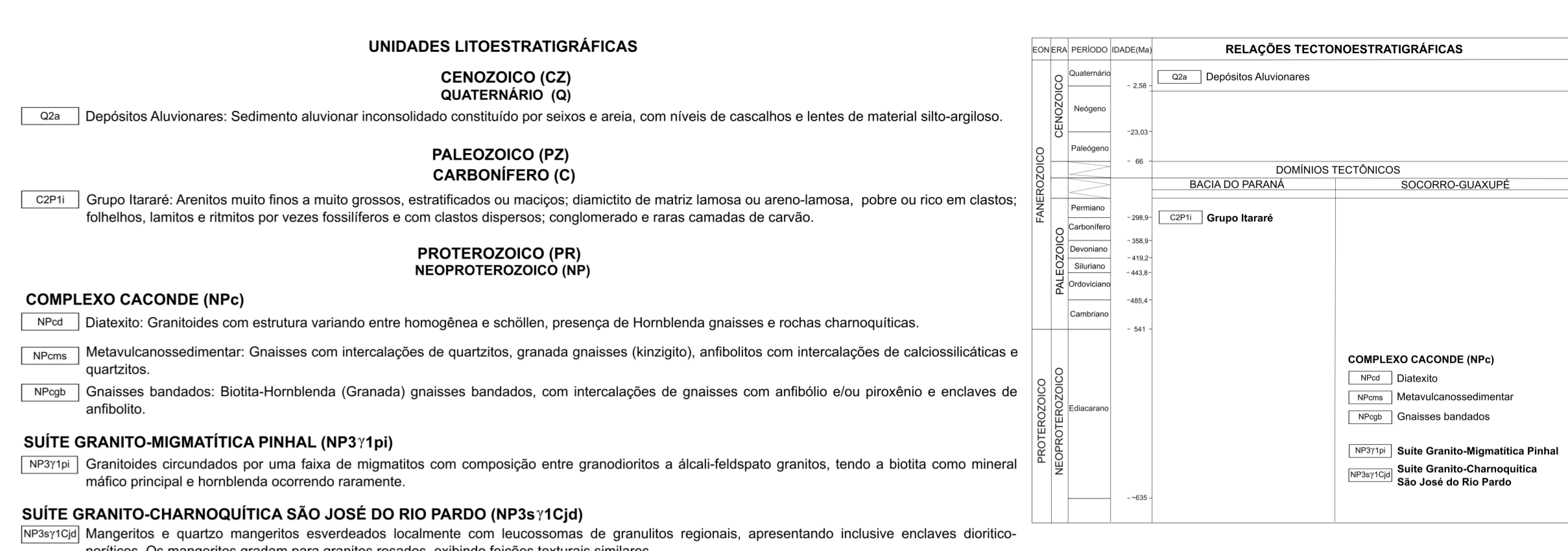
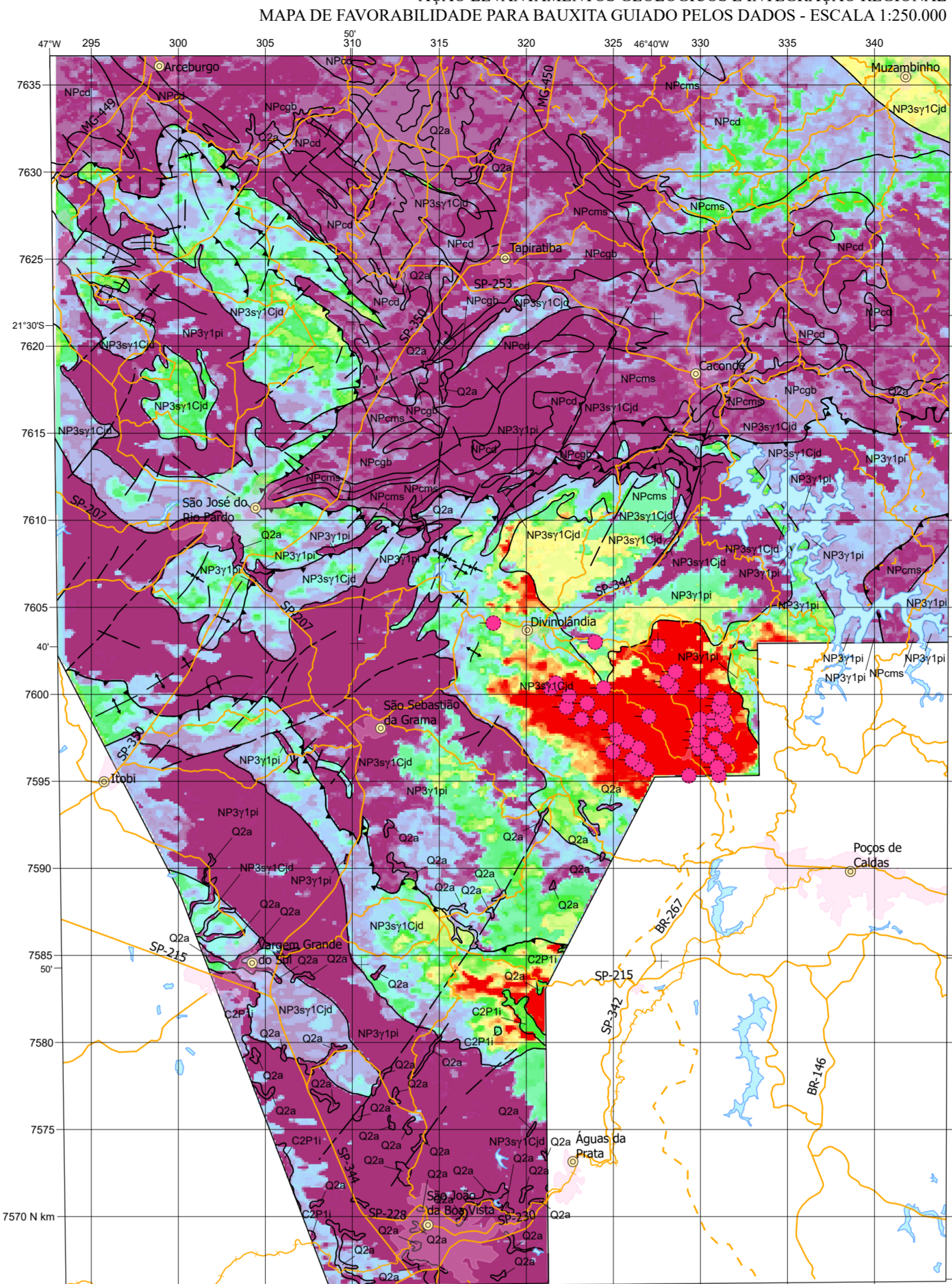
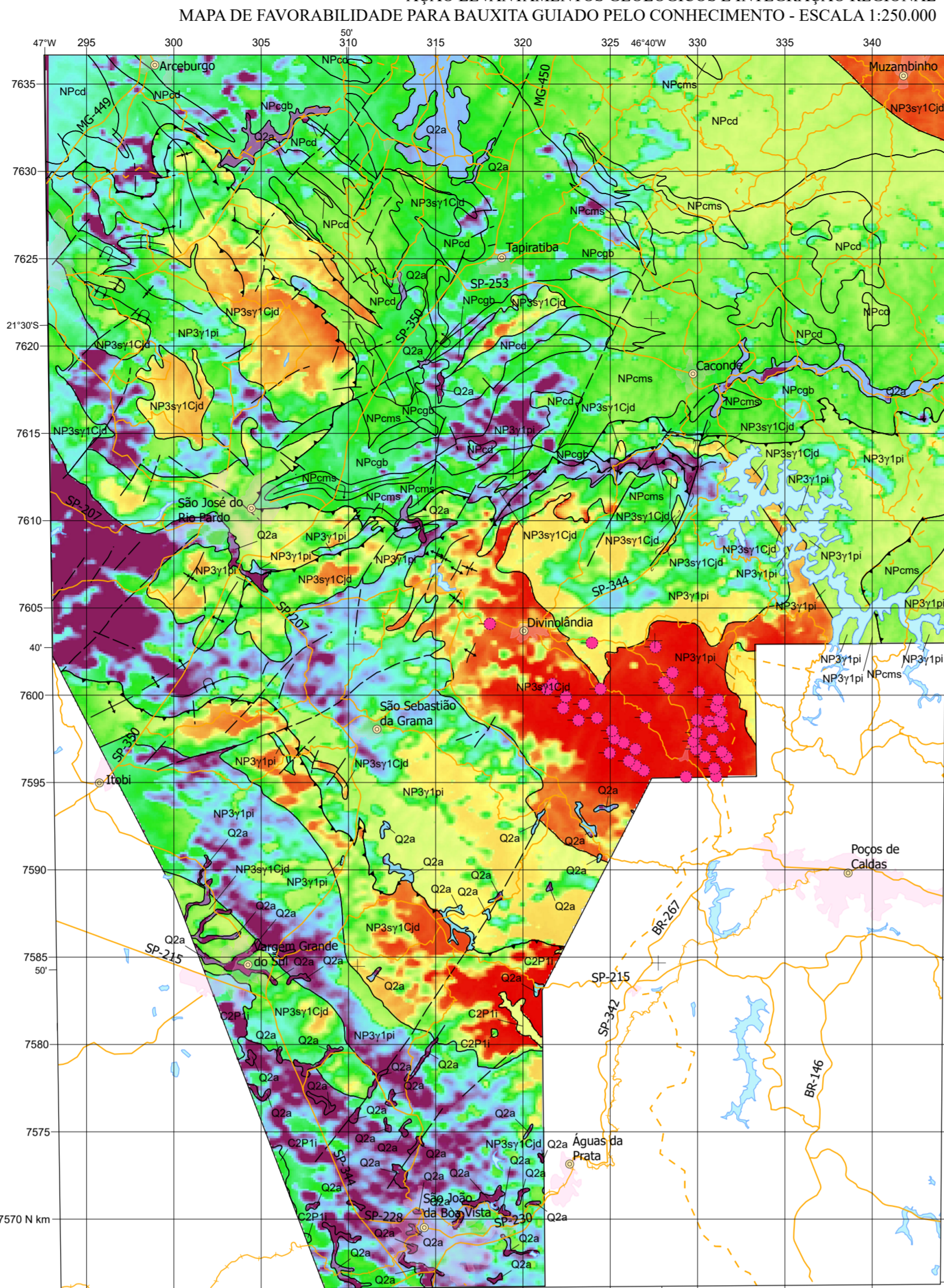
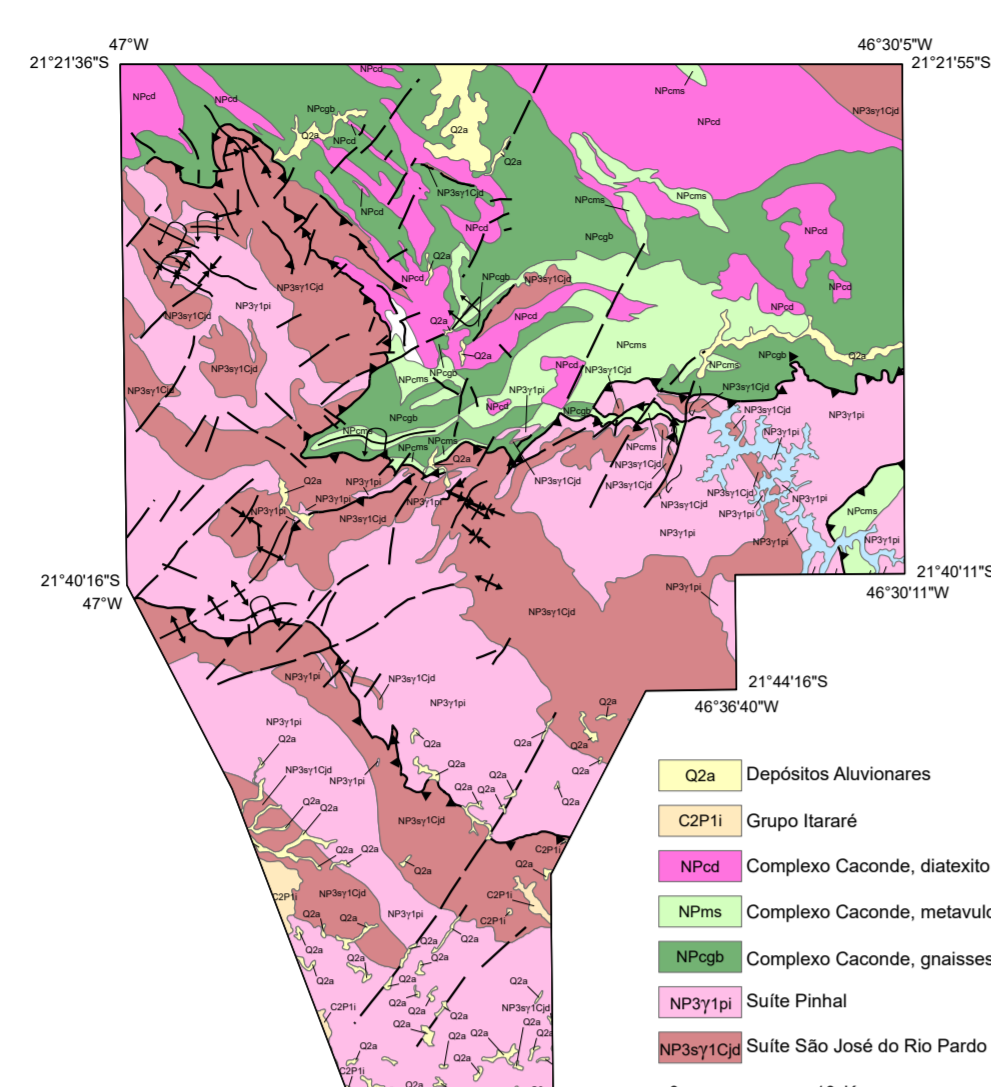
PROGRAMA GEOLOGIA, MINERAÇÃO E TRANSFORMAÇÃO MINERAL
AÇÃO LEVANTAMENTOS GEOLÓGICOS E INTEGRAÇÃO REGIONAL
MAPA DE FAVORABILIDADE PARA BAUXITA GUIADO PELO CONHECIMENTO - ESCALA 1:250.000

PROGRAMA GEOLOGIA, MINERAÇÃO E TRANSFORMAÇÃO MINERAL
AÇÃO LEVANTAMENTOS GEOLÓGICOS E INTEGRAÇÃO REGIONAL
MAPA DE FAVORABILIDADE PARA BAUXITA GUIADO PELOS DADOS - ESCALA 1:250.000

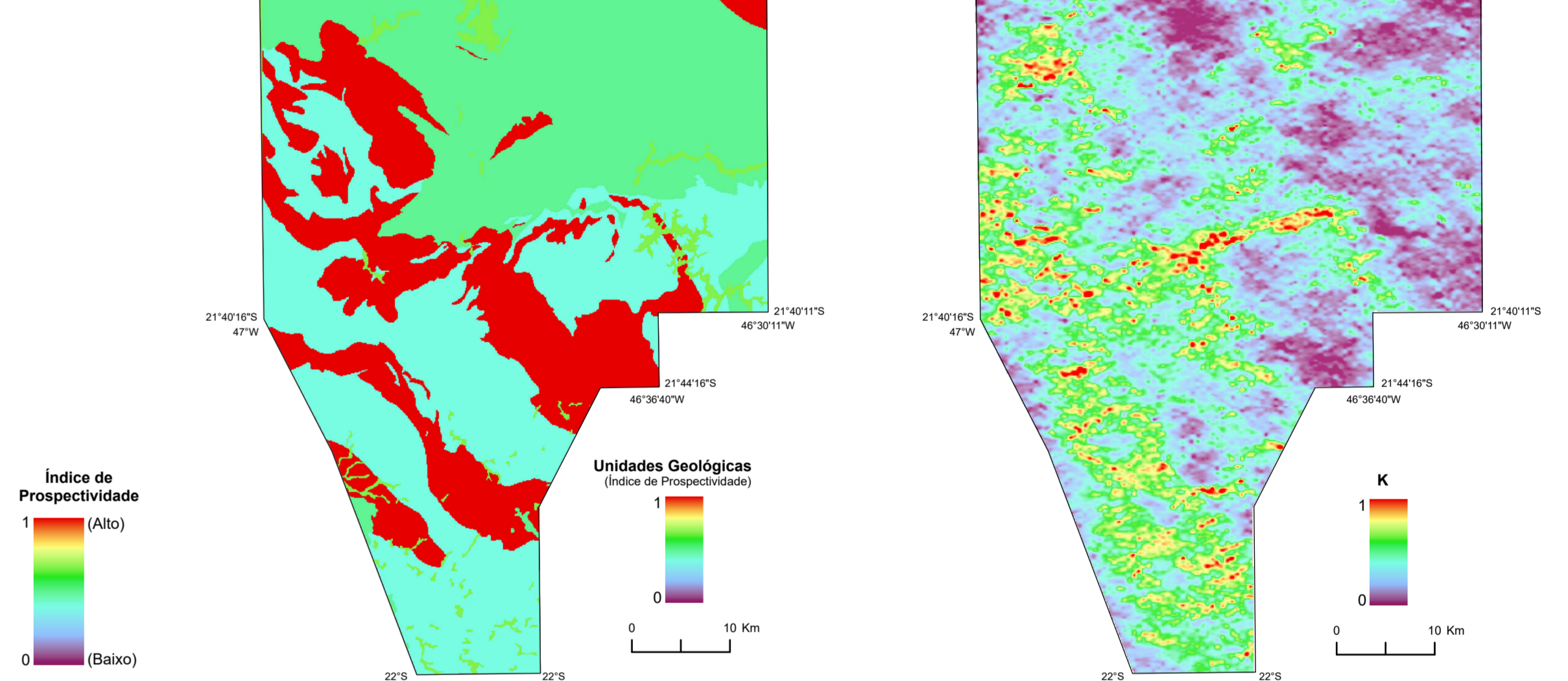
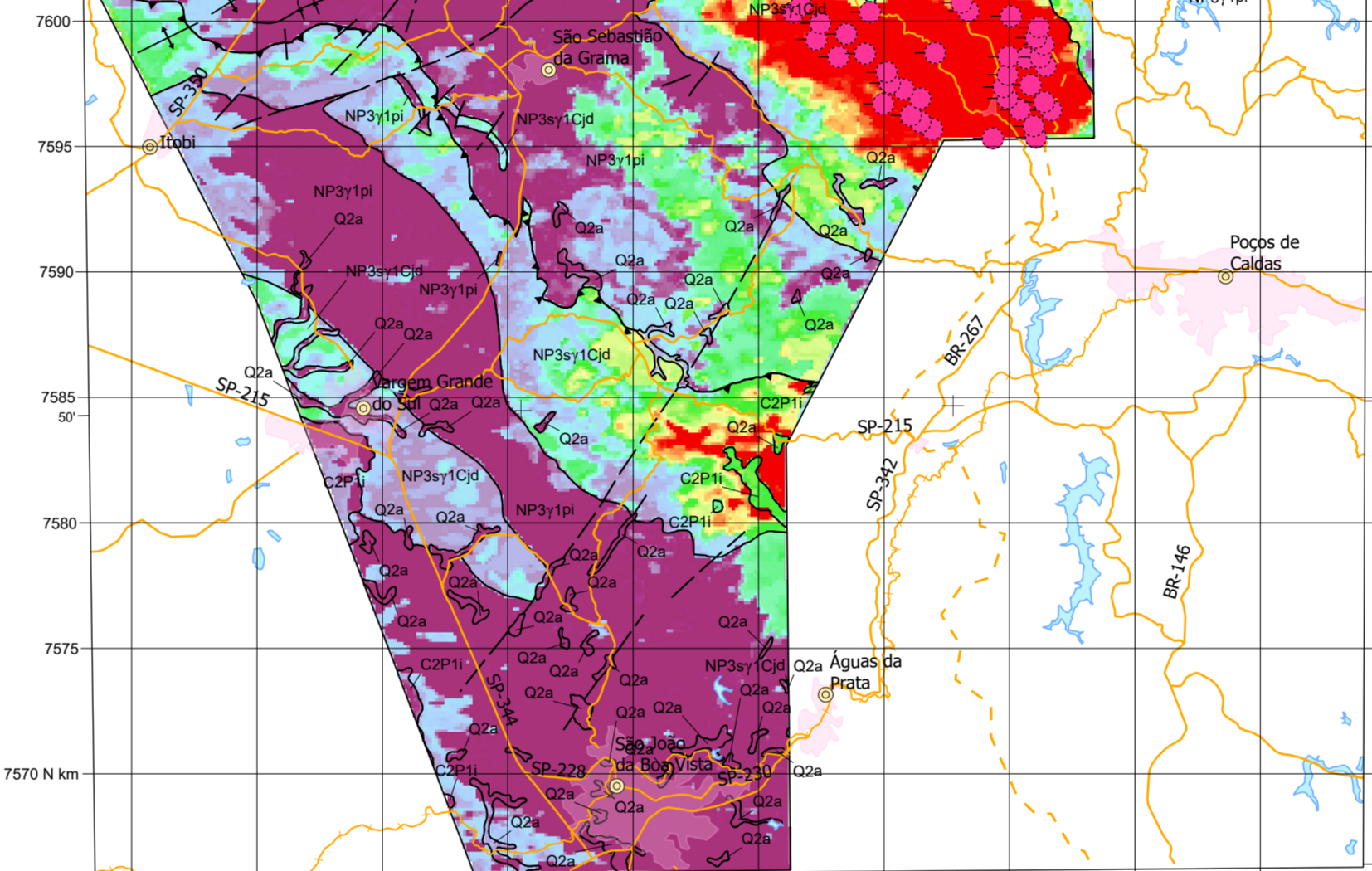
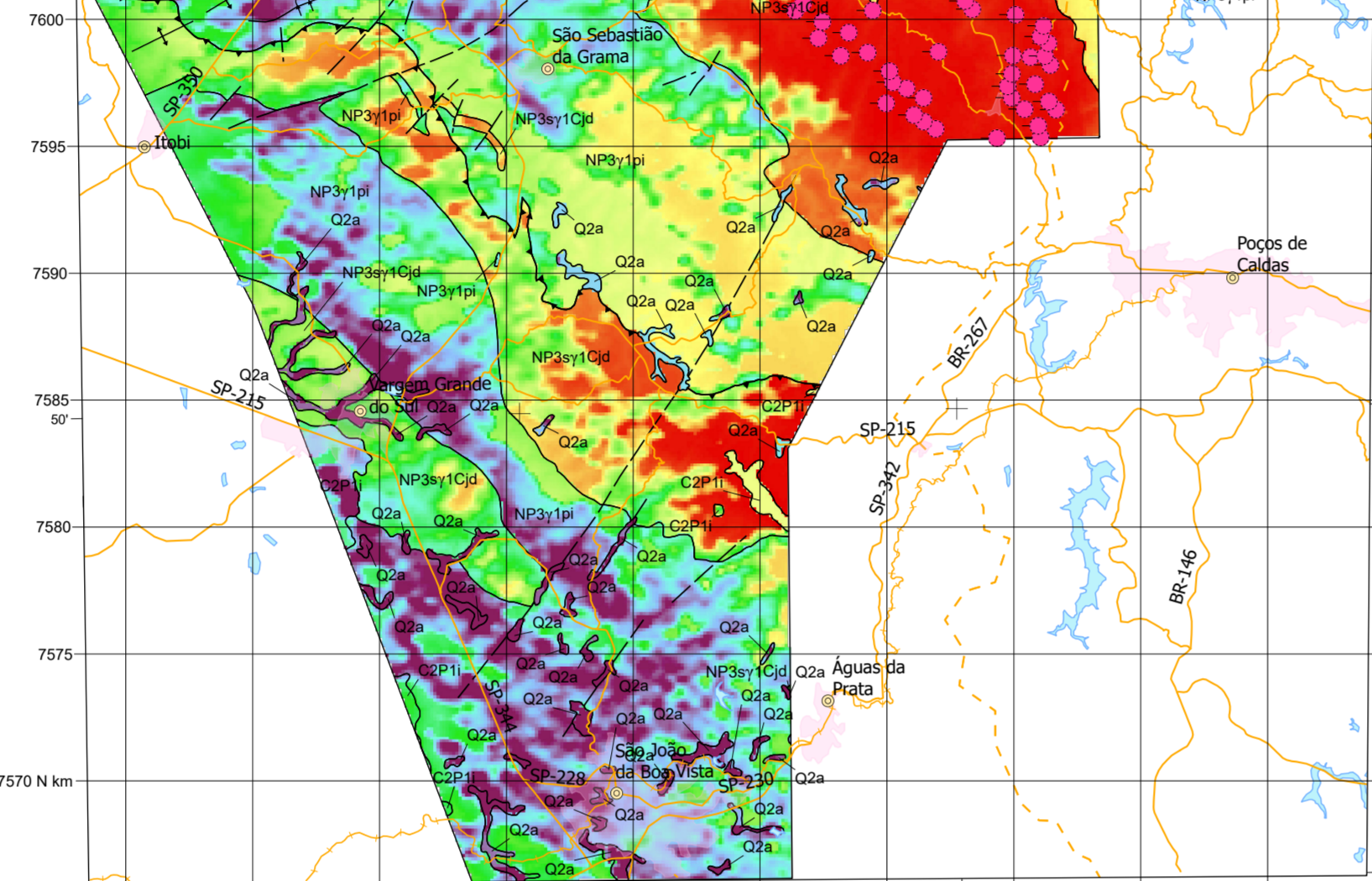
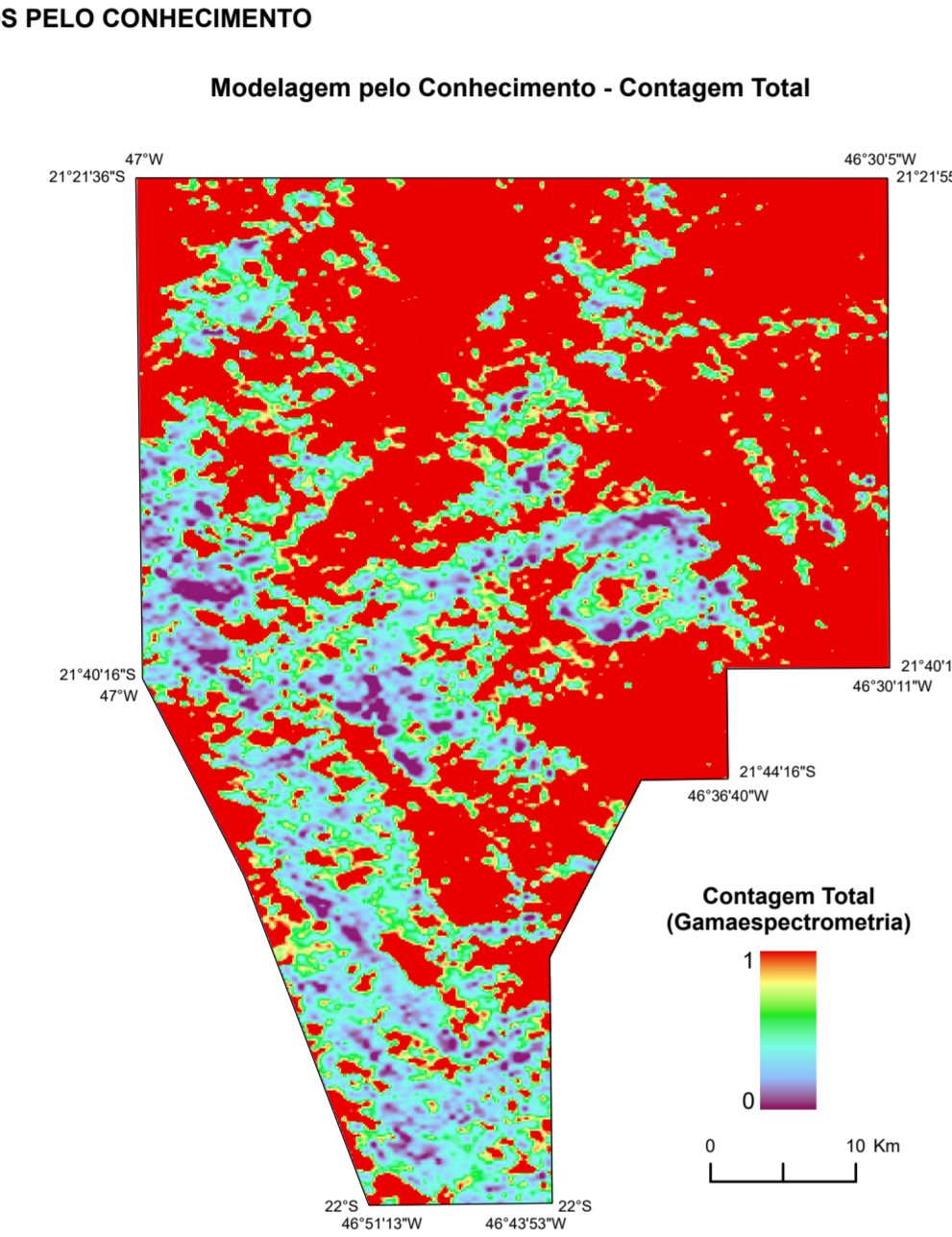
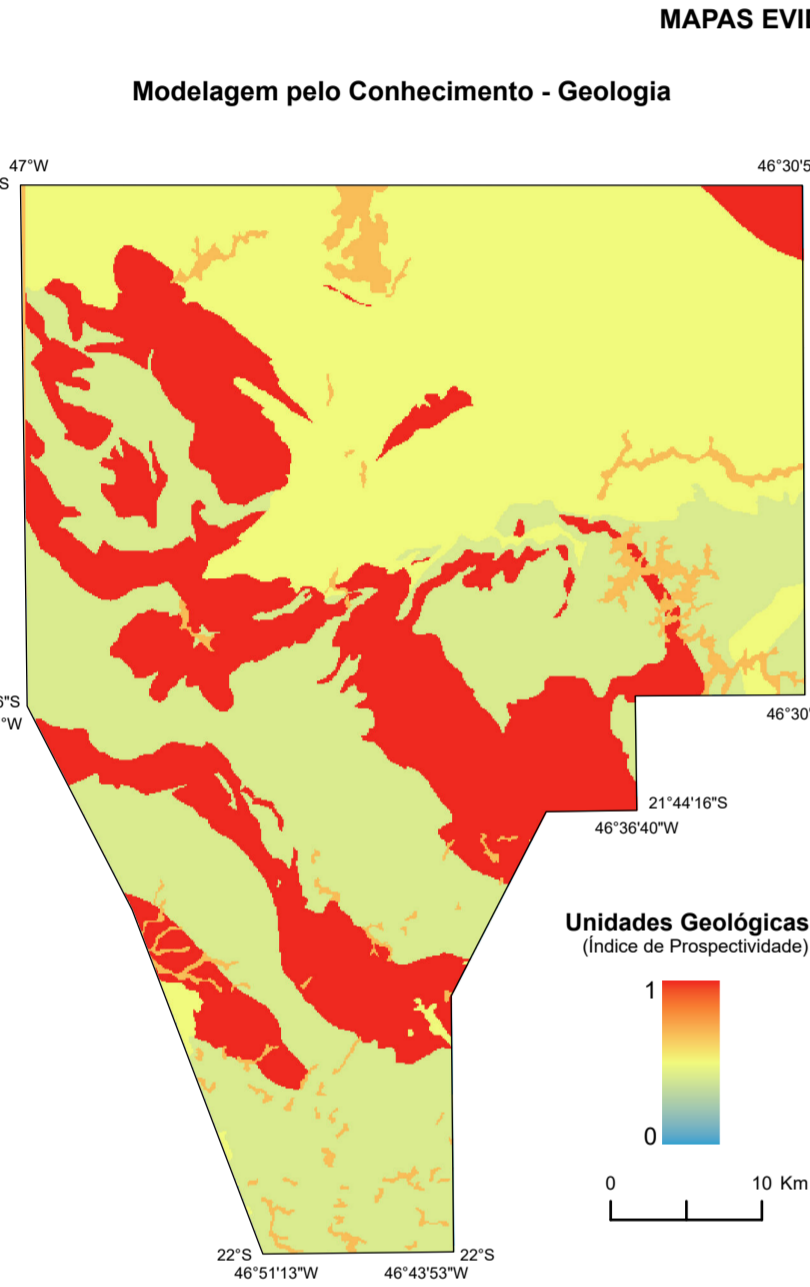
ENCARTE TECTÔNICO



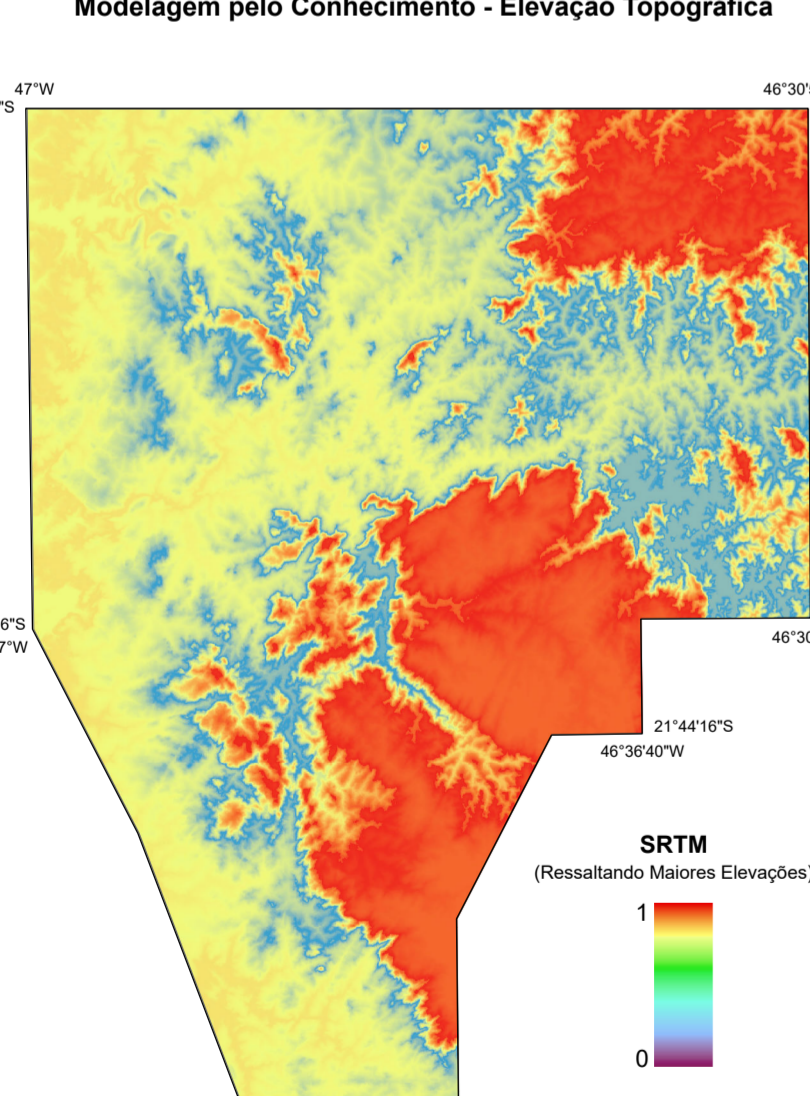
Unidades Geológicas



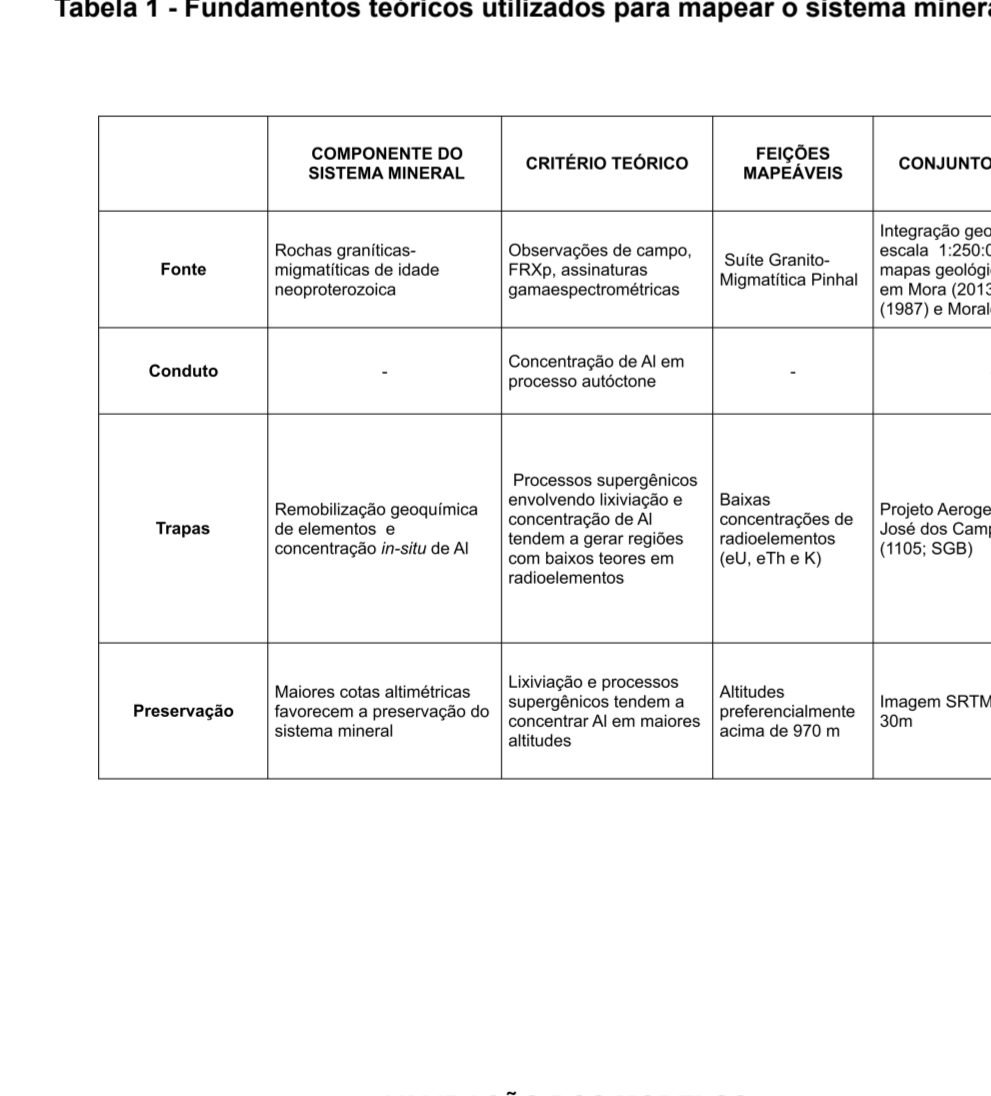
MAPAS EVIDENCIAIS GUIADOS PELO CONHECIMENTO



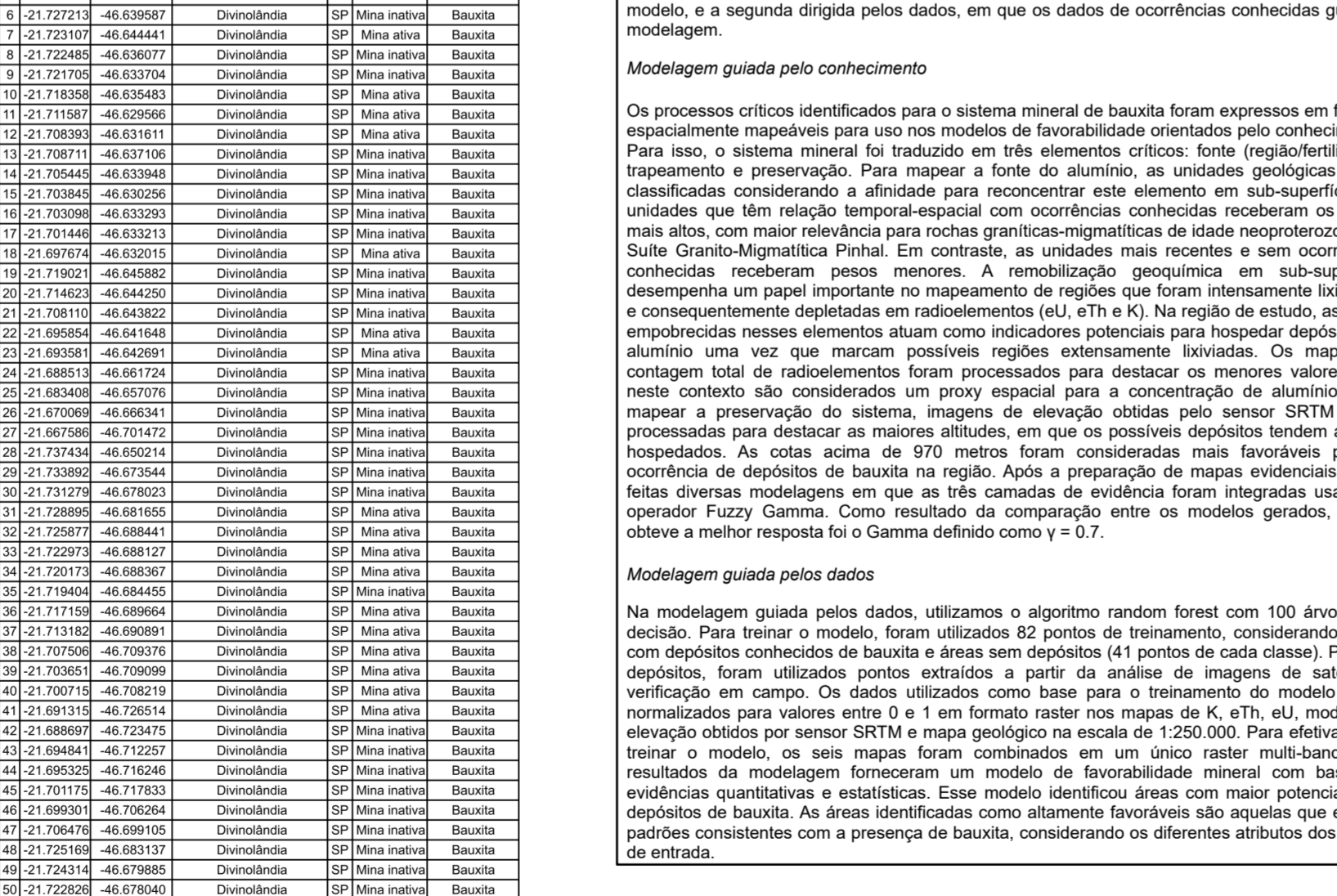
Modelagem pelo Conhecimento - Elevação Topográfica



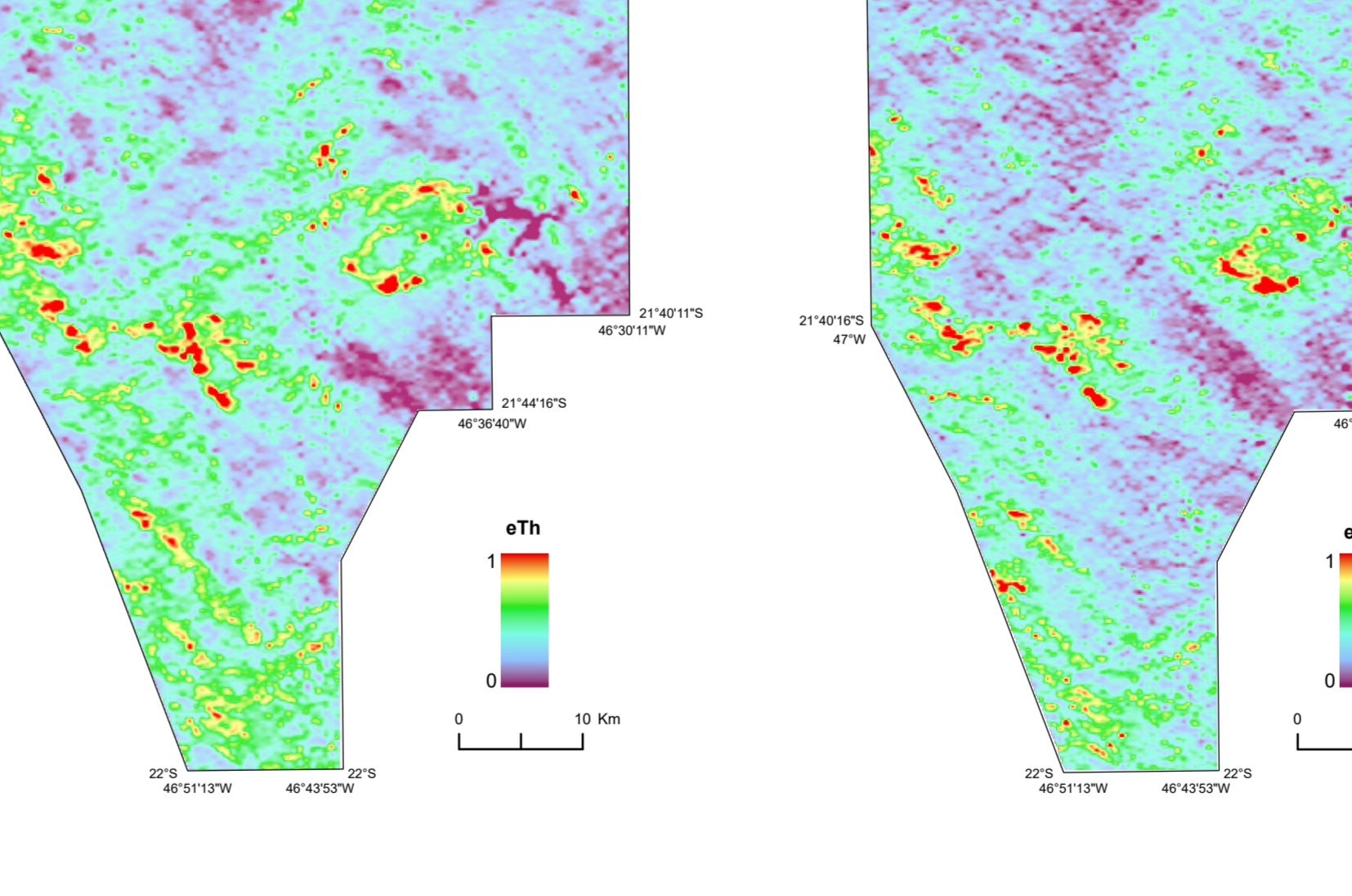
Modelagem pelo Conhecimento - Contagem Total



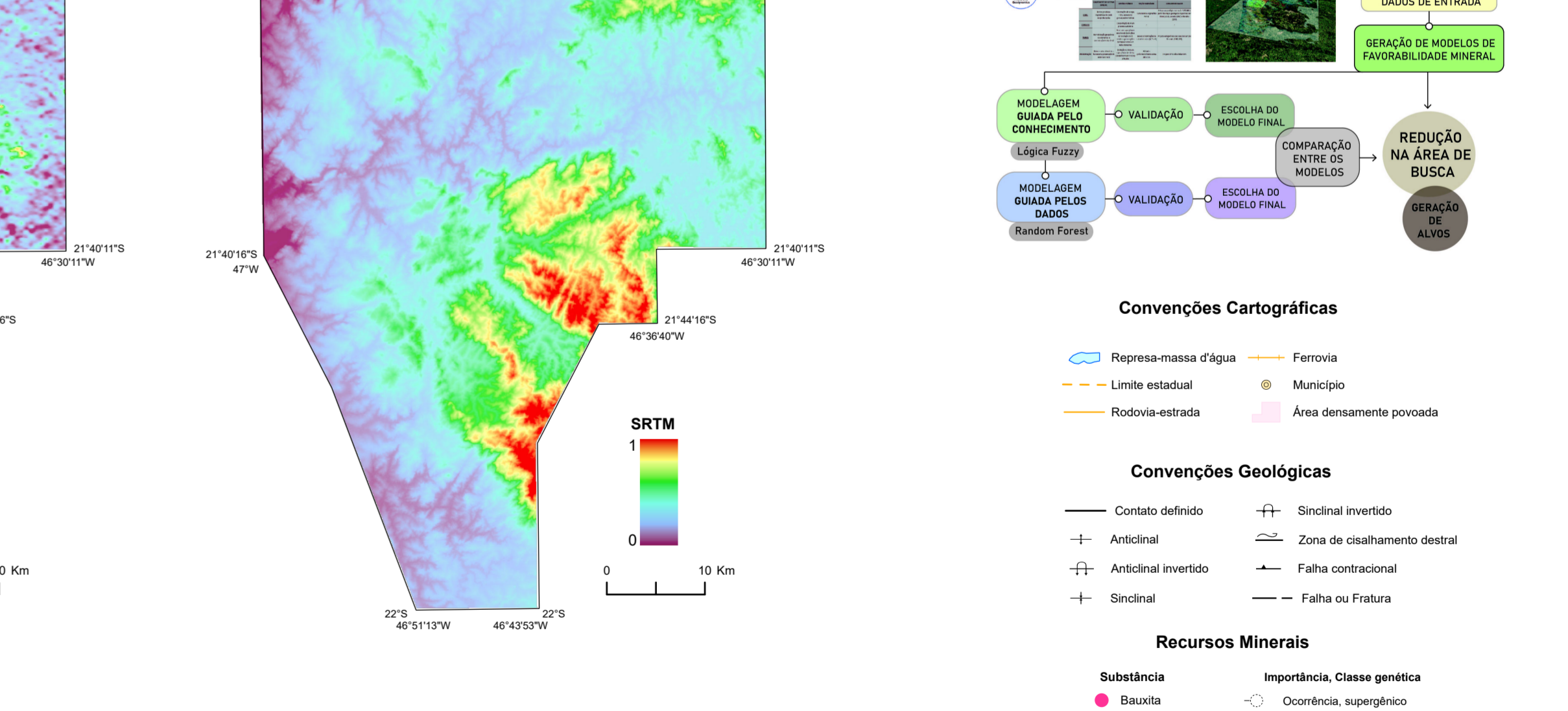
Modelagem pelo Conhecimento - eTh



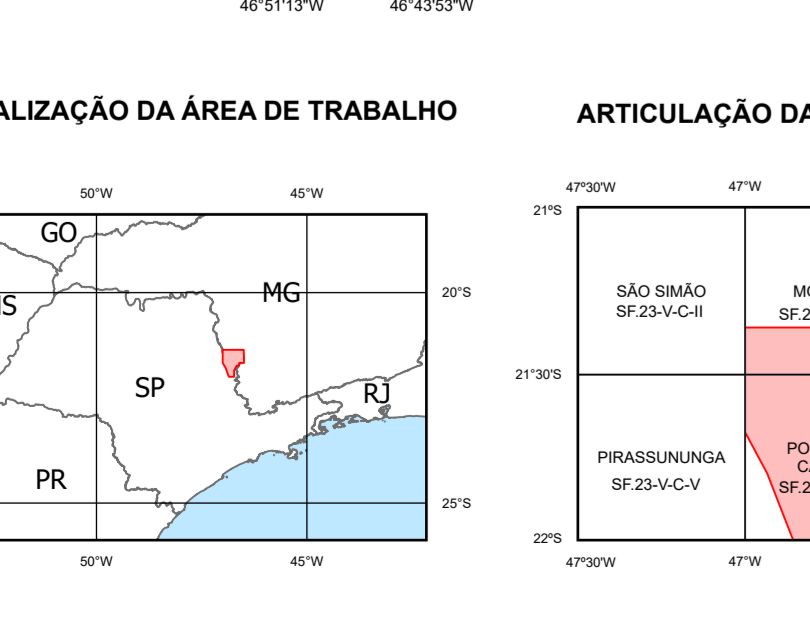
Modelagem pelo Conhecimento - eU



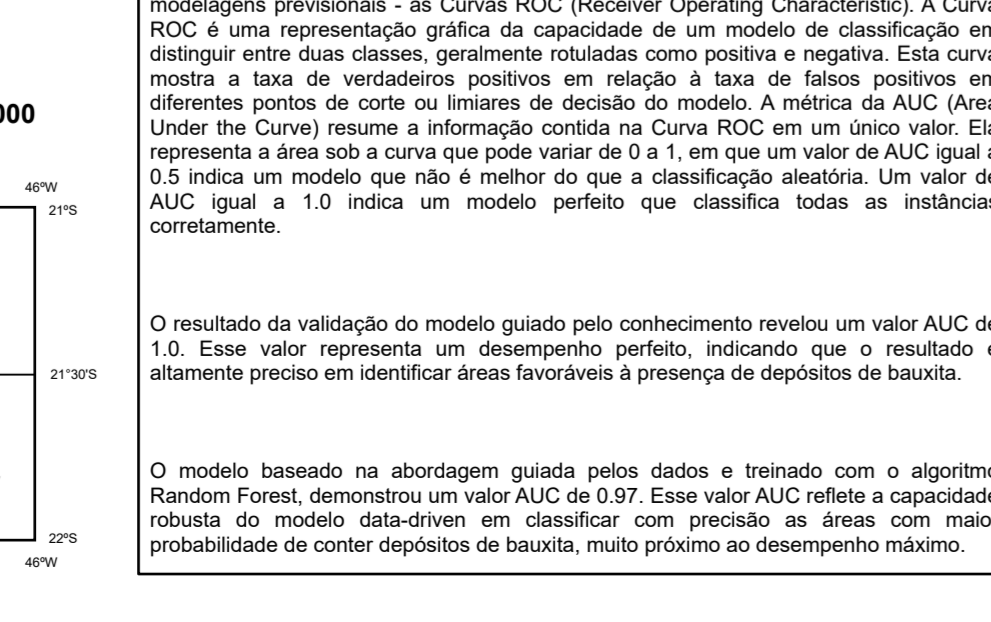
Modelagem pelo Conhecimento - SRTM



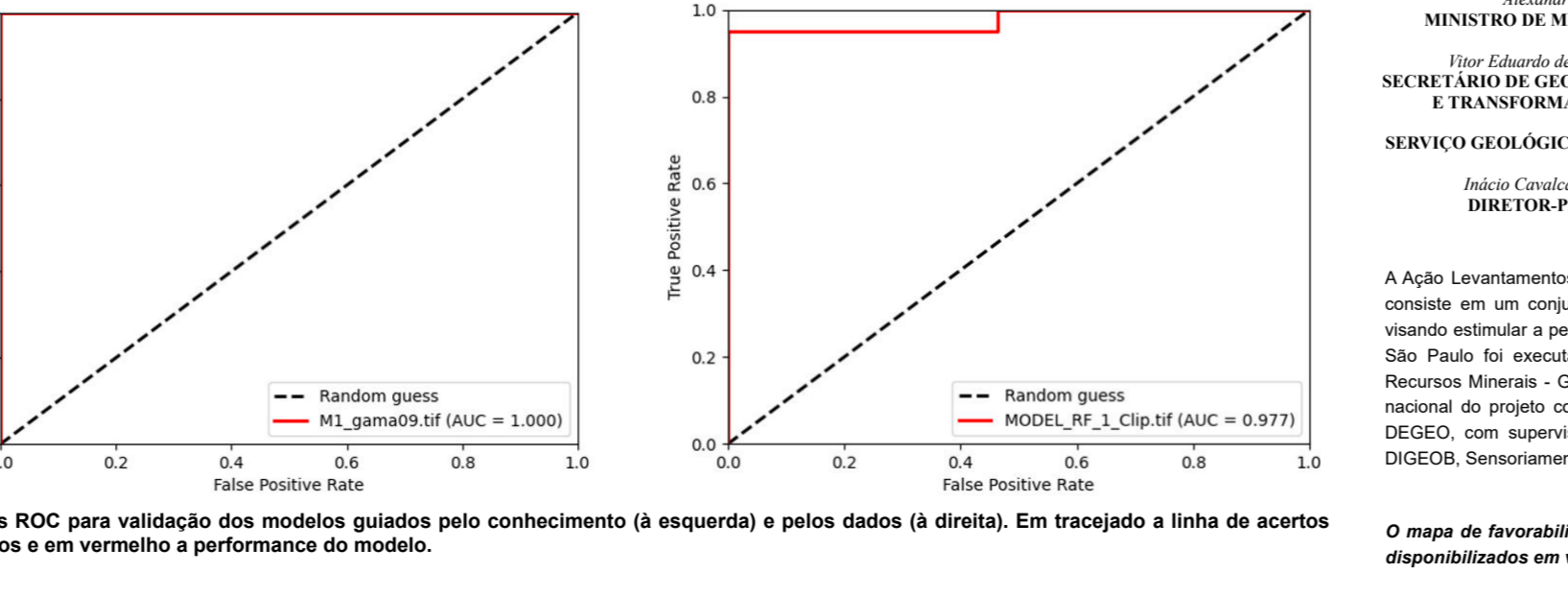
LOCALIZAÇÃO DA ÁREA DE TRABALHO



ARTICULAÇÃO DAS FOLHAS 1:100.000



VALIDAÇÃO DOS MODELOS



BASE CARTOGRÁFICA

Mapa cartográfico digital obtido das cartas impressas publicadas pelo IBGE em 1974, ajustadas às imagens Pleiades...

CREDITOS DE AUTORIA

Autores: Lita Costa Queiroz, Jairo Jamerson Corrêa de Andrade, Luiz Gustavo Rodrigues Pinto, Geoprocessamento: Lita Costa Queiroz, Mauricio Pavan Silva, Vidyá Vieira de Almeida, Gilberto Lima.

MAPA DE FAVORABILIDADE PARA BAUXITA NO NORDESTE DO ESTADO DE SÃO PAULO

