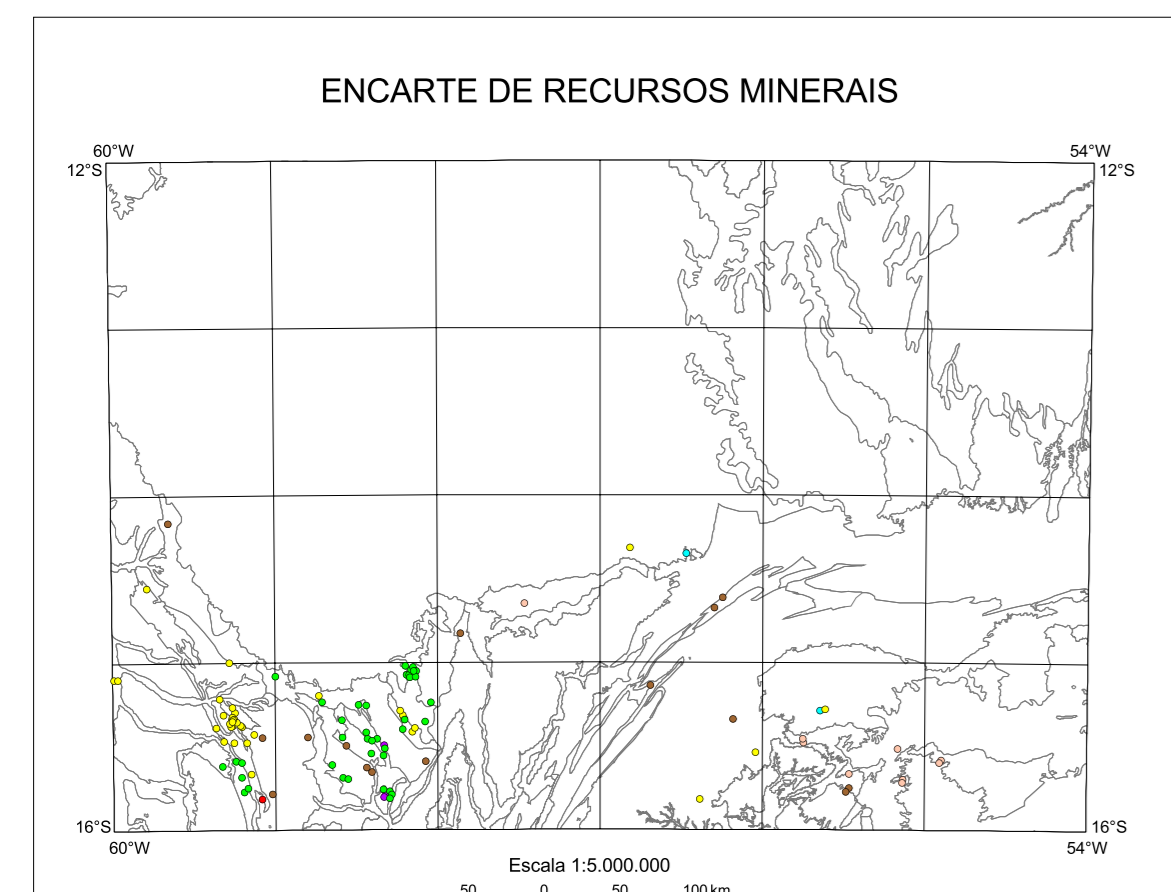
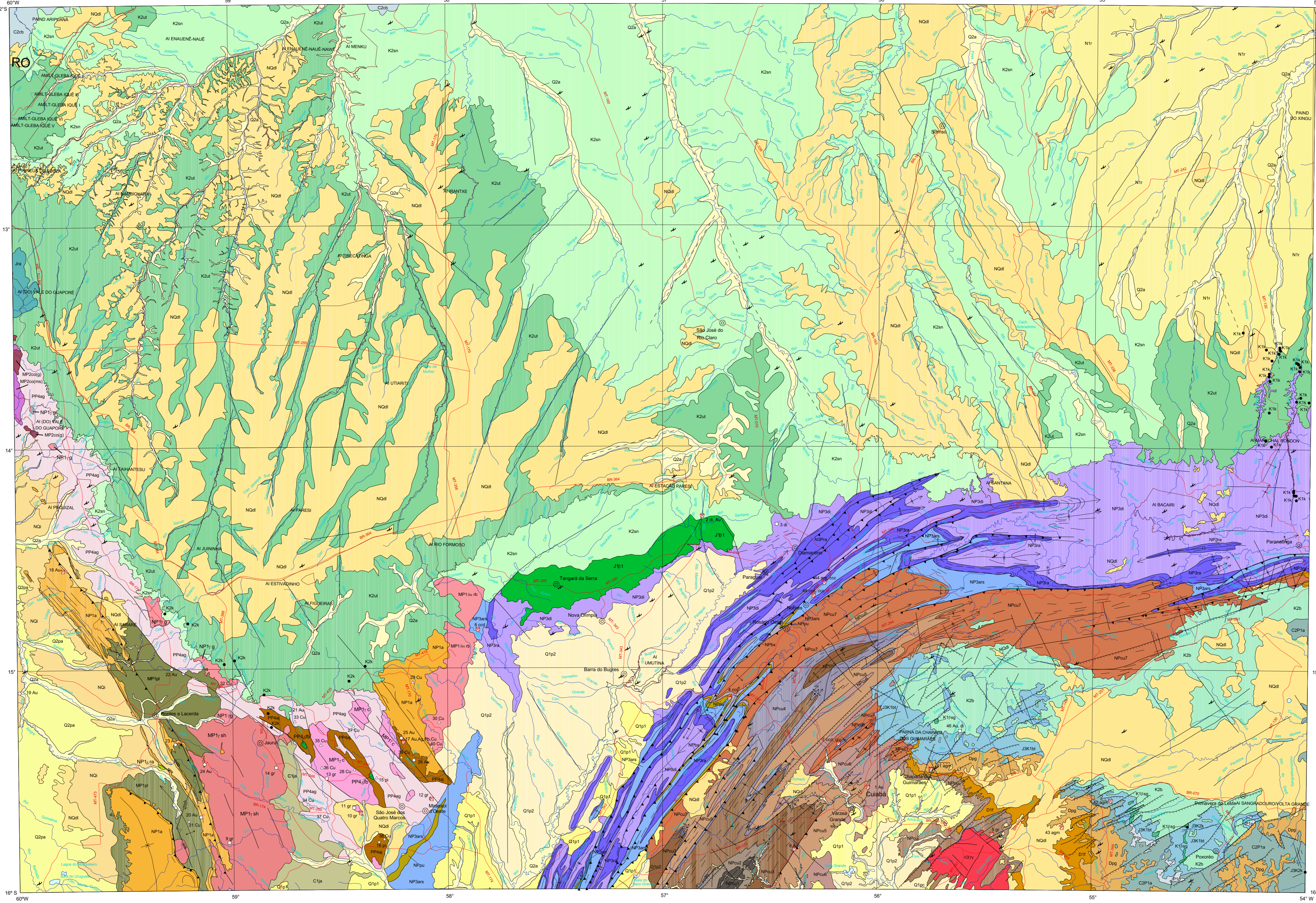


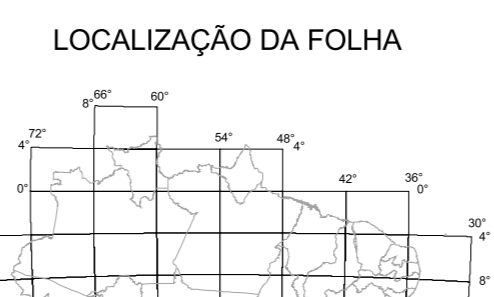
ENTIDADES TECTÔNICAS, DOMÍNIOS TECTÔNICOS ESTRUTURAIS, BACIAS SEDIMENTARES, etc. Legend for geological units and structures.



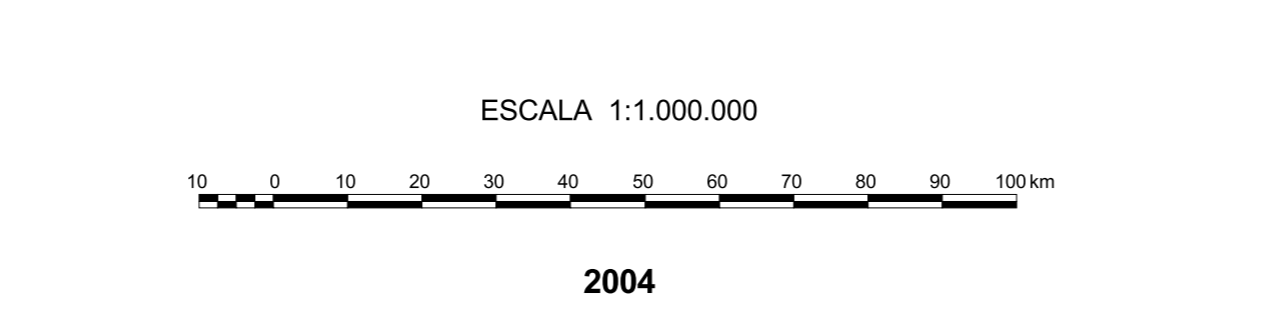
Agendamento dos Recursos Minerais: List of mineral resources and their locations.



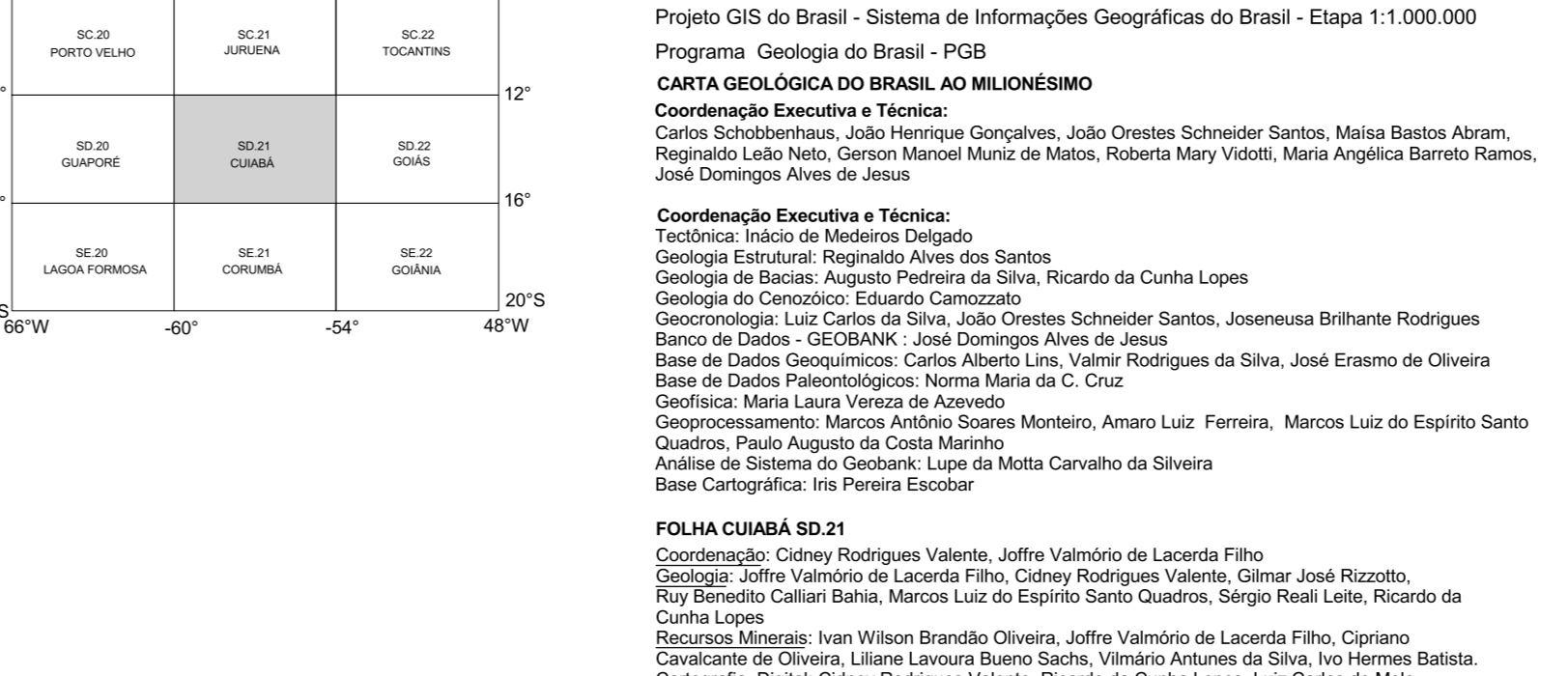
Base cartográfica digital obtida por generalização (convênio IBGE-ANEBEL-CPRM), a partir das folhas da Carta Internacional do Mundo ao Milionésimo...



CARTA GEOLÓGICA DO BRASIL AO MILIONÉSIMO



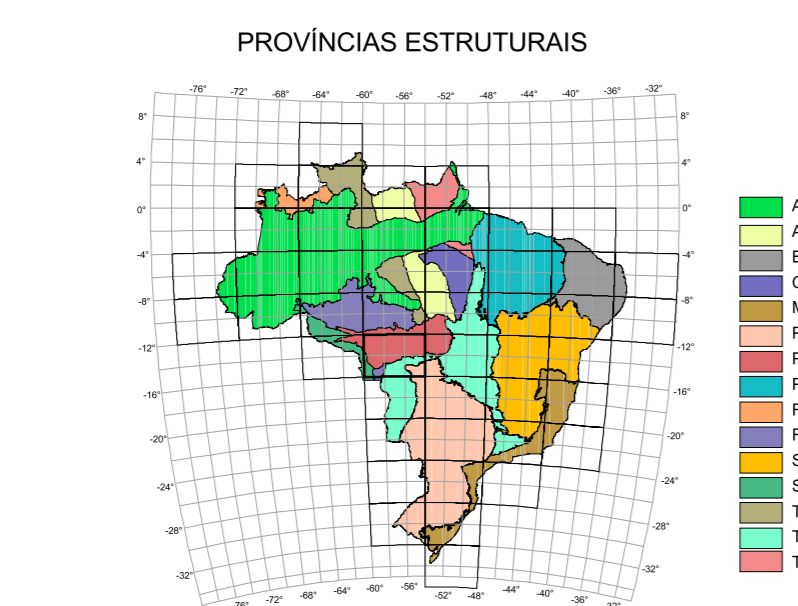
ARTICULAÇÃO DA FOLHA



Divisão de Geologia e Recursos Minerais, Manoel Barreto da Rocha Neto, Departamento de Geologia, Carlos Schobbenhaus, Departamento de Recursos Minerais, Raulo Sérgio Santana Costa de Brito...

RELAÇÃO DE RECURSOS MINERAIS SELECIONADOS E REPRESENTADOS NA FOLHA CUIABÁ SD.21

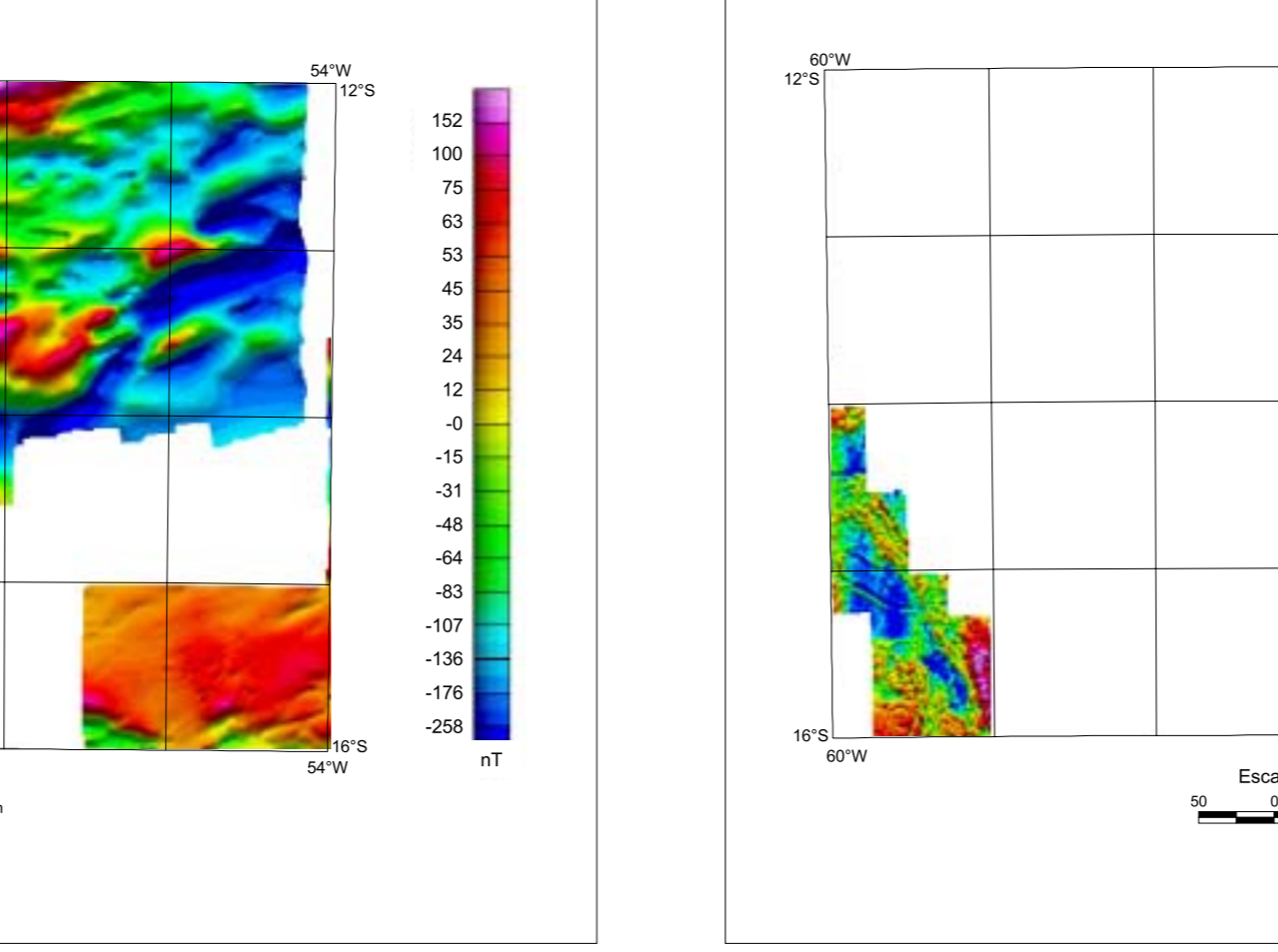
Table listing mineral resources and their locations, including FAZENDA SÃO PAULO, ARRODIADO, FAZENDA GUARANI, etc.



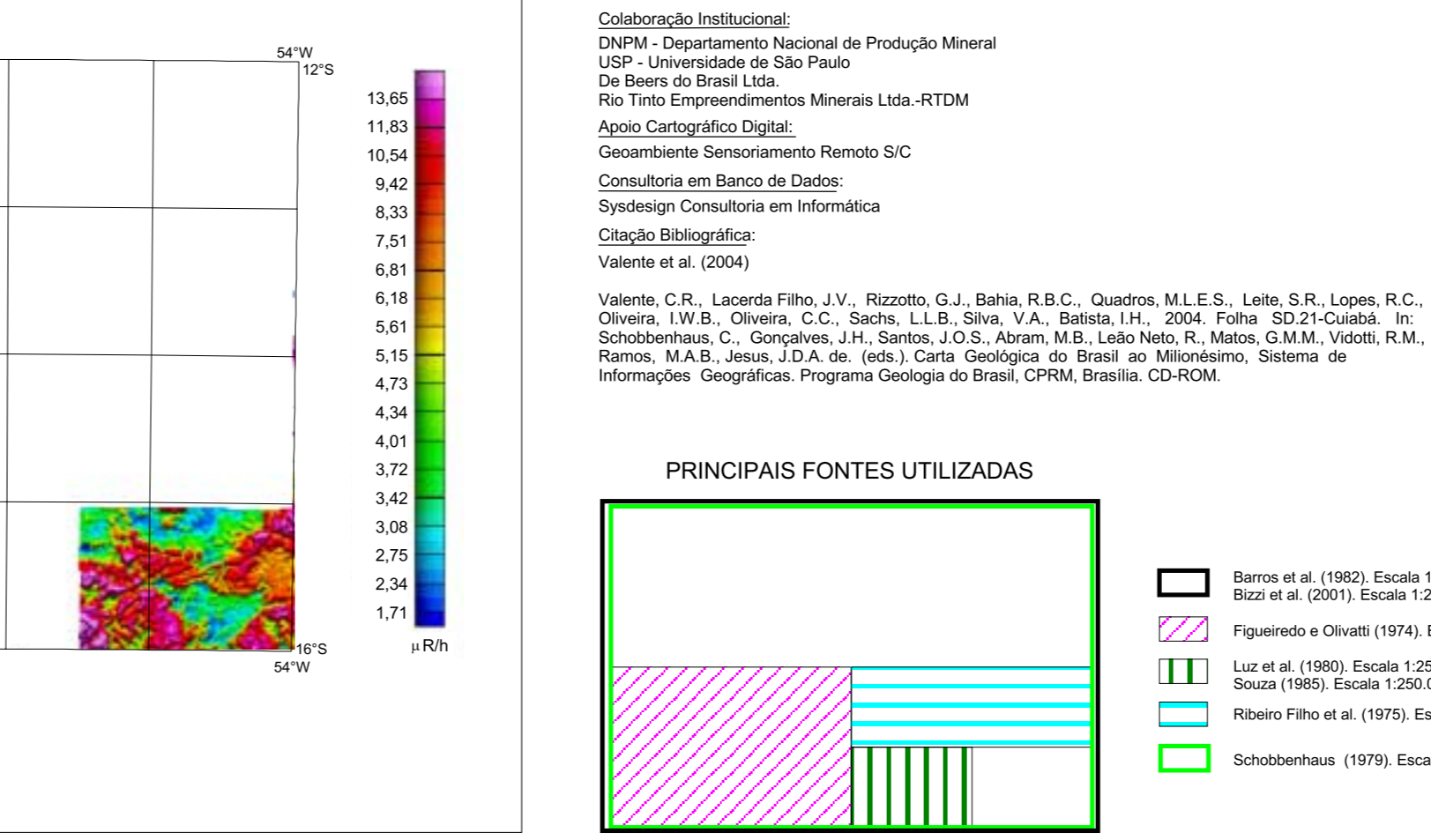
CONVENÇÕES CARTOGRÁFICAS: Legend for cartographic symbols and features.

CONVENÇÕES DOS RECURSOS MINERAIS INDICADOS NA FOLHA: Legend for mineral resource symbols.

AEROMAGNETOMETRIA Campo Total Reduzido do IGRF



AEROGAMAESPETROMETRIA Contagem Total



PRINCIPAIS FONTES UTILIZADAS

List of references and sources used in the map, including Berto et al. (1982), Berto et al. (2001), etc.

Geological column and legend table detailing geological units, their descriptions, and symbols. Includes sections for FANEROZOICO, MESOPROTEROZOICO, and PROTEROZOICO.

CONVENÇÕES GEOLÓGICAS: Legend for geological symbols and features.

RELAÇÃO DE MACROFÓSSEIS: Table listing macrofossils and their locations.