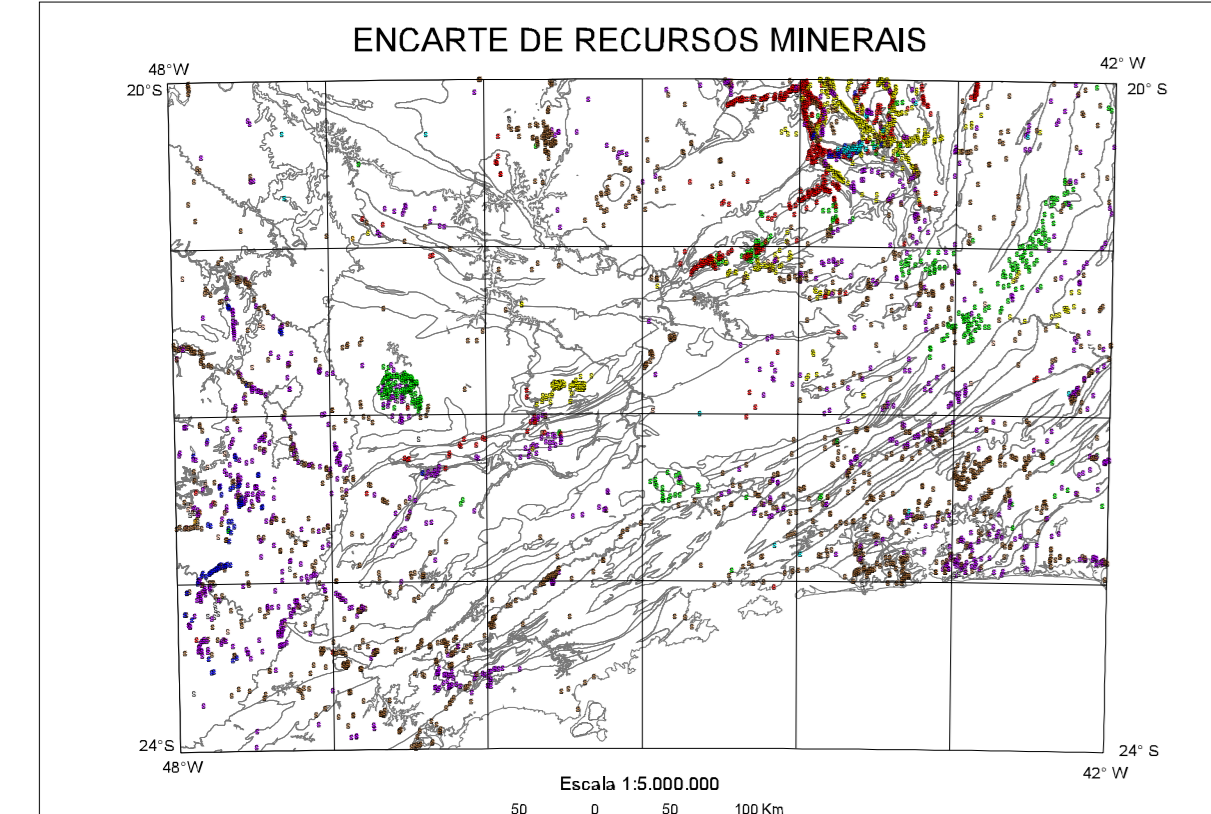


ENTIDADES TÉCNICAS: Table listing technical entities, geological units, and their descriptions.



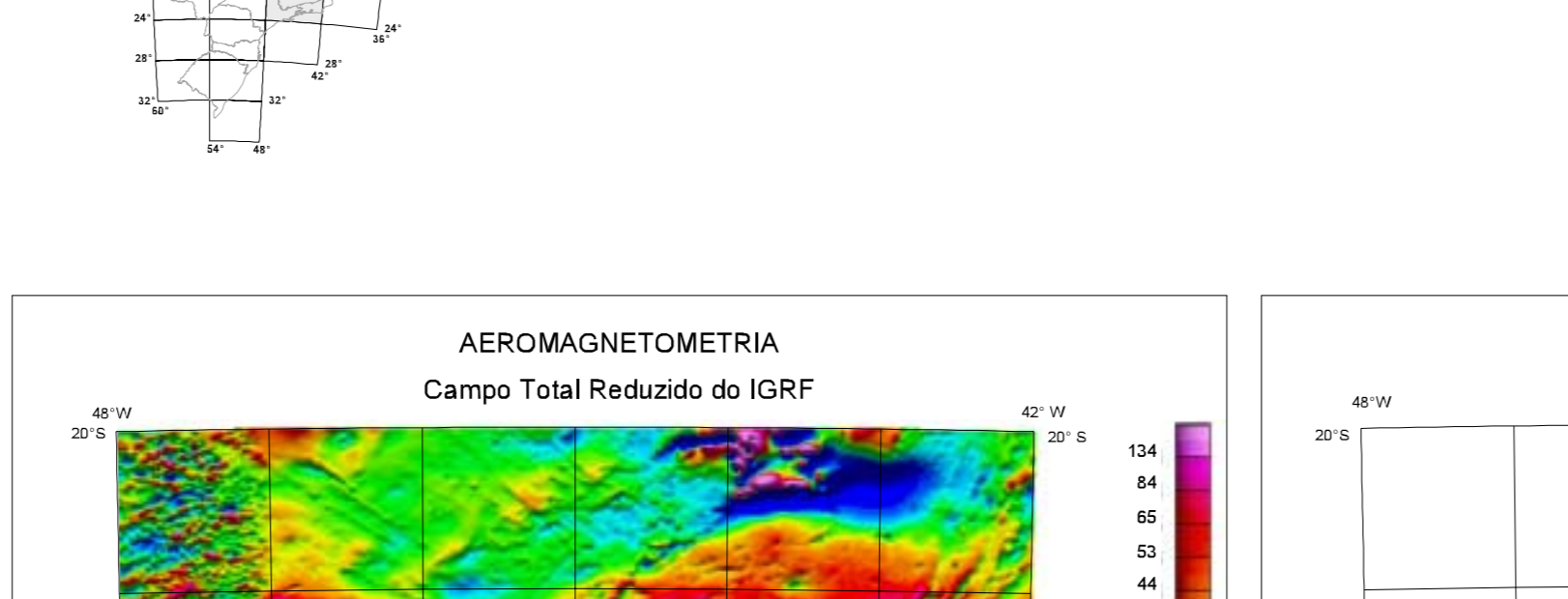
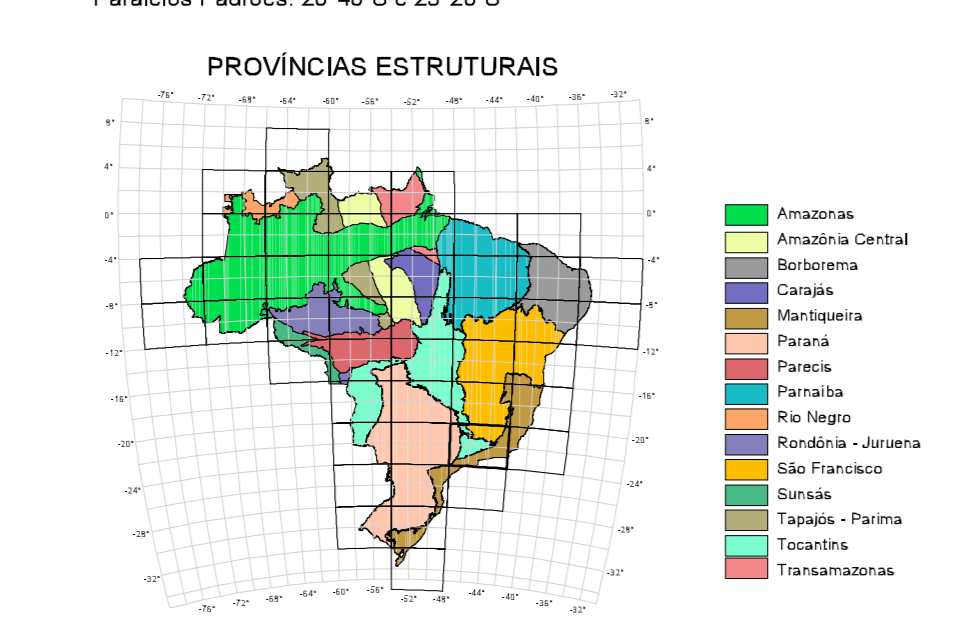
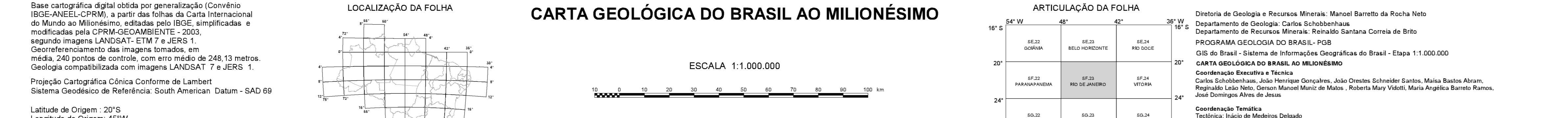
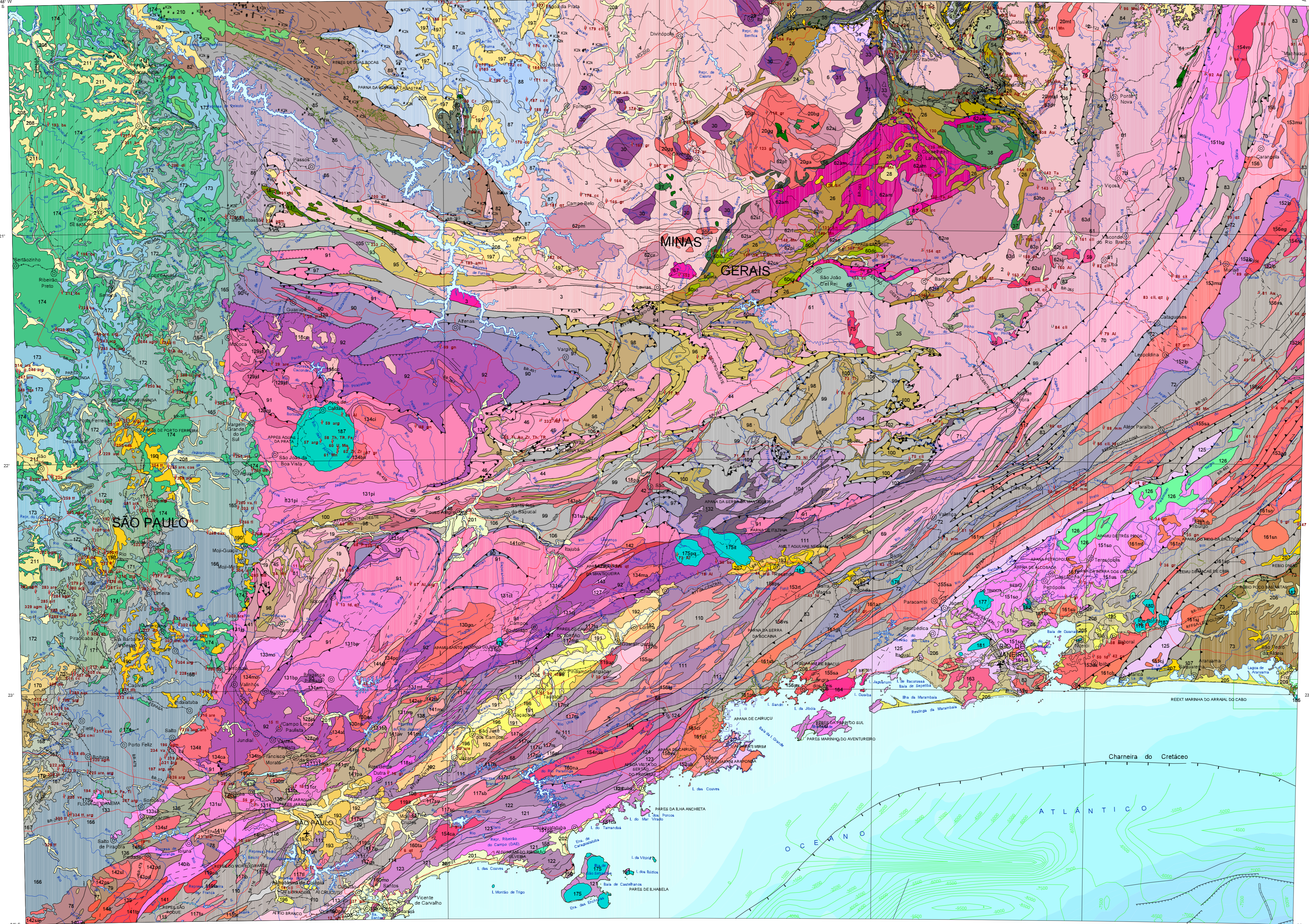
Agregados das Substâncias Minerais: Table listing mineral aggregates and their characteristics.

RELAÇÃO DE RECURSOS MINERAIS SELECIONADOS E REPRESENTADOS NA FOLHA RIO DE JANEIRO-SF-23: Table listing selected mineral resources and their locations.

PROVÍNCIAS ESTRUTURAIS: Table listing structural provinces and their characteristics.

CONVENÇÕES DOS RECURSOS MINERAIS INDICADOS NA FOLHA: Table listing mineral resource conventions and their symbols.

CONVENÇÕES GEOLÓGICAS DA MARGEM CONTINENTAL: Table listing geological conventions for the continental margin.



PRINCIPAIS FONTES UTILIZADAS: Table listing the main sources used in the map's compilation.

PRINCIPAIS FONTES UTILIZADAS: Table listing the main sources used in the map's compilation.

CONVENÇÕES GEOLÓGICAS: Table listing geological conventions and their symbols.

CONVENÇÕES GEOLÓGICAS: Table listing geological conventions and their symbols.

Geological legend table with columns for provinces (TOCANTINS/PARANÁ, SÃO FRANCISCO, MANTIQUEIRA), geological units, and descriptions.

NOTAS sobre as Unidades de Mapa: Additional notes regarding the map units and their classification.