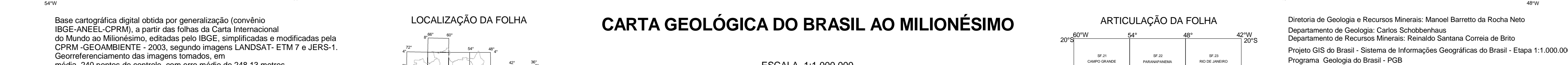
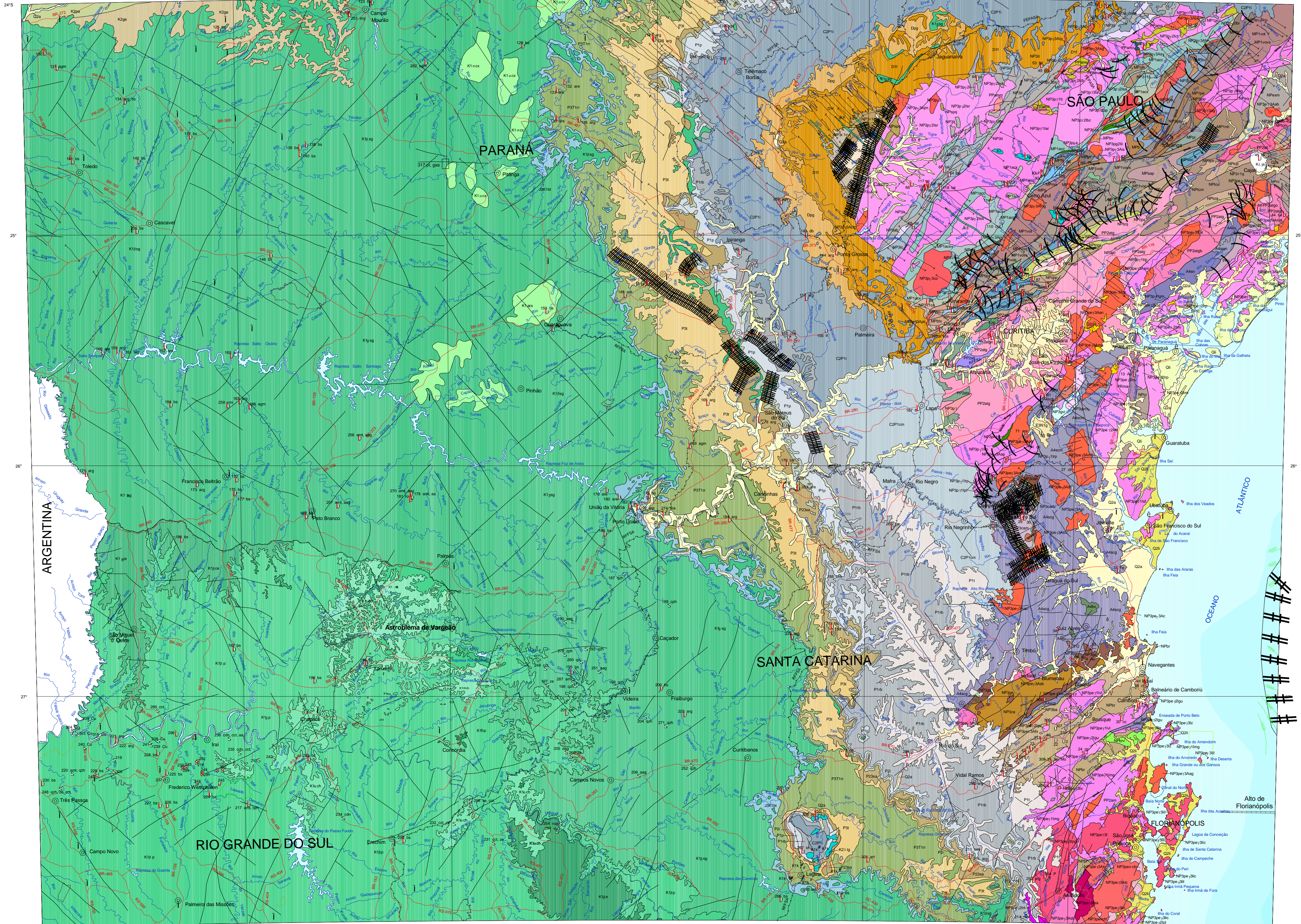
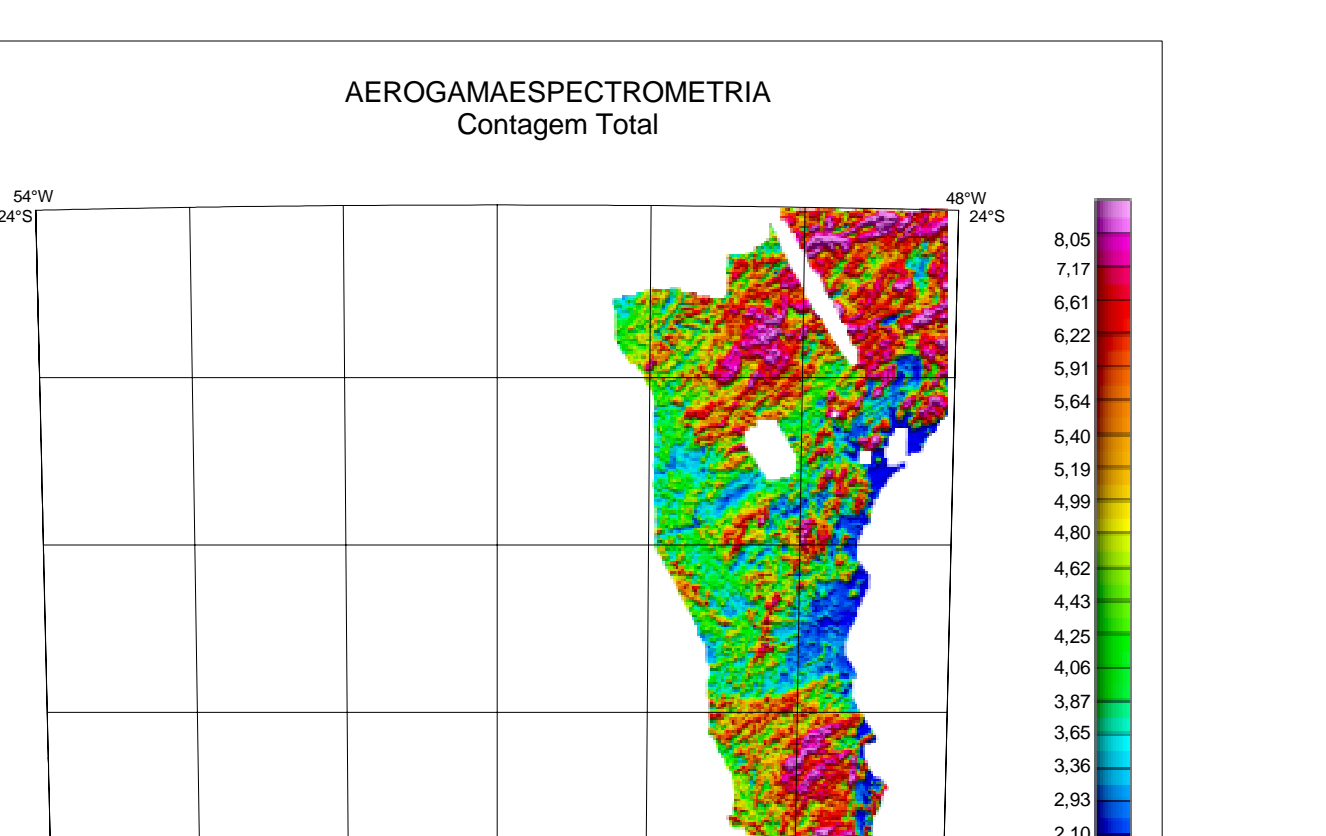
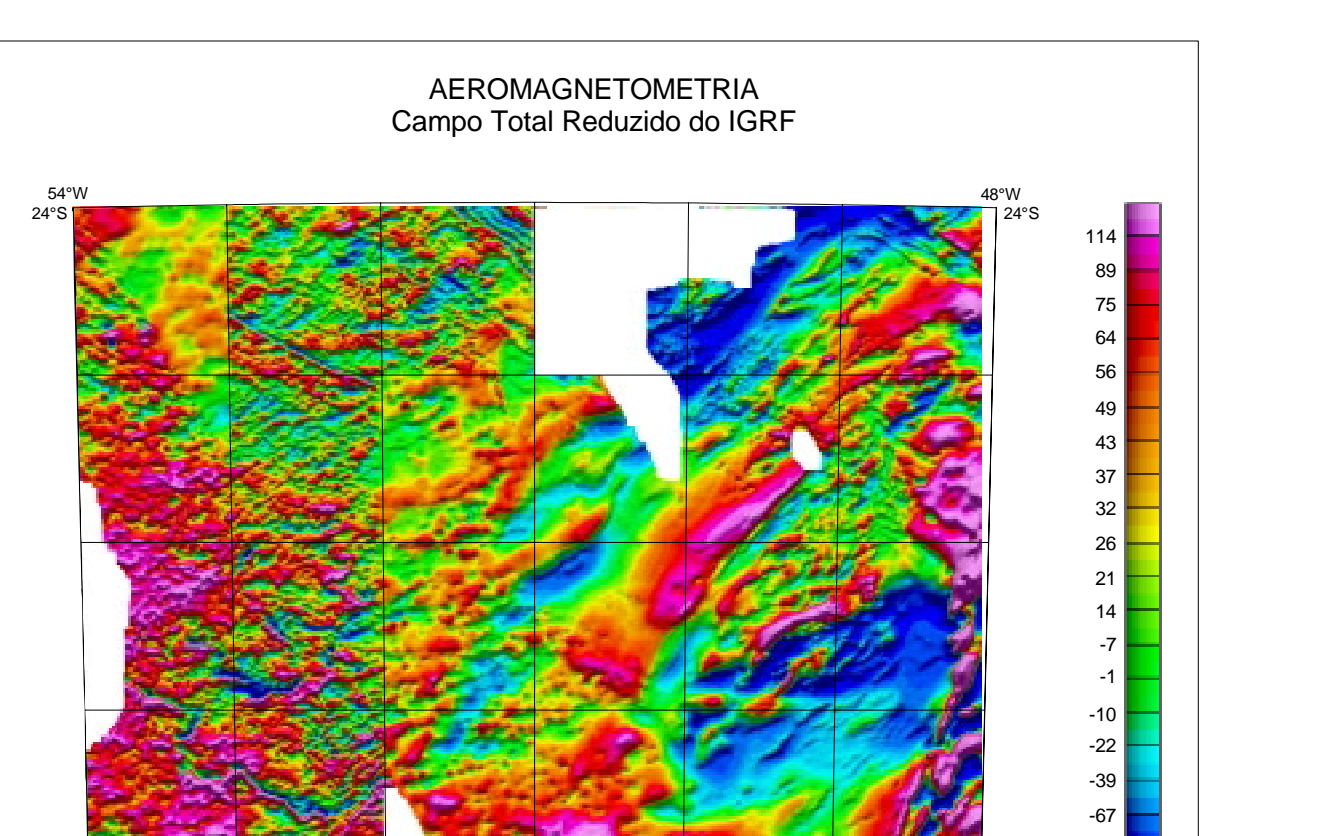
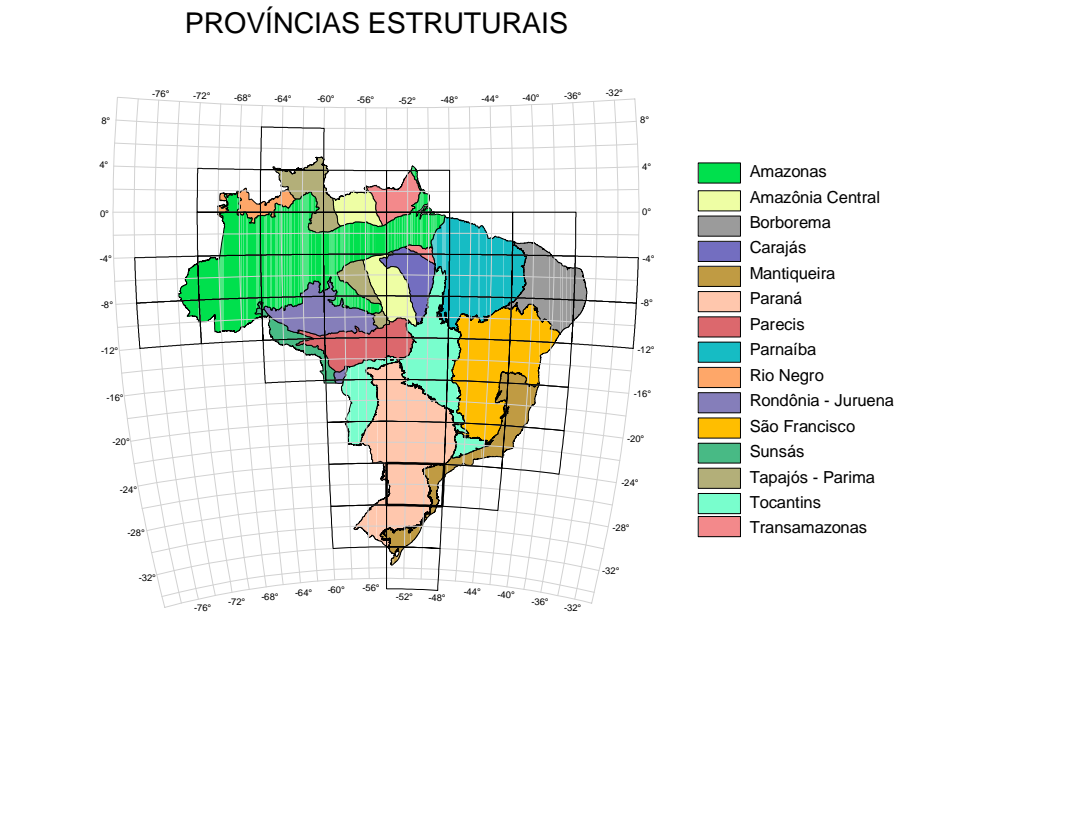


RELAÇÃO DE RECURSOS MINERAIS SELECIONADOS E REPRESENTADOS NA FOLHA CURITIBA SG.22



CONVENÇÕES CARTOGRAFICAS: Cartographic symbols and abbreviations used on the map.



CONVENÇÕES DOS RECURSOS MINERAIS: Symbols for mineral resources and their economic status.

CONVENÇÕES GEOLÓGICAS DA MARGEM CONTINENTAL: Symbols for continental margin geological features.

PRINCIPAIS FONTES UTILIZADAS: List of primary data sources and references used in the map.

CONVENÇÕES GEOLÓGICAS: Geological symbols and abbreviations for rock units and features.

PROVINCIAS PARANÁ E MANTIQUEIRA: Geological units and descriptions for the Paraná and Mantiqueira provinces.

PROTEROZOICO: Geological units and descriptions for the Proterozoic period.

ARQUEANO: Geological units and descriptions for the Archean period.

RELAÇÃO DE MACROFÓSSEIS: Relation of macrofossils between the Paraná and Permian-Cambrian periods.

CONVENÇÕES GEOLÓGICAS: Additional geological symbols and abbreviations.