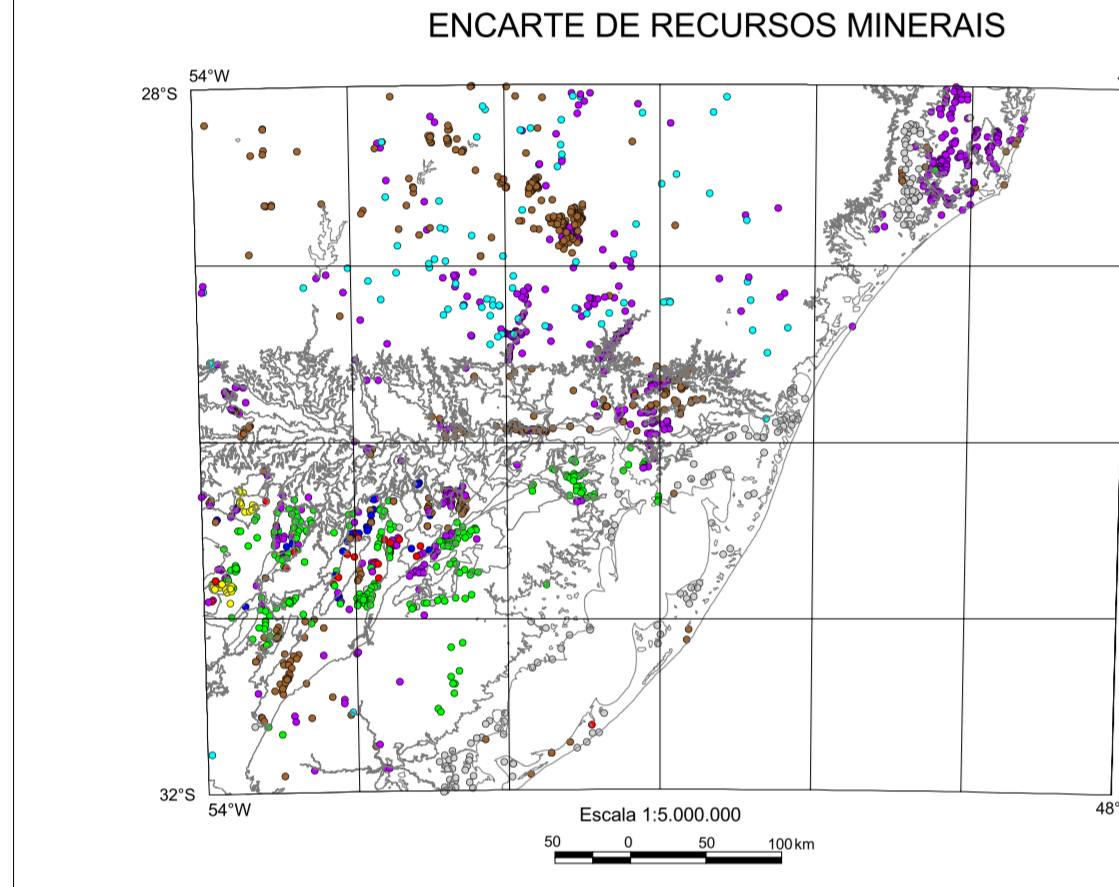
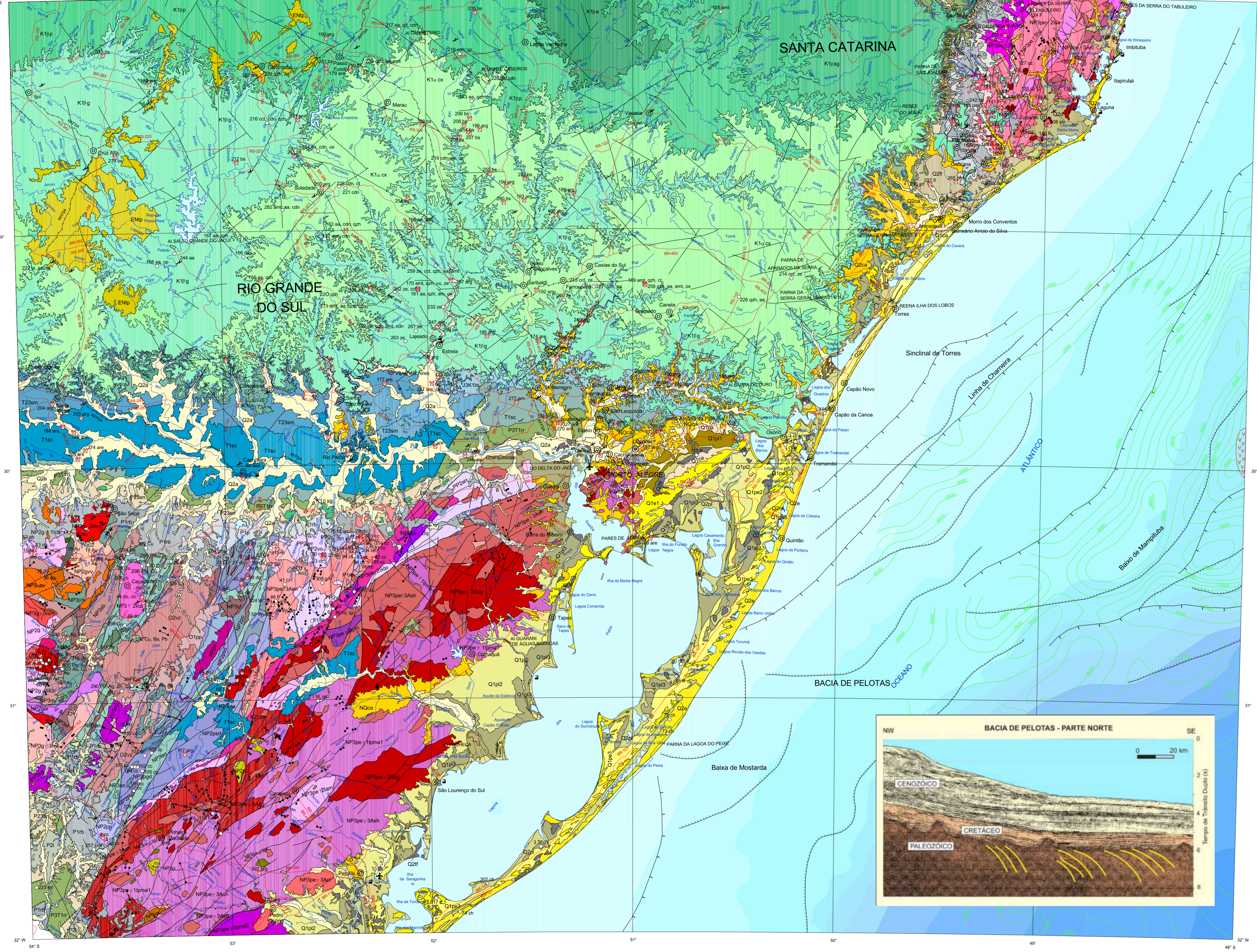


ENTIDADES TECTÔNICAS, COBERTURAS CENÓZOICAS, DOMÍNIOS TECTONICO-ESTRUTURAIS. Includes legends for tectonic units and coverages.



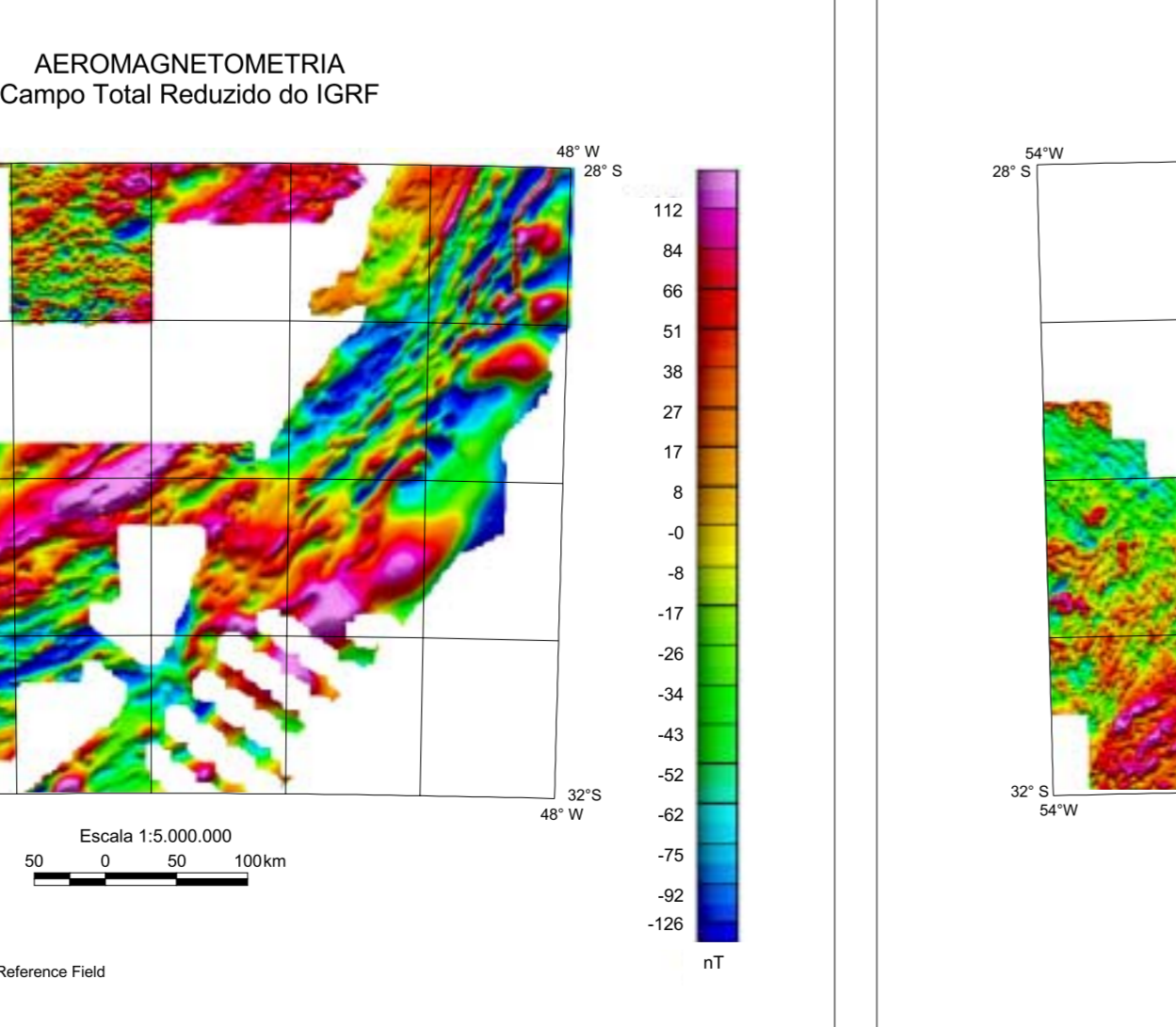
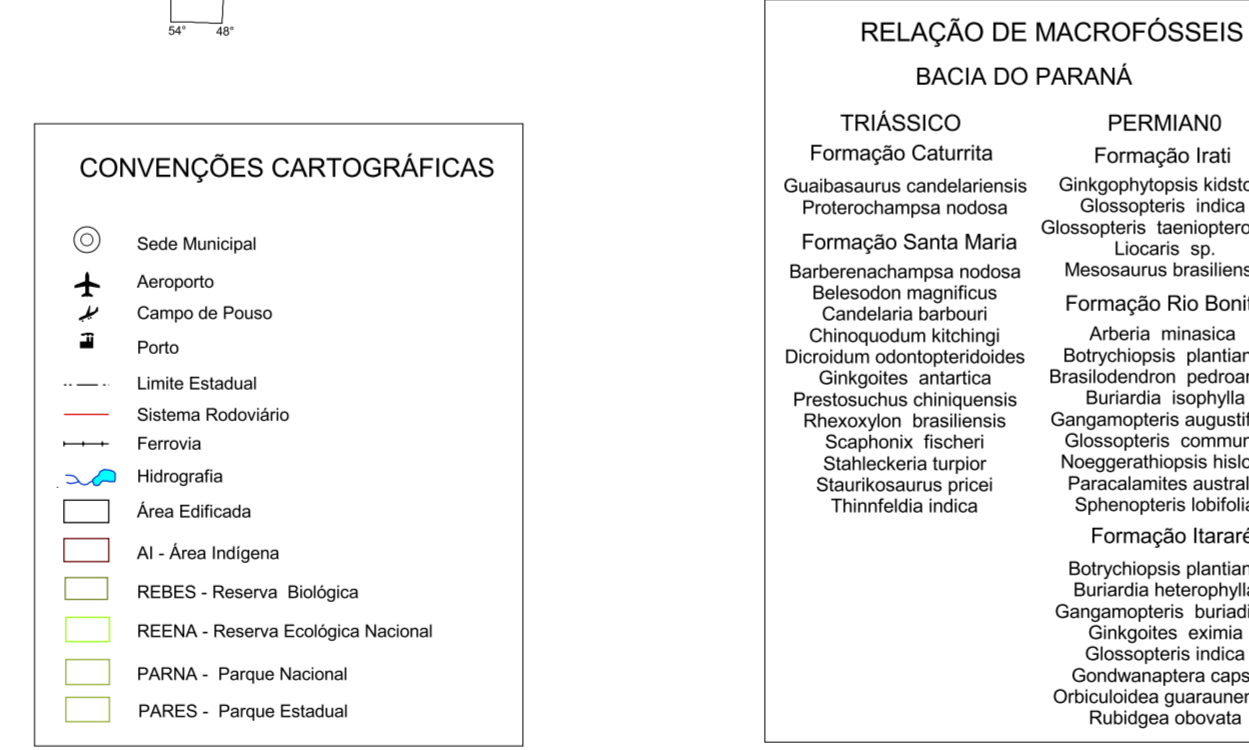
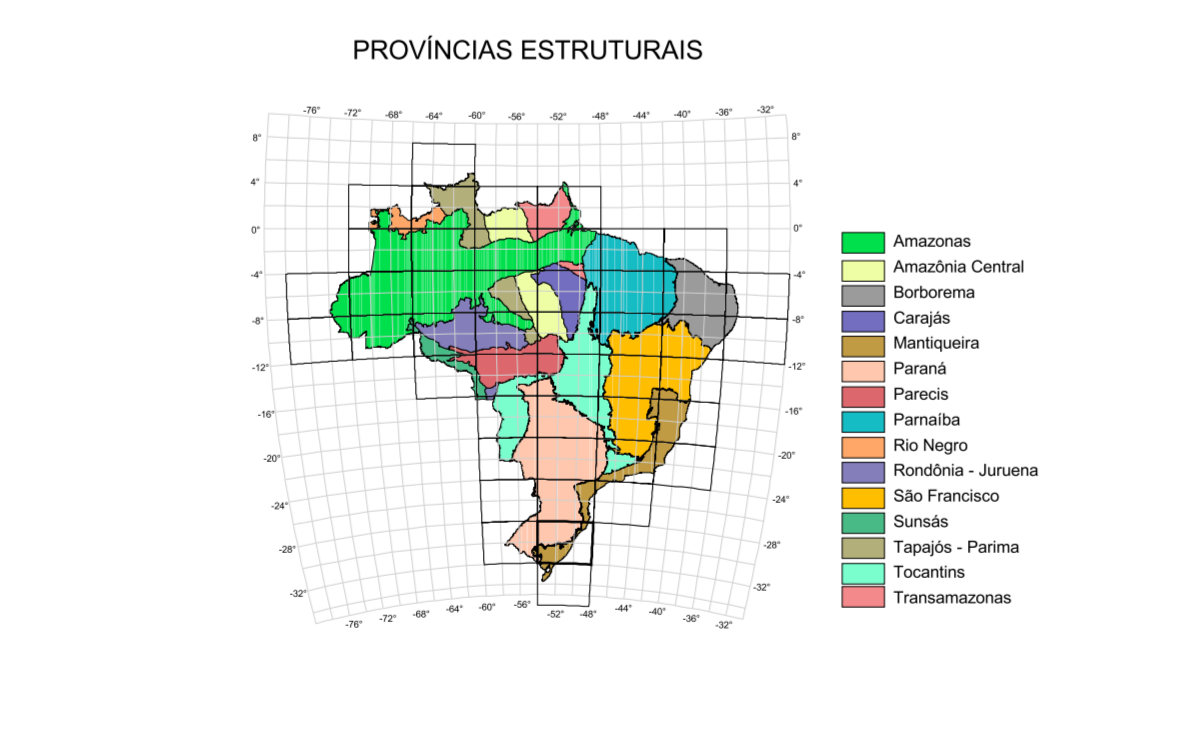
Agrupamento dos Recursos Minerais. Table showing mineral resource groupings and their characteristics.

RELAÇÃO DE RECURSOS MINERAIS SELECIONADOS E REPRESENTADOS NA FOLHA PORTO ALEGRE-SH. 22. List of selected mineral resources and their representation on the map.

Base cartográfica digital obtida por generalização (Convênio IBGE-ANIEL-CPRM). Table providing details on the cartographic base used.

PROVÍNCIAS ESTRUTURAIS. Table listing structural provinces and their geographical coordinates.

CONVENÇÕES DOS RECURSOS MINERAIS INDICADOS NA FOLHA. Table defining symbols and colors for mineral resources on the map.



CONVENÇÕES CARTOGRAFICAS. Table defining cartographic symbols and line types.

CONVENÇÕES GEOLÓGICAS. Table defining geological symbols and line types for various rock types and structures.

CONVENÇÕES GEOLÓGICAS DA ESCALA CONTINENTAL. Table defining geological symbols for continental-scale mapping.

PRINCIPAIS FONTES UTILIZADAS. Table listing the main sources used for geological data.

Geological column table for PARANÁ E MANTIQUEIRA, listing geological units from the Cenozoic to the Paleozoic and their descriptions. Includes units like Depósitos da Barreira Holocênica, Depósitos da Barreira Pleistocênica 3, etc.

NOTAS: Tabela em Ma. (BIBH em anos). Legend for geological units and symbols.