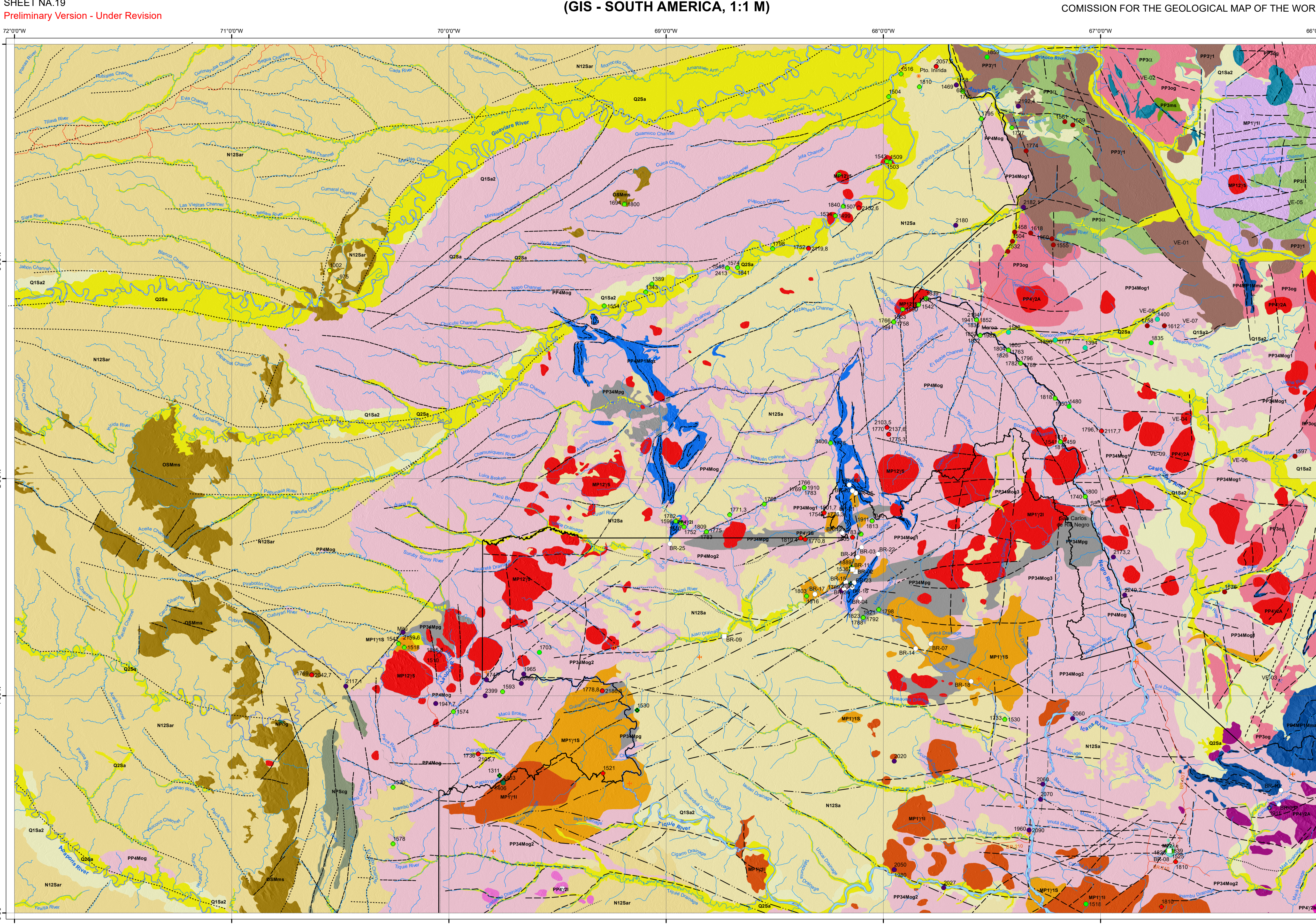
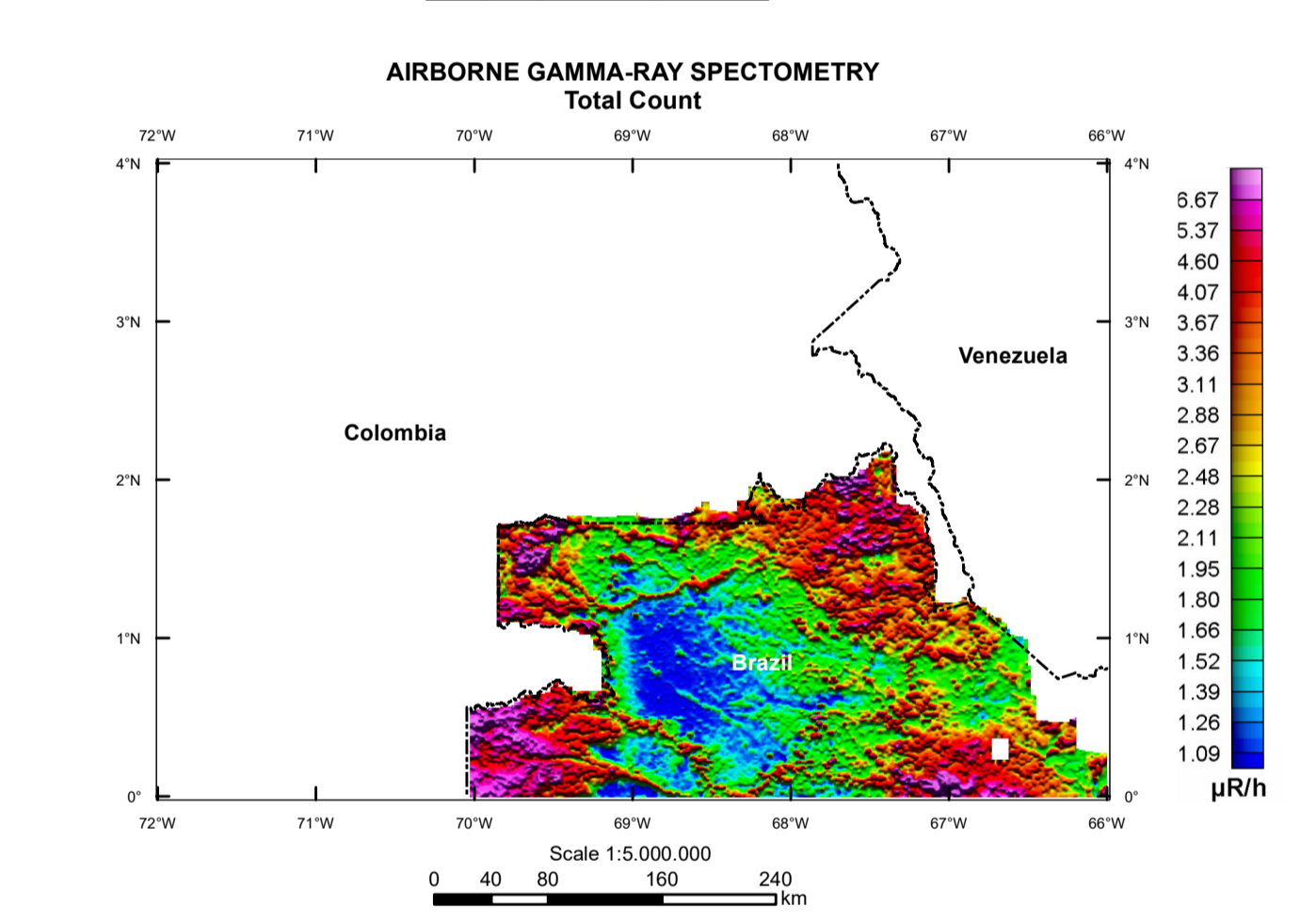
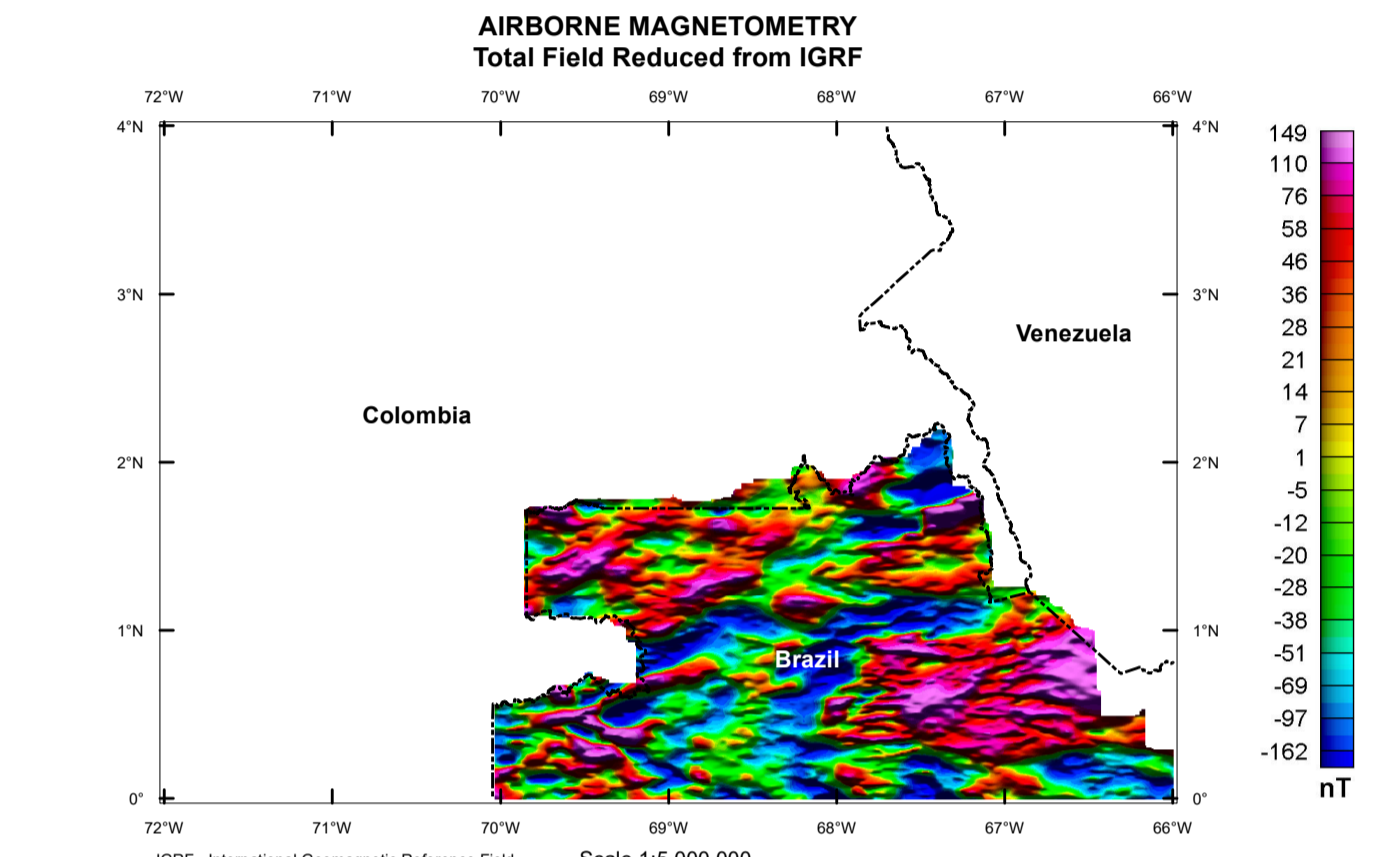
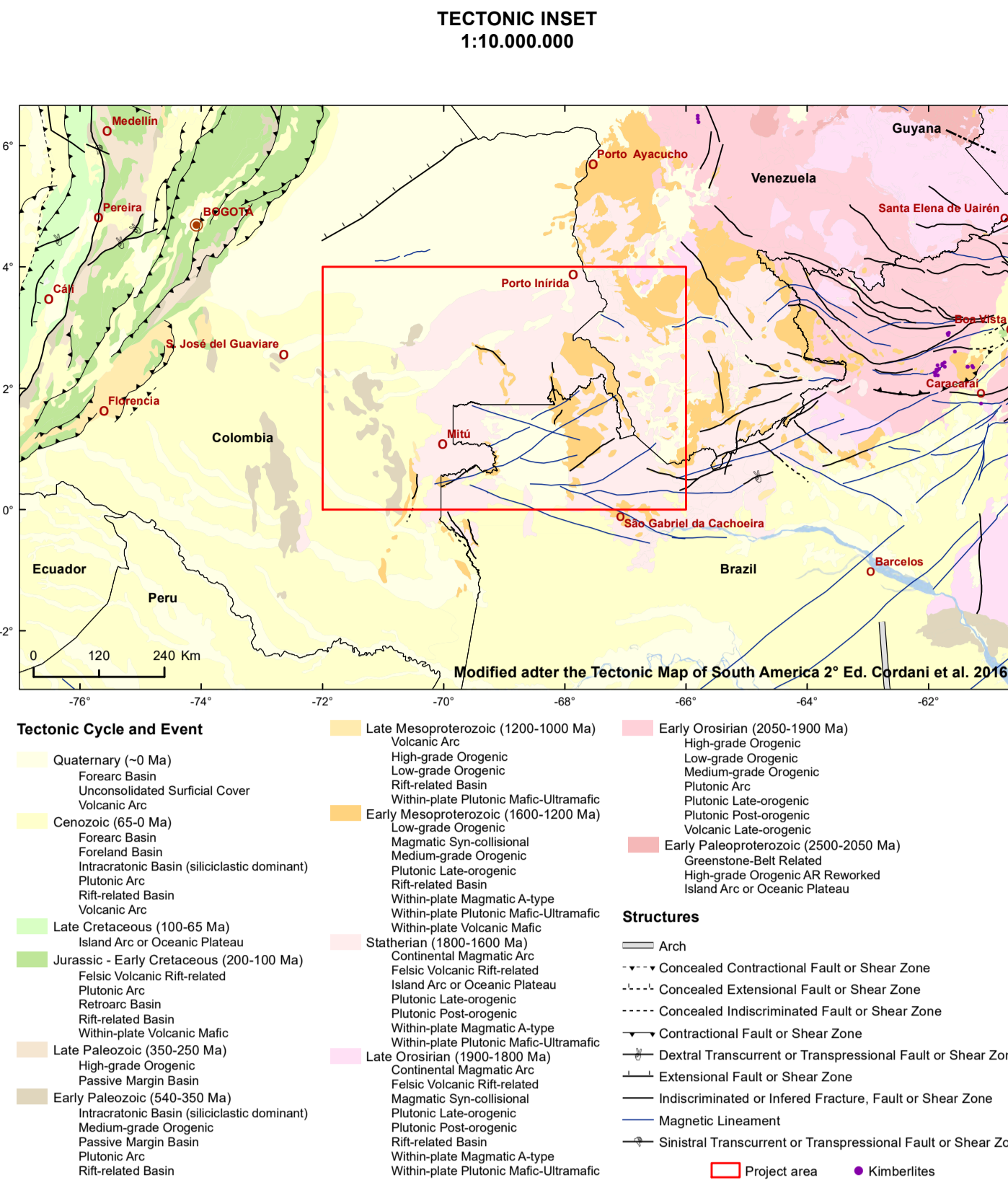


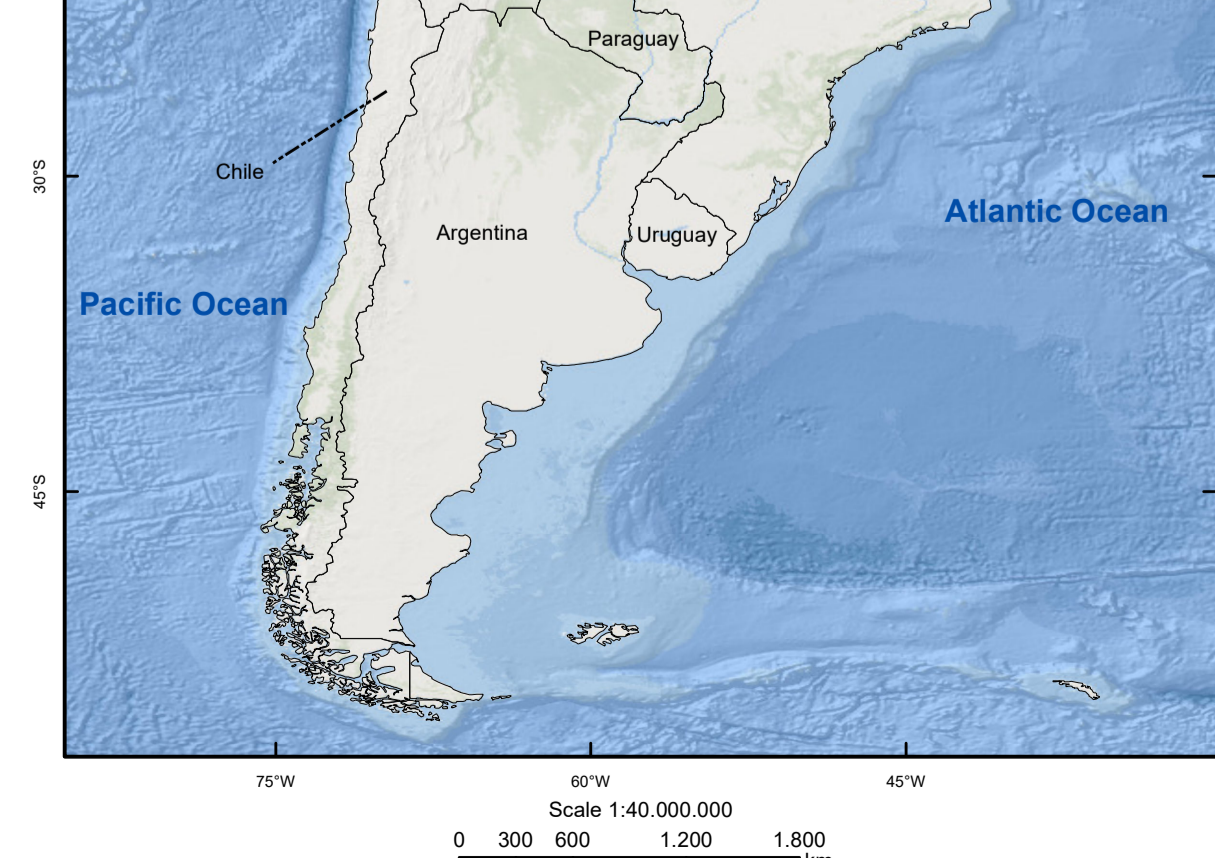
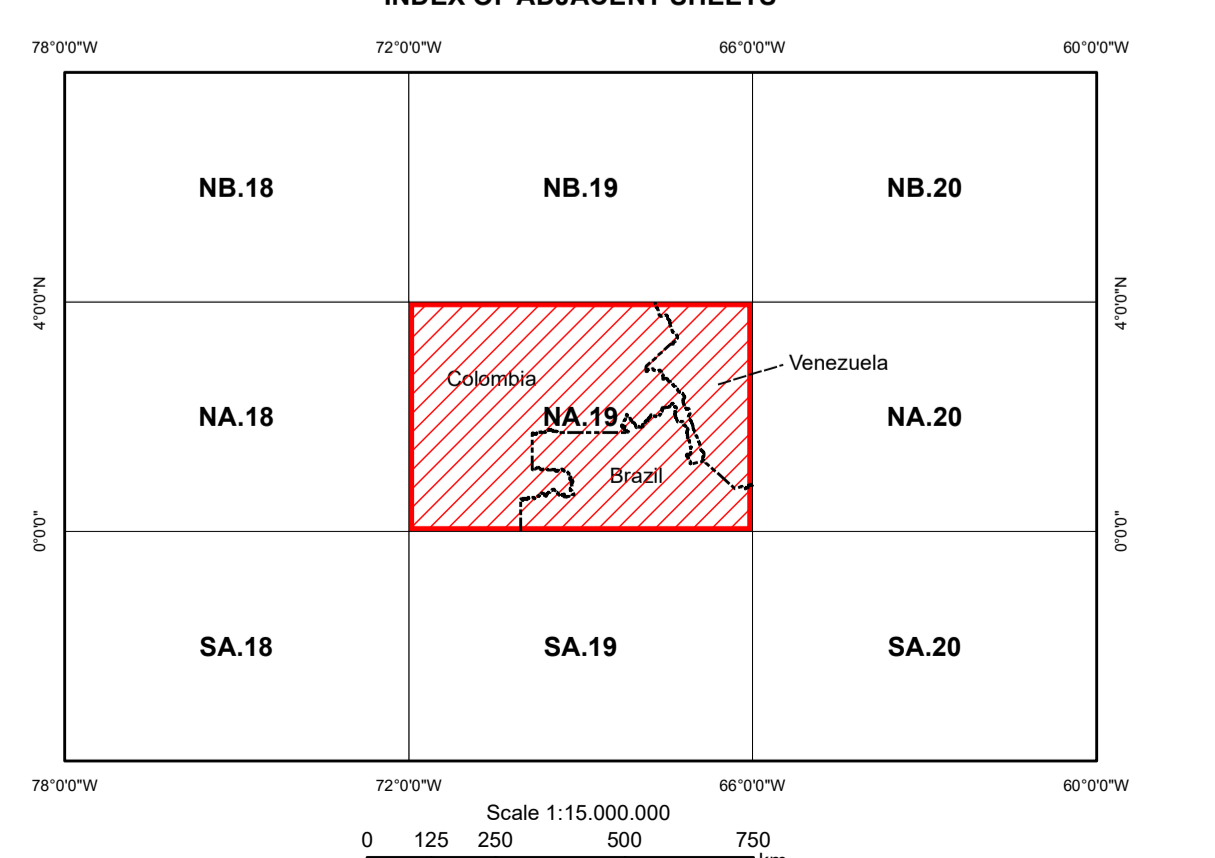
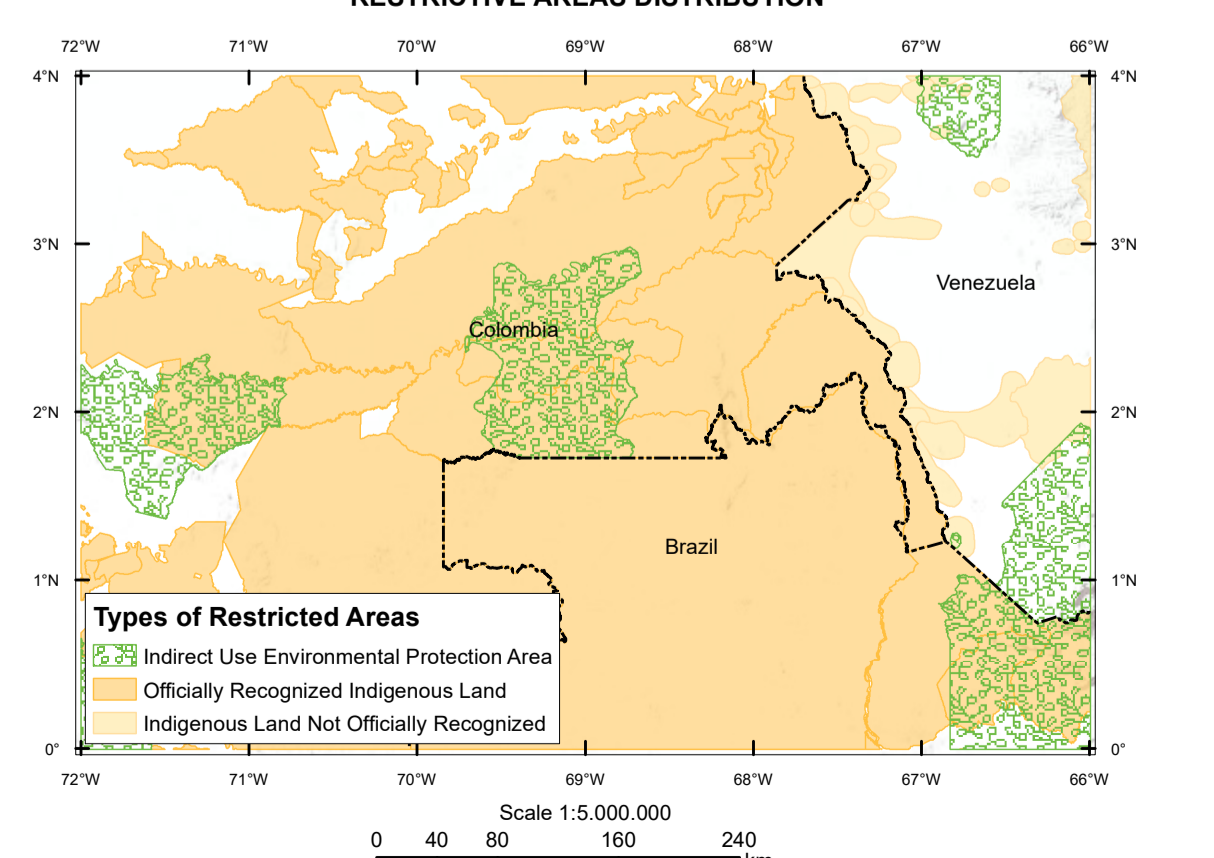
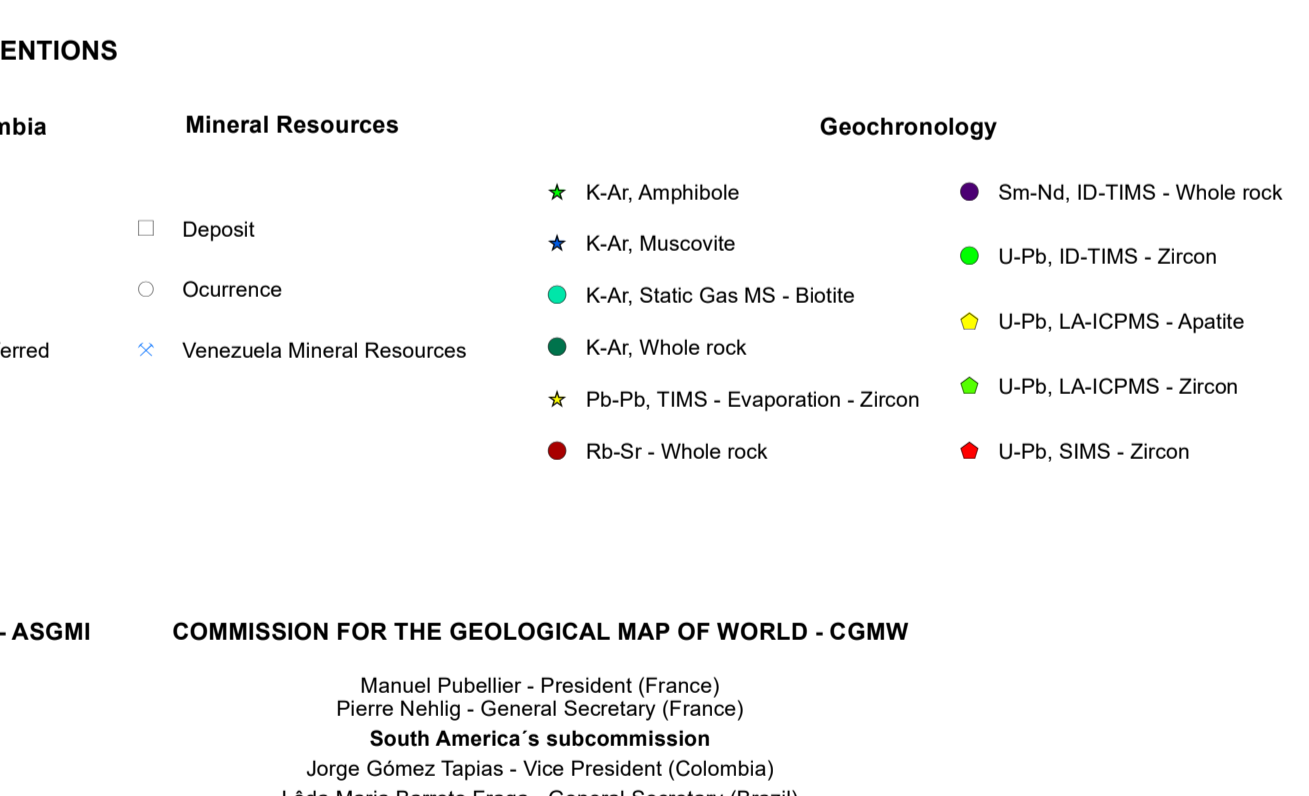
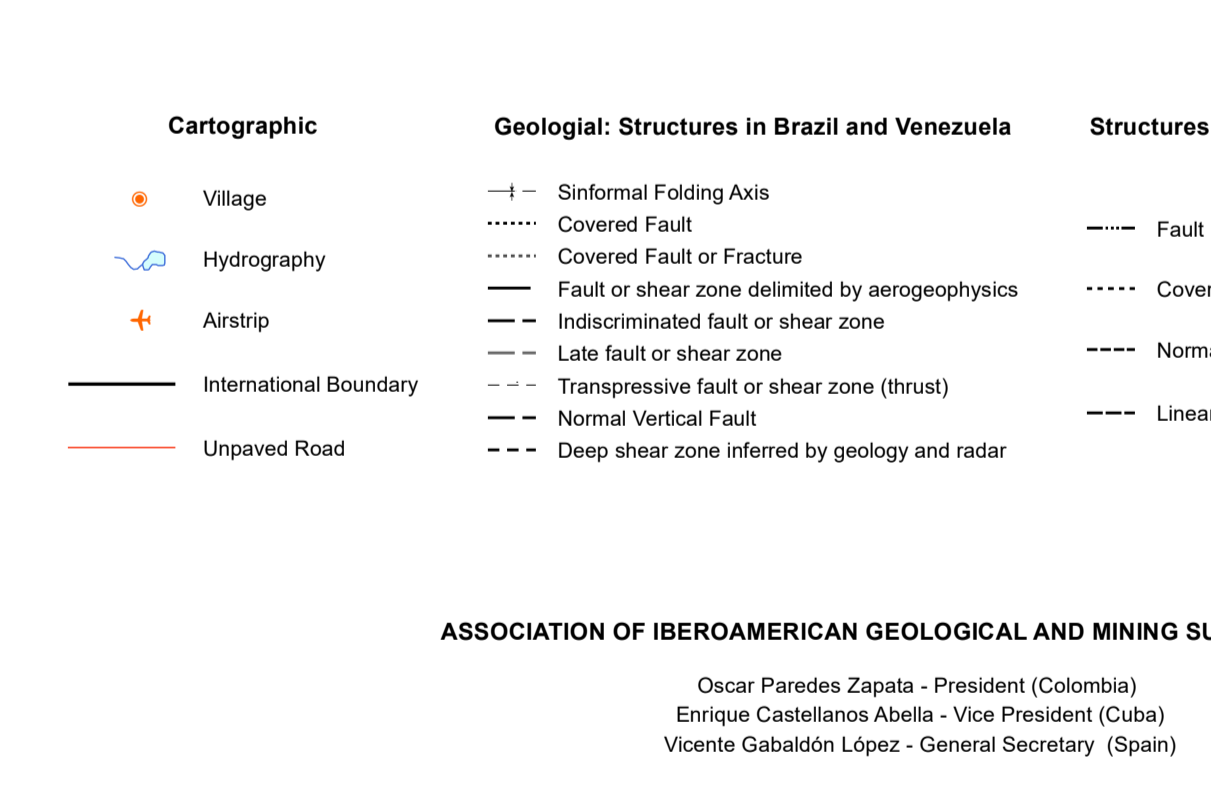
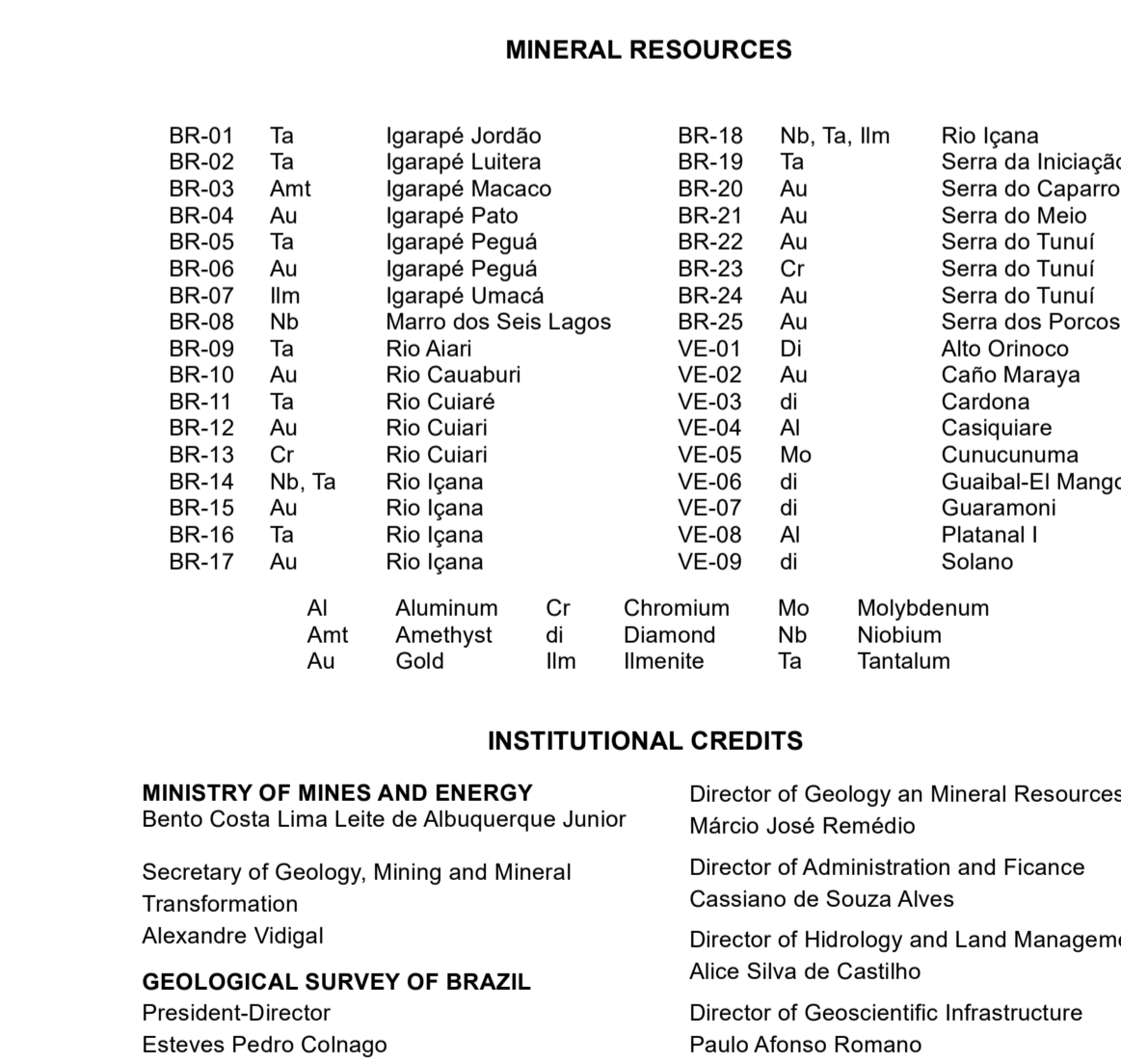
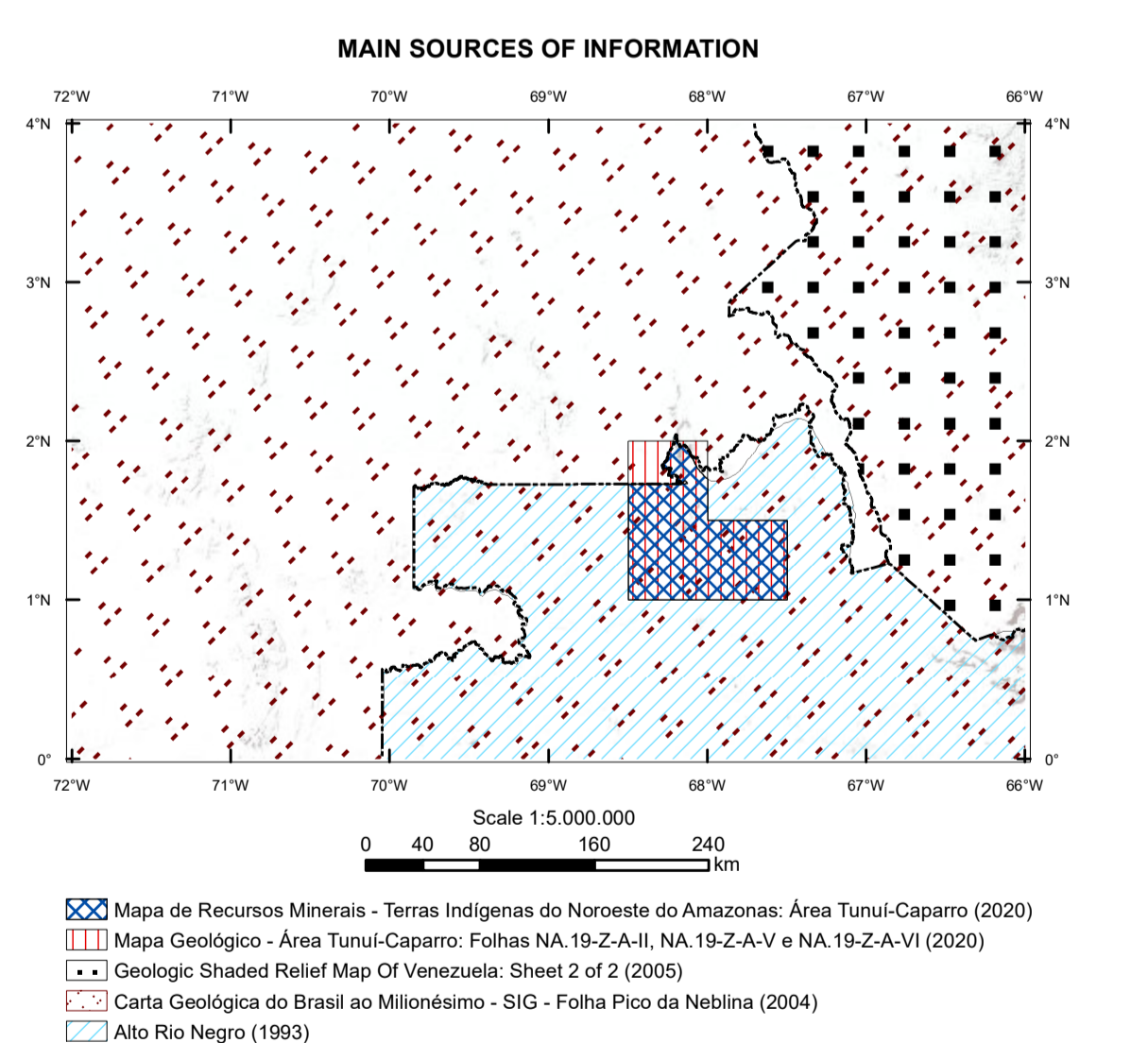
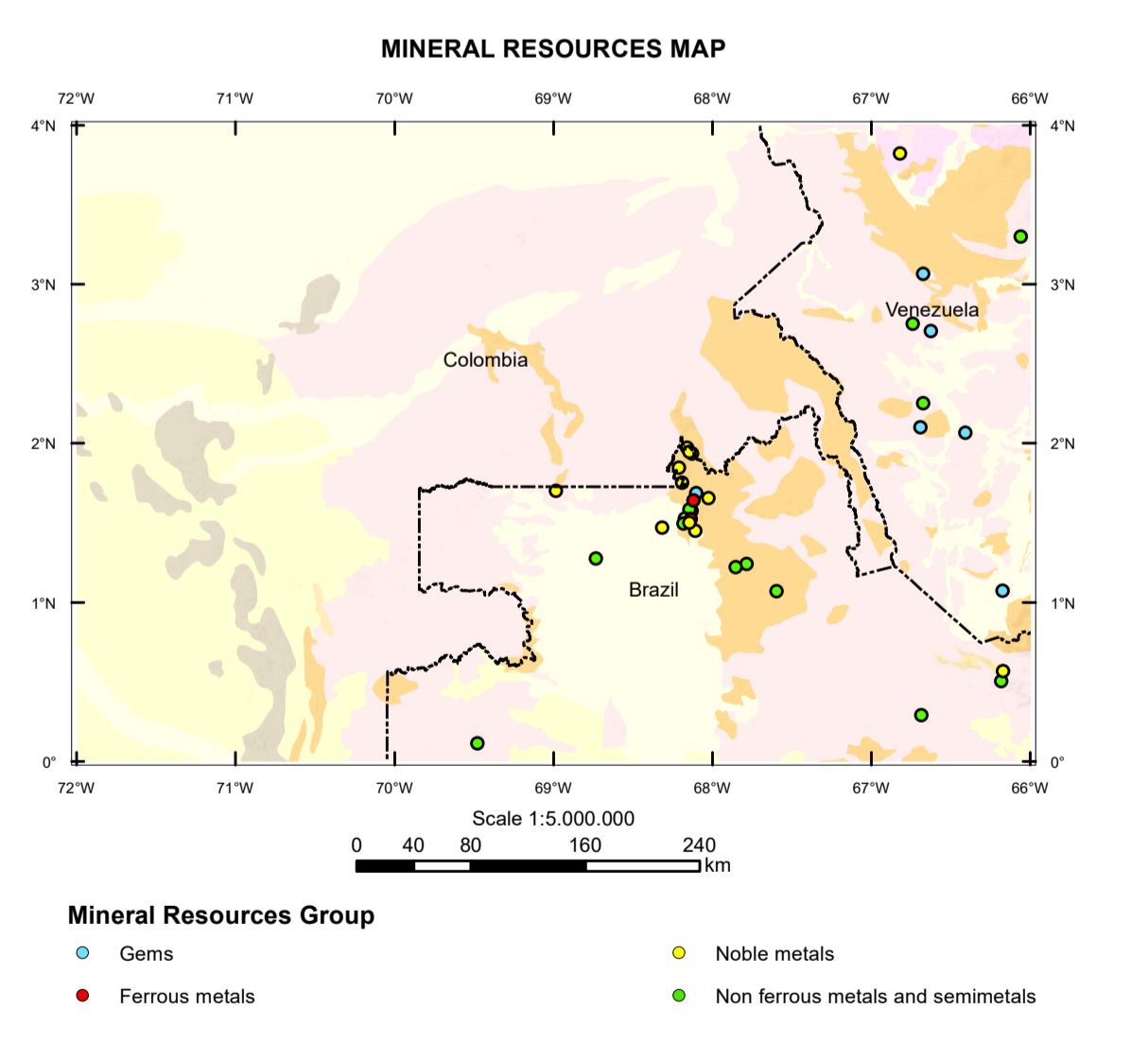
GEOLOGICAL AND MINERAL RESOURCES MAP OF SOUTH AMERICA
(GIS - SOUTH AMERICA, 1:1 M)

COMMISSION FOR THE GEOLOGICAL MAP OF THE WORLD

STRATIGRAPHIC COLUMN



DESCRIPTION OF THE LITHOLOGIC AND LITHOSTRATIGRAPHIC UNITS	BRAZIL	COLOMBIA	VENEZUELA	STRATIGRAPHIC COLUMN					
				QUATERNARY	CENOZOIC	CRETACEOUS	TRIASSIC	PALAEOZOIC	
Unconformable deposits of sand, silt, clay and gravel, which may have shallow channelized basins of post	Alluvial Deposits (Q1a)	Alluvial and Alluvium Deposits (Q1a)	Alluvial and Alluvium Deposits (Q1a)						
Recent deposits (Q1a)	Recent Deposits (Q1a)	Recent Deposits (Q1a)	Recent Deposits (Q1a)						
Unconformable deposits of sand and silt, with clayey matrix, possibly containing discrete thin layers of sand	Alluvial Deposits (Q1b)	Alluvial Deposits (Q1b)	Alluvial Deposits (Q1b)						
Unconformable deposits of sand and silt, with clayey matrix, possibly containing discrete thin layers of sand	Alluvial Deposits (Q1c)	Alluvial Deposits (Q1c)	Alluvial Deposits (Q1c)						
Unconformable deposits of sand and silt, with clayey matrix, possibly containing discrete thin layers of sand	Alluvial Deposits (Q1d)	Alluvial Deposits (Q1d)	Alluvial Deposits (Q1d)						
Unconformable deposits of sand and silt, with clayey matrix, possibly containing discrete thin layers of sand	Alluvial Deposits (Q1e)	Alluvial Deposits (Q1e)	Alluvial Deposits (Q1e)						
Unconformable deposits of sand and silt, with clayey matrix, possibly containing discrete thin layers of sand	Alluvial Deposits (Q1f)	Alluvial Deposits (Q1f)	Alluvial Deposits (Q1f)						
Unconformable deposits of sand and silt, with clayey matrix, possibly containing discrete thin layers of sand	Alluvial Deposits (Q1g)	Alluvial Deposits (Q1g)	Alluvial Deposits (Q1g)						
Unconformable deposits of sand and silt, with clayey matrix, possibly containing discrete thin layers of sand	Alluvial Deposits (Q1h)	Alluvial Deposits (Q1h)	Alluvial Deposits (Q1h)						
Unconformable deposits of sand and silt, with clayey matrix, possibly containing discrete thin layers of sand	Alluvial Deposits (Q1i)	Alluvial Deposits (Q1i)	Alluvial Deposits (Q1i)						
Unconformable deposits of sand and silt, with clayey matrix, possibly containing discrete thin layers of sand	Alluvial Deposits (Q1j)	Alluvial Deposits (Q1j)	Alluvial Deposits (Q1j)						



MINISTRY OF MINES AND ENERGY
Director of Geology and Mineral Resources
Mário José Ramalho
Secretary of Geology, Mining and Mineral Transformation
Alexandre Vidalga
GEOLOGICAL SURVEY OF BRAZIL
President/Director
Elevátes Pedro Colnago

MINISTRY OF MINES AND ENERGY
Director of Geology and Mineral Resources
Mário José Ramalho
Secretary of Geology, Mining and Mineral Transformation
Alexandre Vidalga
GEOLOGICAL SURVEY OF BRAZIL
President/Director
Elevátes Pedro Colnago

GEOLOGICAL AND MINERAL RESOURCES MAP OF AMERICA PROJECT
SCALE 1:1,000,000 (GIS - SOUTH AMERICA, 1:1 M) - SHEET NA.19 - PICO DA NEBLINA

COORDINATION
Brazil's Coordinators: Marcelo Esteves Almeida
Colombia's Coordinators: Jorge Gómez Tapias
Venezuela's Coordinators: Manuel Puelles
Director of Geology and Mineral Resources: José María Barreto Estrada
Secretary of Geology, Mining and Mineral Transformation: Alexandre Vidalga
President/Director: Elevátes Pedro Colnago

Geological Survey of Colombia
President/Director: Manuel Puelles
Secretary of Geology, Mining and Mineral Transformation: Alexandre Vidalga
President/Director: Elevátes Pedro Colnago

GEOLOGICAL SURVEY COLOMBIAN
President/Director: Manuel Puelles
Secretary of Geology, Mining and Mineral Transformation: Alexandre Vidalga
President/Director: Elevátes Pedro Colnago

GEOLOGICAL SURVEY VENEZUELAN
President/Director: Manuel Puelles
Secretary of Geology, Mining and Mineral Transformation: Alexandre Vidalga
President/Director: Elevátes Pedro Colnago

Geological Survey of Venezuela
President/Director: Manuel Puelles
Secretary of Geology, Mining and Mineral Transformation: Alexandre Vidalga
President/Director: Elevátes Pedro Colnago

GEOLOGICAL SURVEY OF BRAZIL
Elevátes Pedro Colnago

GEOLOGICAL SURVEY COLOMBIAN
Oscar Puelles Zapata

GEOLOGICAL SURVEY VENEZUELAN
Manuel Puelles

GEOLOGICAL AND MINERAL RESOURCES MAP OF SOUTH AMERICA
SHEET NA.19

SCALE 1:1,000,000

UNIVERSAL TRANSVERSE MERCATOR PROJECTION
Geodesic System: World Geodetic System 84
Origin latitude: 0° S
Origin longitude: 66° W

2021

Logos: CERN CoSW, planetearth, GEOLOGICAL SURVEY OF BRAZIL - CPRM, SERVICIO GEOLOGICO COLOMBIANO, ASGMI, ONE

Flags: Colombia, Brazil, Venezuela